



TAYSK ViSiON

PREMIUM RAILING SOLUTIONS

INNOVATIVE GLASS RAILING SYSTEMS

"TAYSK VISION" LTD - Hauptniederlassung, Bulgarien
"RONI VISION" - Zweitniederlassung, Deutschland

+49 911 3 6666 299

+359 888 550 559

www.tayskvision.com

+49 157 378 264 26

info@tayskvision.com



TAYSK ViSiON
PREMIUM RAILING SOLUTIONS

PRODUCT
CATALOGUE

2024



INNOVATIVE GLASS RAILING SYSTEMS

WWW.TAYSKVISION.COM



TAYSK Vision

PREMIUM RAILING SOLUTIONS

PREMIUM GLASS RAILING SYSTEMS

Taysk Vision Ltd. is a European glass railing systems manufacturer based in Bulgaria. In 2007 the company was established with the goal to present the market with innovative, easy-to-install, and high-quality glass railing systems. Today, we continue to follow our core goals and provide our customers and partners with high-end products.

Thanks to our dedication and huge investments in production, research, development, and certifications, we were able to secure our place among the best glass railing manufacturers in Europe. We offer our customers a complete product from the railing system to accessories and glass for railings. With our team of in-house engineers and the extensive experience we have in the field of glass railing design and installation, we can offer custom solutions.

The raw materials we use are from reputable and respected suppliers which guarantees the quality of our finished products. The technology behind our adjustable glass railing systems is innovative and surpasses by far the competitor's options. Our "Vision" series offer eye-catching aesthetics and high safety standards. We pride ourselves on being able to deliver the perfect balance of quality, innovation, and price.

WWW.TAYSKVISION.COM



TV 9900

TV 9900S

TV 9900L

TV 9900Y

TV 8900

TV 8900S

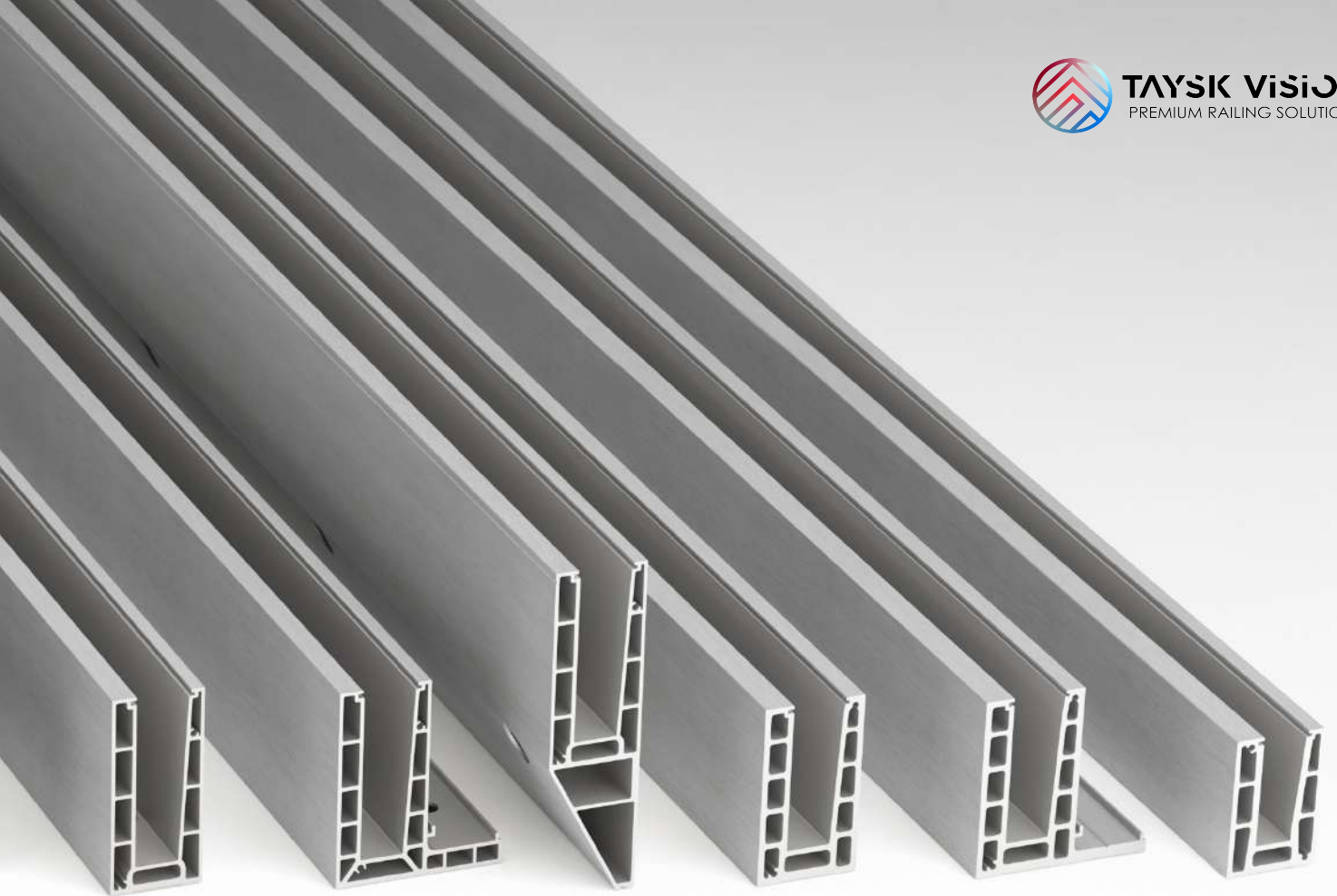
CONTENT MENU :

10

40

70

12	- base mount	42	- base mount	72	- base mount
16	- side mount	46	- side mount	74	- side mount
20	- base mount	50	- base mount	76	- side mount
24	- side mount	56	- base mount	78	- side mount
30	- base mount	60	- base mount		
34	- side mount	66	- base mount		



TV 7600

TV 7600L

TV 7600Y

TV 6500

TV 6500L

TV 4500

80

85

86

81

- square handrail

85

86

82

- round handrail

83

- slim handrail



TAYSK ViSiON
PREMIUM RAILING SOLUTIONS



FINISHES

Qualanod Anodising

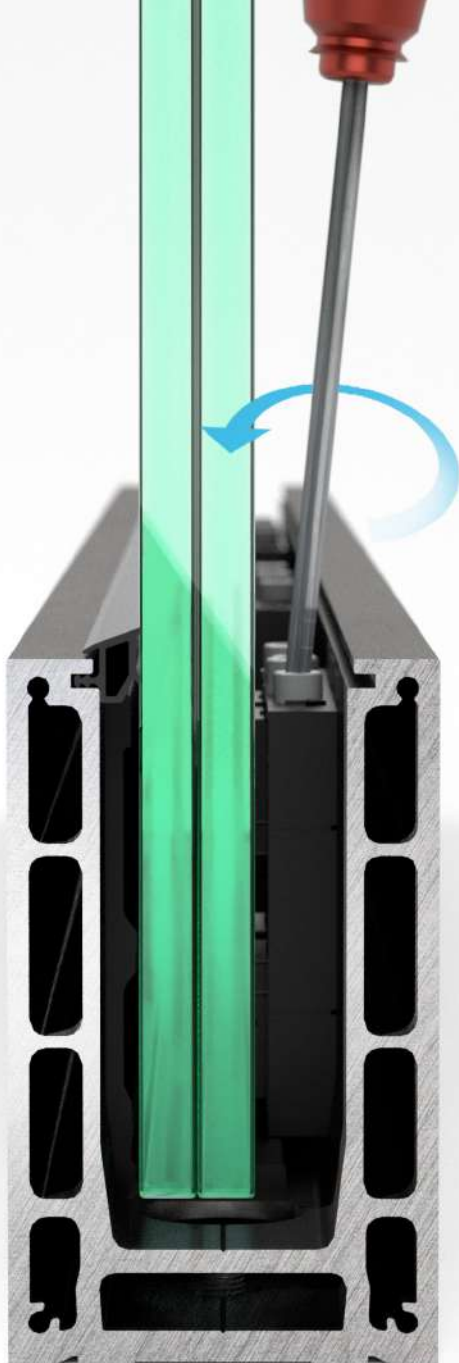
standard 20+ microns
for all systems.



CUSTOM RAL

Wide colour selection available for all systems.





ADJUSTABLE SYSTEMS

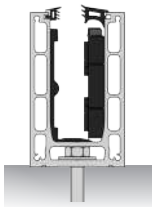
Compatible with:

InstAlign
Technology

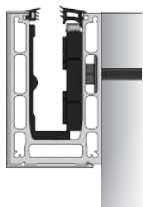
InstAlign+
Technology

Series : TV9900/TV8900

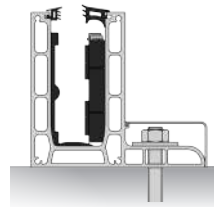
TV9900



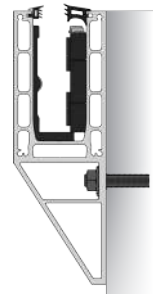
TV9900S



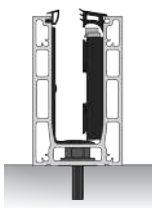
TV9900L



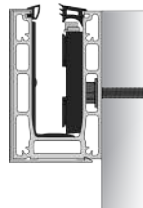
TV9900Y

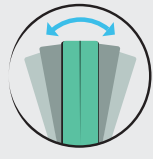
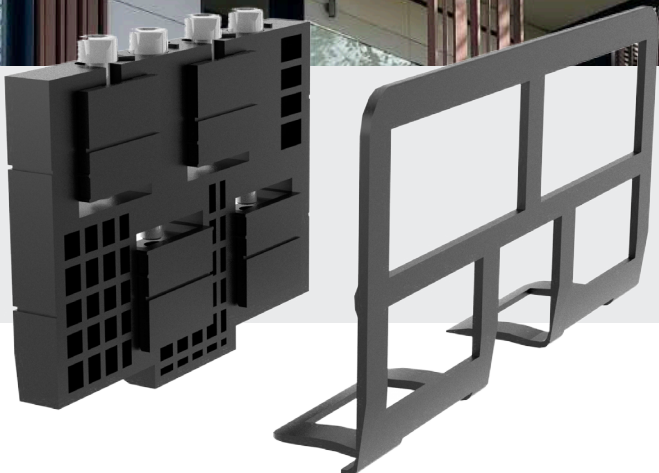


TV8900



TV8900S

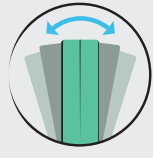




InstAlign+

Technology

InstAlign+ is our very well-known adjustable system, designed by Taysk from a special blend of plastic with twice the recommended UV protection. Allows precise glass alignment in seconds and unrivaled strength.



InstAlign

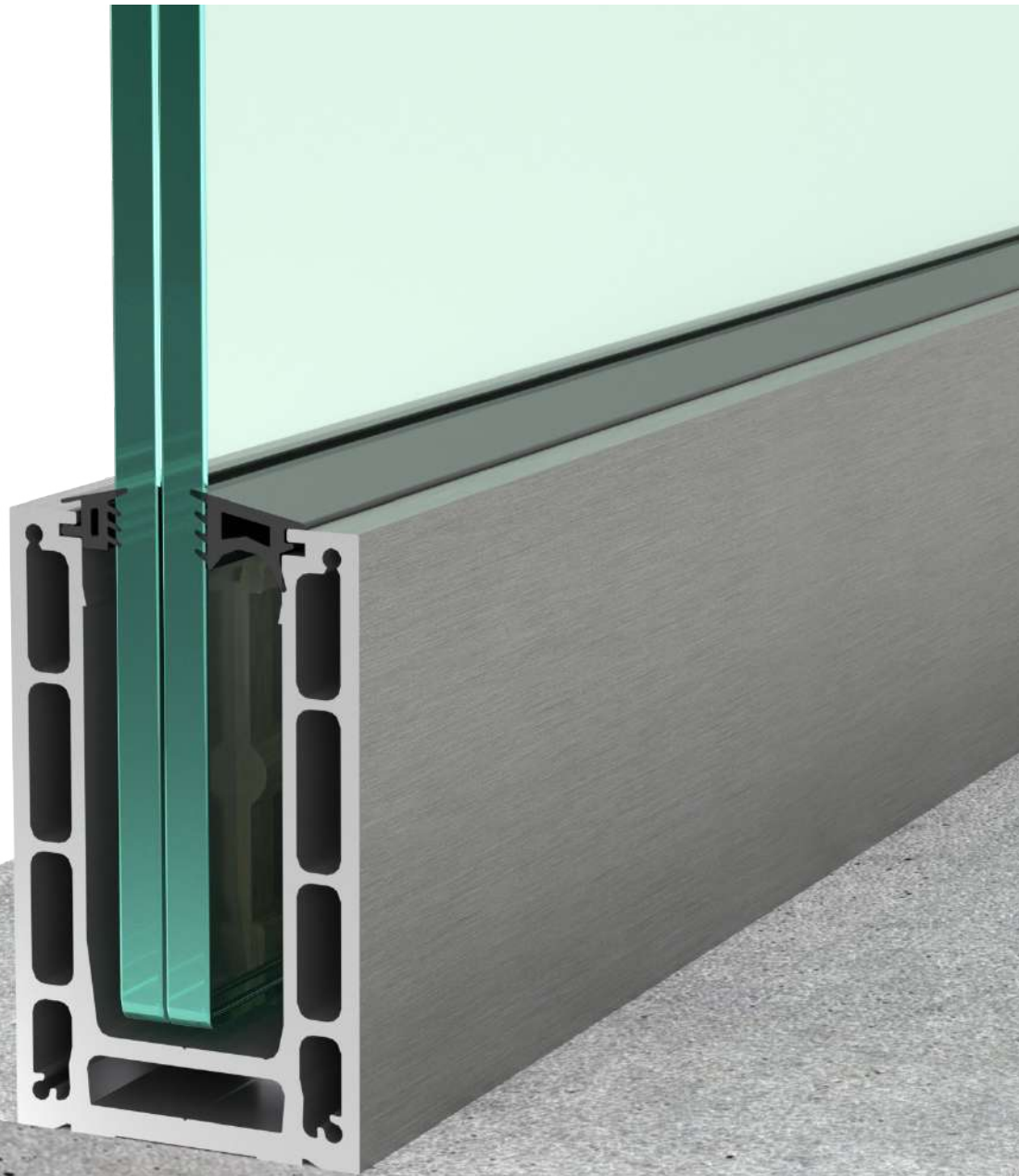
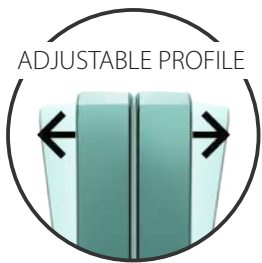
Technology



InstAlign is our newest adjustable system, it features improvements and optimization over the original. Installation is up to 40% faster, it is more simplified and intuitive, it uses the same high-quality durable materials.

TV 9900

BASE MOUNT



KEY FEATURES



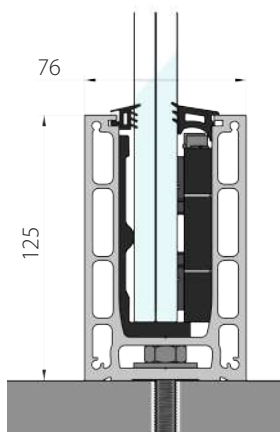
Adjustable profile
up to 4 kN
16.76-25,52 mm glass.



Precise alignment from
the inside of the profile.
Top and underfloor mount



5m channel
4 Anchors per meter



Length: 5000mm
Height: 125mm
Width: 76mm

Channel: 6.93 kg / meter
Total: 8.07 kg / meter

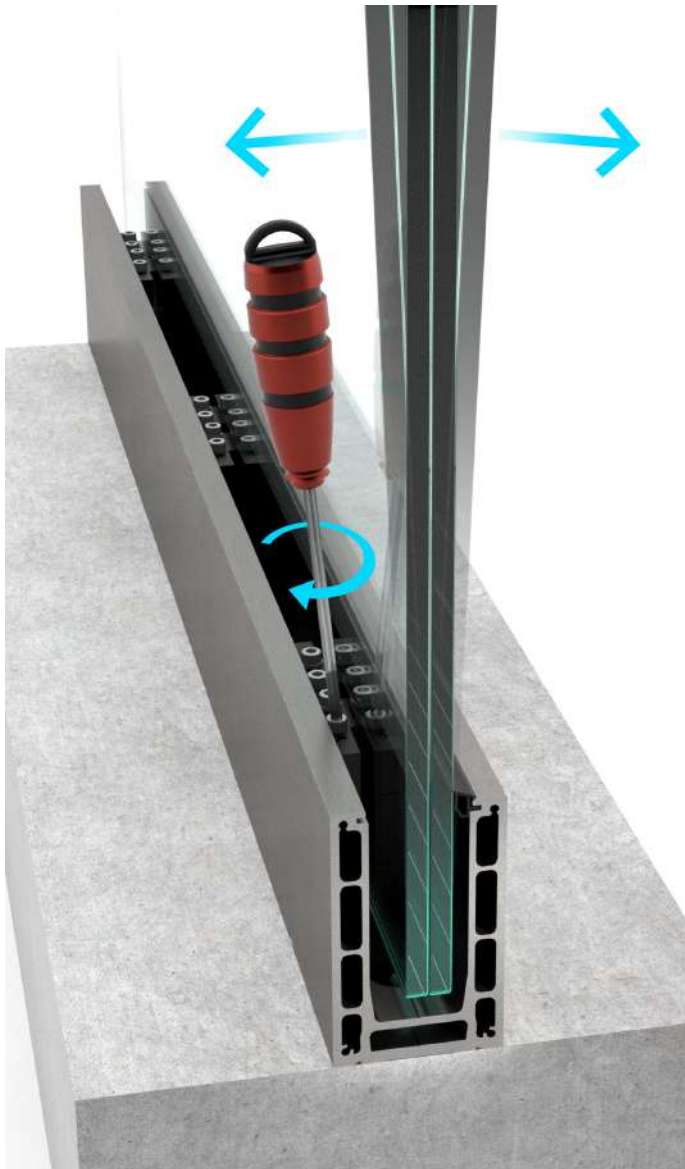
Aluminium: EN AW6060
Color: Inox, Natural, Raw,
Custom colour

Mounting anchors:
M10 / Concrete screw

Glass thickness:
8.8.2 / 8.8.4
10.10.2 / 10.10.4
12.12.2 / 10.10.4

Strength:
8.8 – up to 3 kN
10.10 – up to 4 kN

Maximum height:
8.8 – up to 1300 mm
10.10 – up to 1500 mm



TV9900 – is our innovative and most technically advanced glass railing. With over 15 months of development and prototyping, we were able to deliver ease of installation to a whole new level. Precise alignment of the glass is made from the safety of the inside of the balcony with just a hexagon M5 key, all done in seconds with an electric screwdriver. Its strength of up to 4kN using standard tempered laminated glass makes this system among the most desirable solutions on the Market.

Durability is a key priority not only for us but also for our customers. This is why we made the internal moving parts from Inox and we also use a special patented blend of plastic with twice the recommended UV protection. Rubber seals are made from the most durable EPDM and have the highest UV protection. TV9900 is a system that will withstand anything it's subject to like: Wind, Rain, Salt, and UV rays.

TV9900 successfully covered certification for residential, domestic, and industrial together with heavy human traffic applications. It is proven that the glass railing system is suitable for any usage.

Compatible with:

InstAlign+
Technology



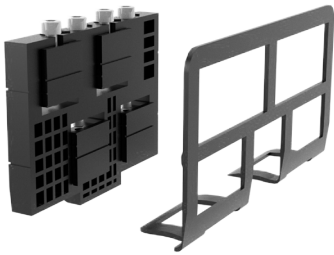
Full certification available on our website www.tayskvision.com/en/

FINISH OPTIONS :

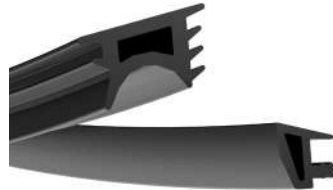


To produce the TV9900 we use the highest quality series of aluminium EN AW 6063, it is well known for its extreme strength and elastic resistance designed to work with 16.76-25.52mm glass.

 **Components**



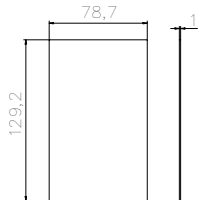
InstAlign+
Adjustable kits for
glass alignment
IAP16 8+8
IAP20 10+10
IAP24 12+12



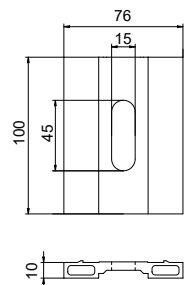
EPDM RUBBER SEAL
RG-9F Universal
RG-9C 8 + 8
RG-9B 10 + 10
RG-9A 12 + 12



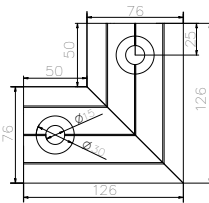
END COVER
Anodized aluminium
Code: TV9900K



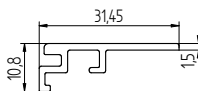
DRAINAGE PLATE
Anodized aluminium
Code: TV9900DP



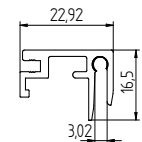
TV9900 Corner 90°
Anodized aluminium.
Code: TC9901



TRIM
Anodized aluminium
Code: TV9900I



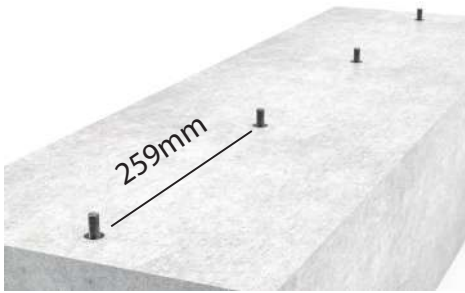
TRIM
Anodized aluminium
Code: TV9900X3



SCREW DRIVER BIT
M5 hexagon ball end
150mm bit
Code: TVM5



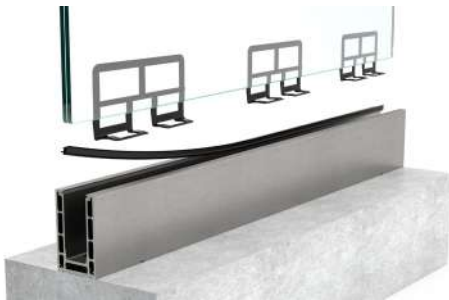
CONNECTOR PINS
Code: TV4



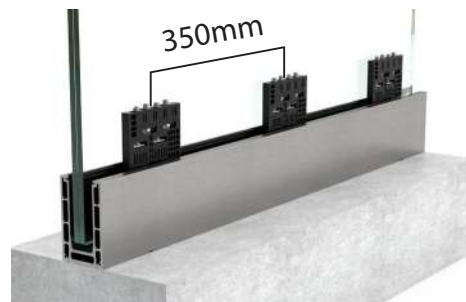
1. Drill, vacuum, insert glue and chemical anchor.



2. Place the profile and secure using a ratchet spanner.



3. Place back rubber seal and back plastic insert and laminated glass.



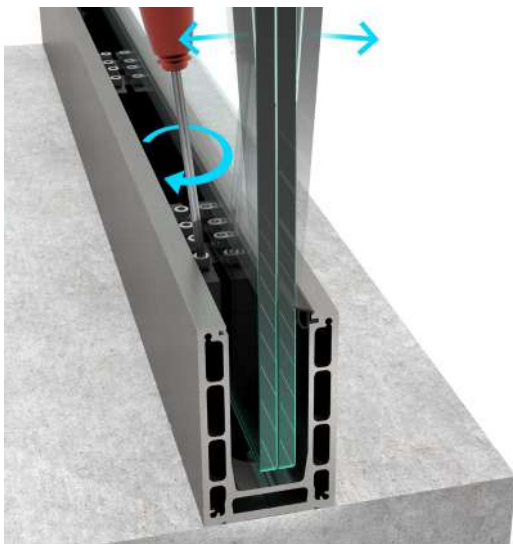
4. Insert the adjustable system and align the glass as shown in the bigger picture below.



5. Place front rubber, front and end covers.



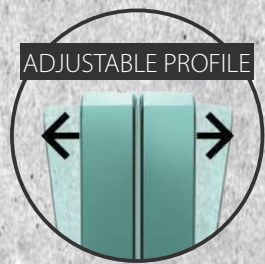
6. Finished look.



Achieving a perfect glass alignment is easy. The two screws without a washer tilt the glass towards you, and the two with a washer tilt it in the opposite direction. When perfect alignment is achieved - tighten all other screws.

TV 9900S

SIDE MOUNT



KEY FEATURES



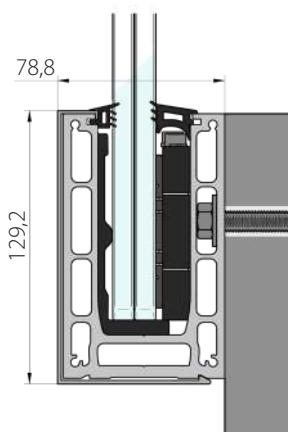
Adjustable profile
up to 4 kN
16.76-25,52 mm glass.



Precise alignment from the
inside of the profile. Side
mount



5m channel, cover 9901S
4 Anchors per meter



Length: 5000mm
Height: 129,2mm
Width: 78,8mm

Channel: 6.93 kg / meter
Total: 9.08 kg / meter

Aluminium: EN AW6060
Color: Inox, Natural, Raw,
Custom colour

Mounting anchors:
M10 / Concrete screw

Glass thickness:
8.8.2 / 8.8.4
10.10.2 / 10.10.4
12.12.2 / 12.12.4

Strength:
8.8 – up to 3 kN
10.10 – up to 4 kN

Maximum height:
8.8 – up to 1200 mm
10.10 – up to 1400 mm



TV9900S – is our innovative and most technically advanced glass railing for side mount. With over 15 months of development and prototyping, we were able to deliver ease of installation to a whole new level. Precise alignment of the glass is made from the safety of the inside of the balcony with just a hexagon M5 key, all done in seconds with an electric screwdriver. Its strength of up to 4kN using standard tempered laminated glass makes this system among the most desirable solutions on the Market.

Durability is a key priority not only for us but also for our customers. This is why we made the internal moving parts from Inox and we also use a special patented blend of plastic with twice the recommended UV protection. Rubber seals are made from the most durable EPDM and have the highest UV protection. TV9900S is a system that will withstand anything it's subject to like: Wind, Rain, Salt, and UV rays.

TV9900S successfully covered certification for residential, domestic, and industrial together with heavy human traffic applications. It is proven that the glass railing system is suitable for any usage.

Compatible with:

InstAlign+
Technology



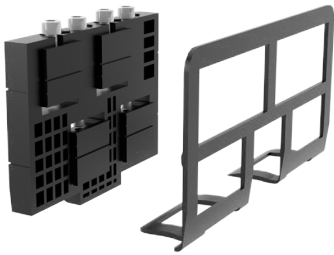
Full certification available on our website
www.tayskvision.com/en/

FINISH OPTIONS:

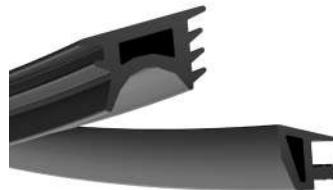


To produce the TV9900S we use the highest quality series of aluminium EN AW 6063, it is well known for its extreme strength and elastic resistance designed to work with 16.76-25.52mm glass.

 **Components**



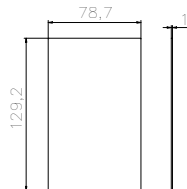
InstAlign+
Adjustable kits for
glass alignment
IAP16 8+8
IAP20 10+10
IAP24 12+12



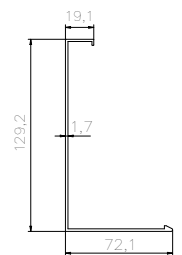
EPDM RUBBER SEAL
RG-9F Universal
RG-9C 8 + 8
RG-9B 10 + 10
RG-9A 12 + 12



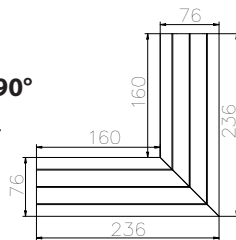
END COVER
Anodized aluminium
Code: TV9901SK



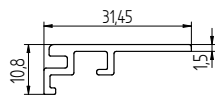
SIDE COVER
Anodized aluminium
Code: TV9901S



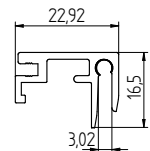
TV9900S Corner 90°
Anodized aluminium.
Code: TC9901S



TRIM
Anodized aluminium
Code: TV9900I



TRIM
Anodized aluminium
Code: TV9900X3



SCREW DRIVER BIT
M5 hexagon ball end
150mm bit
Code: TVM5



CONNECTOR PINS
Code: TV4



1. Drill, vacuum, insert glue and chemical anchor.



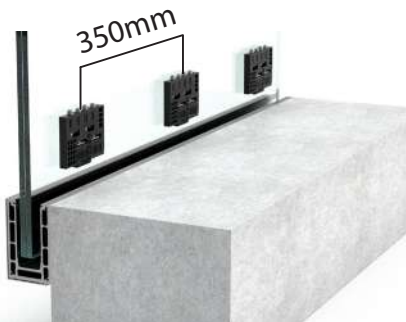
2. Place the profile and secure using a ratchet spanner.



3. Place out-facing lid and rubber seal.



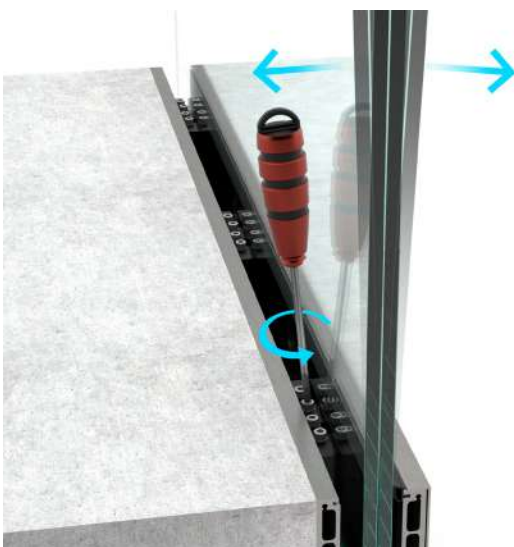
4. Place outer plastic inserts and laminated glass.



5. Insert the adjustable system and align the glass as shown in the bigger picture below.



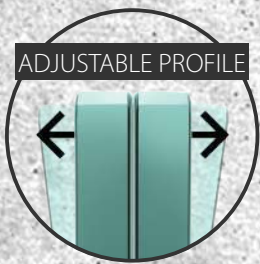
6. Finished look.



Achieving a perfect glass alignment is easy. The two screws without a washer tilt the glass towards you, and the two with a washer tilt it in the opposite direction. When perfect alignment is achieved - tighten all other screws.

TV9900Y

SIDE MOUNT



KEY FEATURES



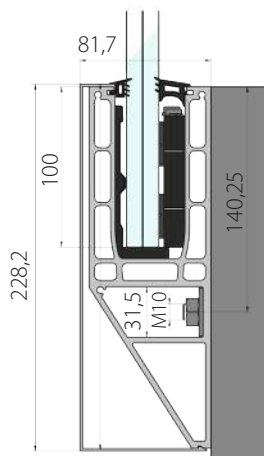
Adjustable profile
up to 4 kN
16.76-25.52 mm glass.



Precise alignment from the
inside of the profile. Side
mount



5m channel, cover 9901Y
4 Anchors per meter



Length: 5000mm
Height: 228,2mm
Width: 81,7mm

Channel: 8.9 kg / meter
Total: 11.82 kg / meter

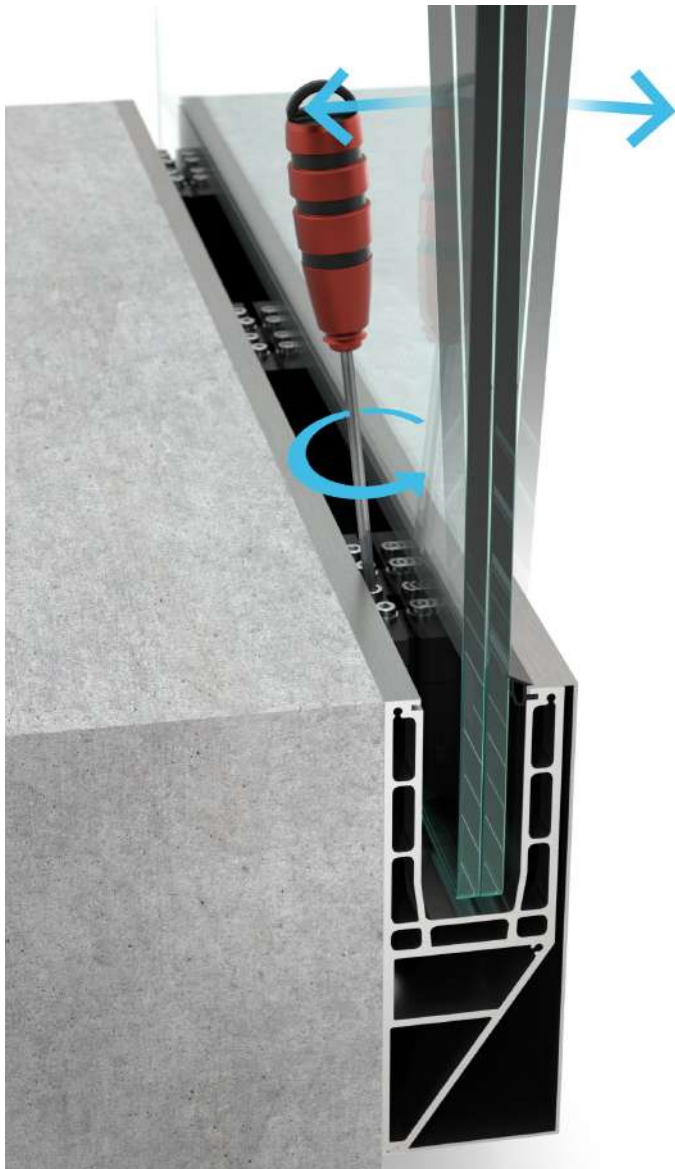
Aluminium: EN AW6063
Color: Inox, Natural, Raw,
Custom colour

Mounting anchors:
M10 / Concrete screw

Glass thickness:
8.8.2 / 8.8.4
10.10.2 / 10.10.4
12.12.2 / 12.12.4

Strength:
8.8 – up to 3 kN
10.10 – up to 4 kN

Maximum height:
8.8 – up to 1200 mm
10.10 – up to 1300 mm



TV9900Y – is our adjustable system based on TV9900 which offers an extended side mount. With its Y-shape it allows installation on the edge of the concrete at floor level. Precise alignment of the glass is made from the safety of the inside of the balcony with just a hexagon M5 key, all done in seconds with an electric screwdriver. Its strength of up to 4kN using standard tempered laminated glass makes this system among the most desirable solutions on the Market.

Durability is a key priority not only for us but also for our customers. This is why we made the internal moving parts from Inox and we also use a special patented blend of plastic with twice the recommended UV protection. Rubber seals are made from the most durable EPDM and have the highest UV protection. TV9900Y is a system that will withstand anything it's subject to like: Wind, Rain, Salt, and UV rays.

TV9900Y successfully covered certification for residential, domestic, and industrial together with heavy human traffic applications. It is proven that the glass railing system is suitable for any usage.

Compatible with:

InstAlign+
Technology



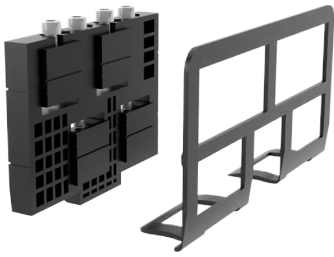
Full certification available on our website
www.tayskvision.com/en/

FINISH OPTIONS:

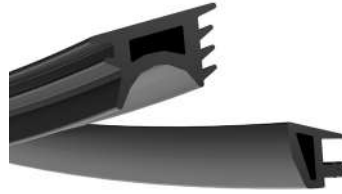


To produce the TV9900Y we use the highest quality series of aluminium EN AW 6063, it is well known for its extreme strength and elastic resistance designed to work with 16.76-25.52mm glass.

 **Components**



InstAlign+
Adjustable kits for
glass alignment
IAP16 8+8
IAP20 10+10
IAP24 12+12

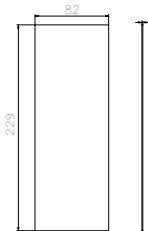


EPDM RUBBER SEAL

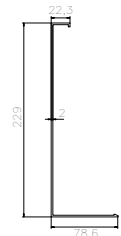
RG-9F Universal
RG-9C 8 + 8
RG-9B 10 + 10
RG-9A 12 + 12



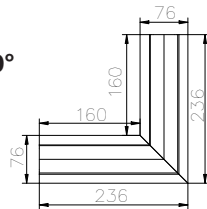
END COVER
Anodized aluminium
Code: TV9901YK



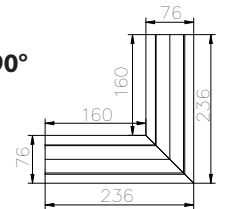
SIDE COVER
Anodized aluminium
Code: TV9901Y



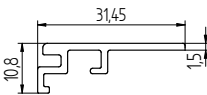
TV9900Y Corner 90°
Anodized aluminium.
Code: TC9901Y



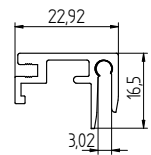
TV9900Y Corner 90°
Anodized aluminium.
Code: TC9902Y



TRIM
Anodized aluminium
Code: TV9900I



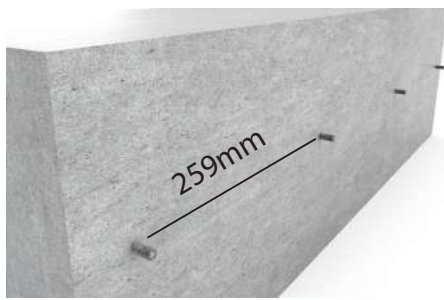
TRIM
Anodized aluminium
Code: TV9900X3



SCREW DRIVER BIT
M5 hexagon ball end
150mm bit
Code: TVM5



CONNECTOR PINS
Code: TV4



1. Drill, vacuum, insert glue and chemical anchor.



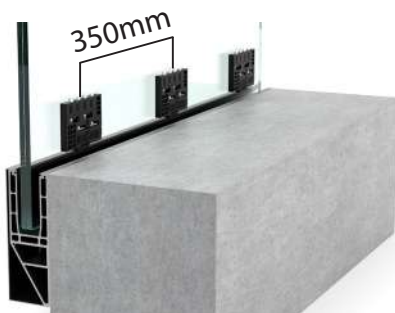
2. Place the profile and secure using a ratchet spanner



3. Place out-facing lid and rubber seal.



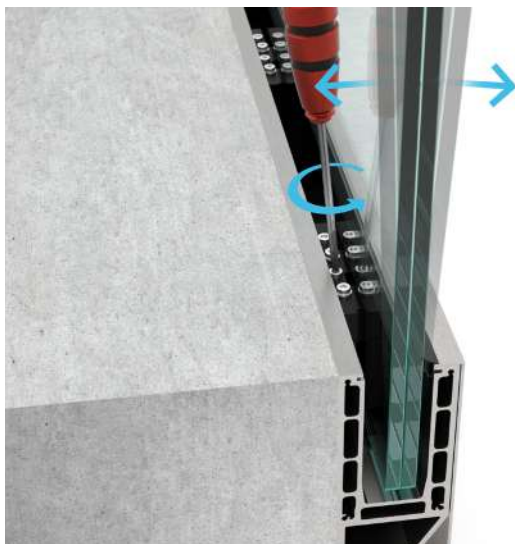
4. Place outer plastic inserts and laminated glass.



5. Insert the adjustable system and align the glass as shown in the bigger picture below.



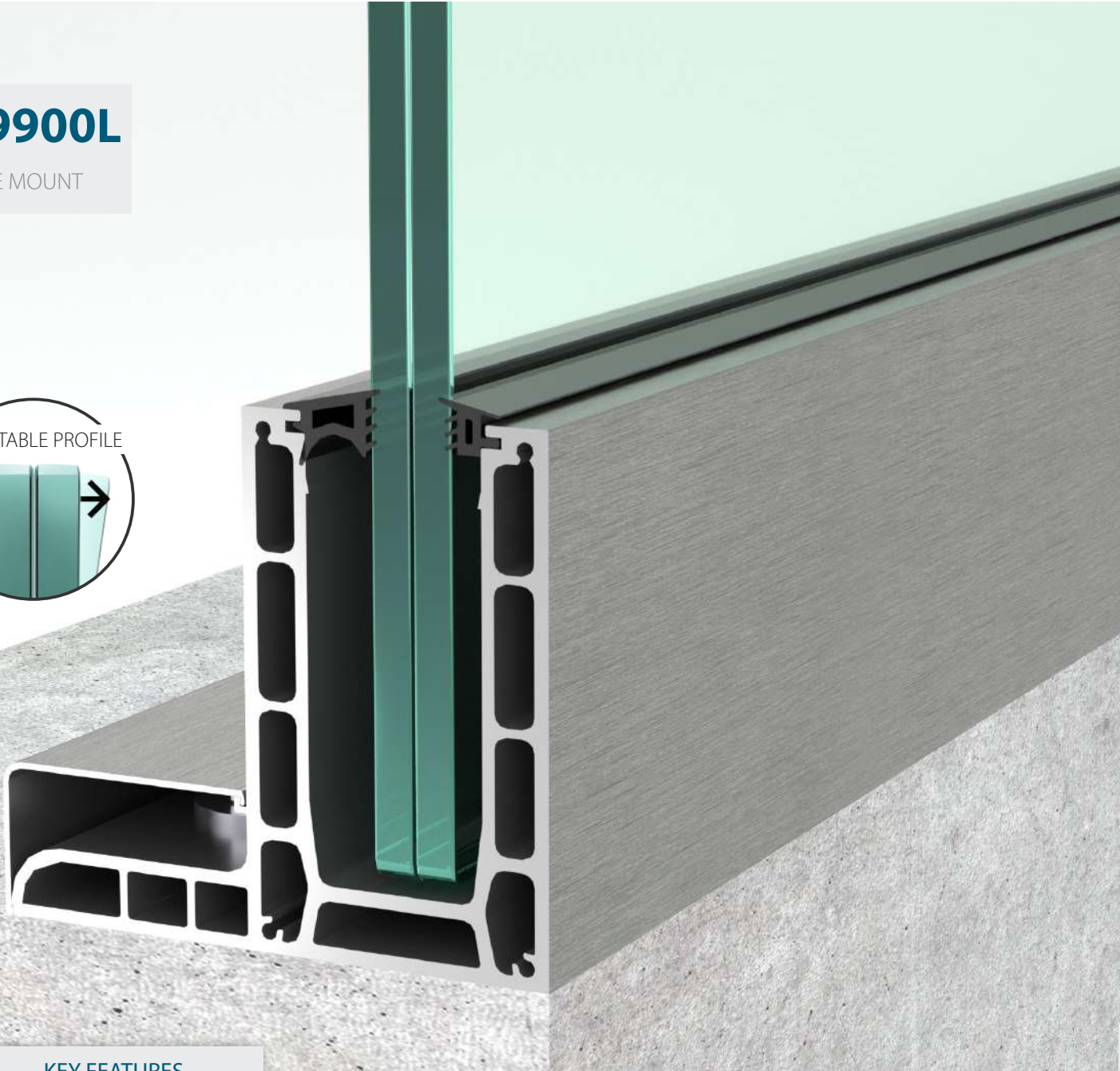
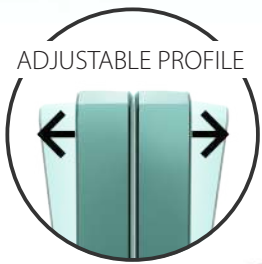
6. Finished look.



Achieving a perfect glass alignment is easy. The two screws without a washer tilt the glass towards you, and the two with a washer tilt it in the opposite direction. When perfect alignment is achieved - tighten all other screws.

TV9900L

BASE MOUNT



KEY FEATURES



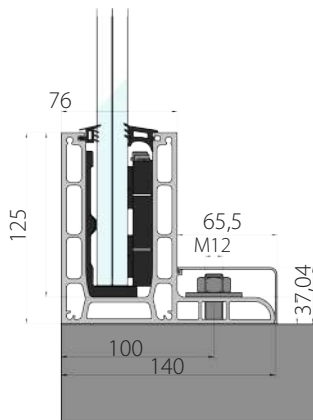
Adjustable profile
up to 4 kN
16.76-25,52 mm glass.



Precise alignment from the
inside of the profile.
Top and underfloor mount



5m channel, cover 9901L
4 Anchors per meter



Length: 5000mm
Height: 125mm
Width: 140mm

Channel: 7,47 kg / meter
Total: 9.02 kg / meter

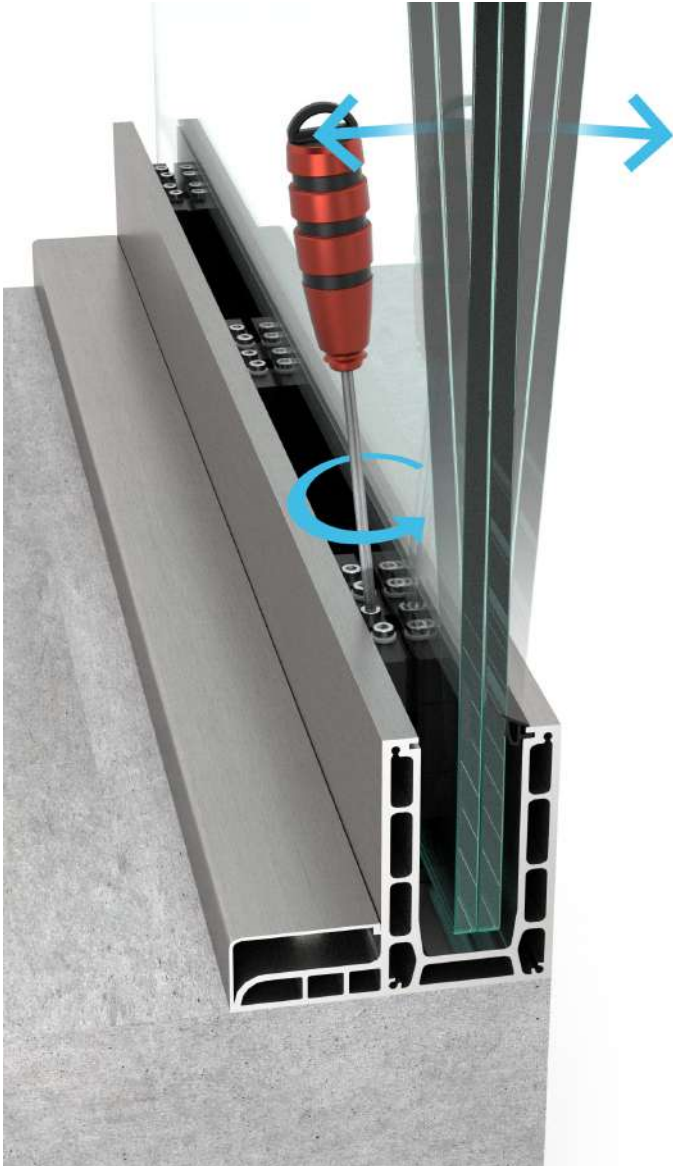
Aluminium: EN AW6060
Color: Inox, Natural, Raw,
Custom colour

Mounting anchors:
M10 / Concrete screw

Glass thickness:
8.8.2 / 8.8.4
10.10.2 / 10.10.4
12.12.2 / 12.12.4

Strength:
8.8 – up to 3 kN
10.10 – up to 4 kN

Maximum height:
8.8 – up to 1200 mm
10.10 – up to 1300 mm



TV9900L – is our adjustable system based on TV9900 which offers great flexibility and usage. With its L-shape it allows installation on the edge of the concrete. The system can be integrated into the floor. TV9900L can also be used as a glass awning. Precise alignment of the glass is made from the safety of the inside of the balcony with just a hexagon M5 key, all done in seconds with an electric screwdriver. Its strength of up to 4kN using standard tempered laminated glass makes this system among the most desirable solutions on the Market.

Durability is a key priority not only for us but also for our customers. This is why we made the internal moving parts from Inox and we also use a special patented blend of plastic with twice the recommended UV protection. Rubber seals are made from the most durable EPDM and have the highest UV protection. TV9900L is a system that will withstand anything it's subject to like: Wind, Rain, Salt, and UV rays.

TV9900L successfully covered certification for residential, domestic, and industrial together with heavy human traffic applications. It is proven that the glass railing system is suitable for any usage.

Compatible with:

InstAlign+
Technology



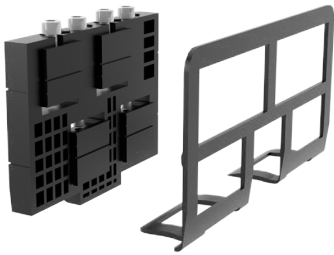
Full certification available on our website
www.tayskvision.com/en/

FINISH OPTIONS:

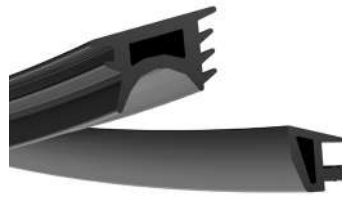


To produce the TV9900L we use the highest quality series of aluminium EN AW 6063, it is well known for its extreme strength and elastic resistance designed to work with 16.76-25.52mm glass.

Components



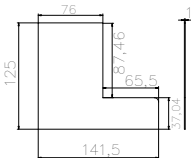
InstAlign+
Adjustable kits for
glass alignment
IAP16 8+8
IAP20 10+10
IAP24 12+12



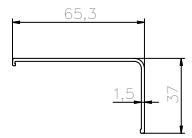
EPDM RUBBER SEAL
RG-9F Universal
RG-9C 8 + 8
RG-9B 10 + 10
RG-9A 12 + 12



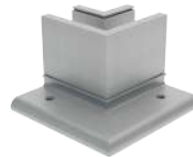
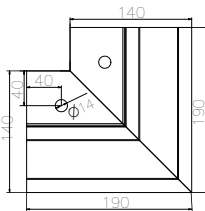
END COVER
Anodized aluminium
Code: TV9901LK



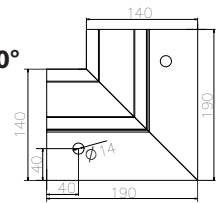
SIDE COVER
Anodized aluminium
Code: TV9901L



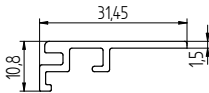
TV9900L Corner 90°
Anodized aluminium.
Code: TC9901L



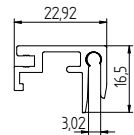
TV9900L Corner 90°
Anodized aluminium.
Code: TC9902L



TRIM
Anodized aluminium
Code: TV9900I



TRIM
Anodized aluminium
Code: TV9900X3



SCREW DRIVER BIT
M5 hexagon ball end
150mm bit
Code: TVM5



CONNECTOR PINS
Code: TV4



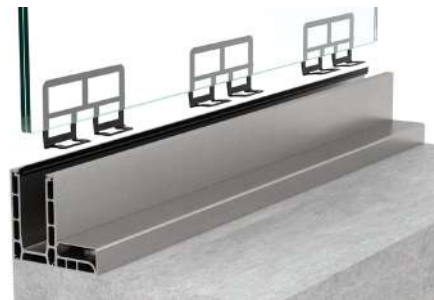
1. Drill, vacuum, insert glue and chemical anchor.



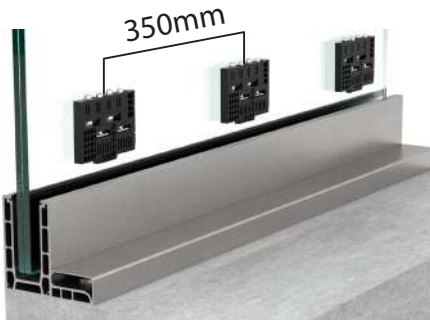
2. Place the profile and secure using a ratchet spanner.



3. Place out-facing lid and rubber seal.



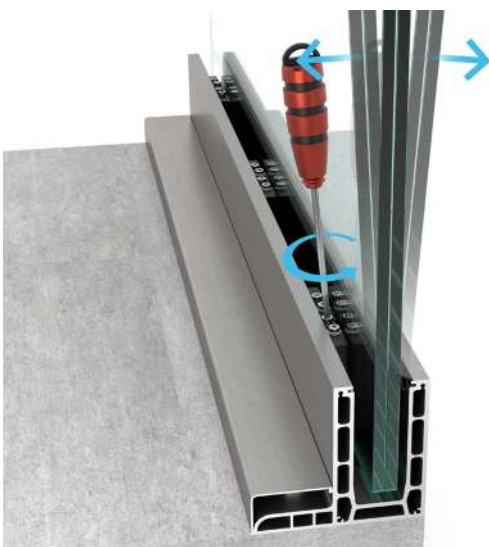
4. Place outer plastic inserts and laminated glass.



5. Insert the adjustable system and align the glass as shown in the bigger picture below.



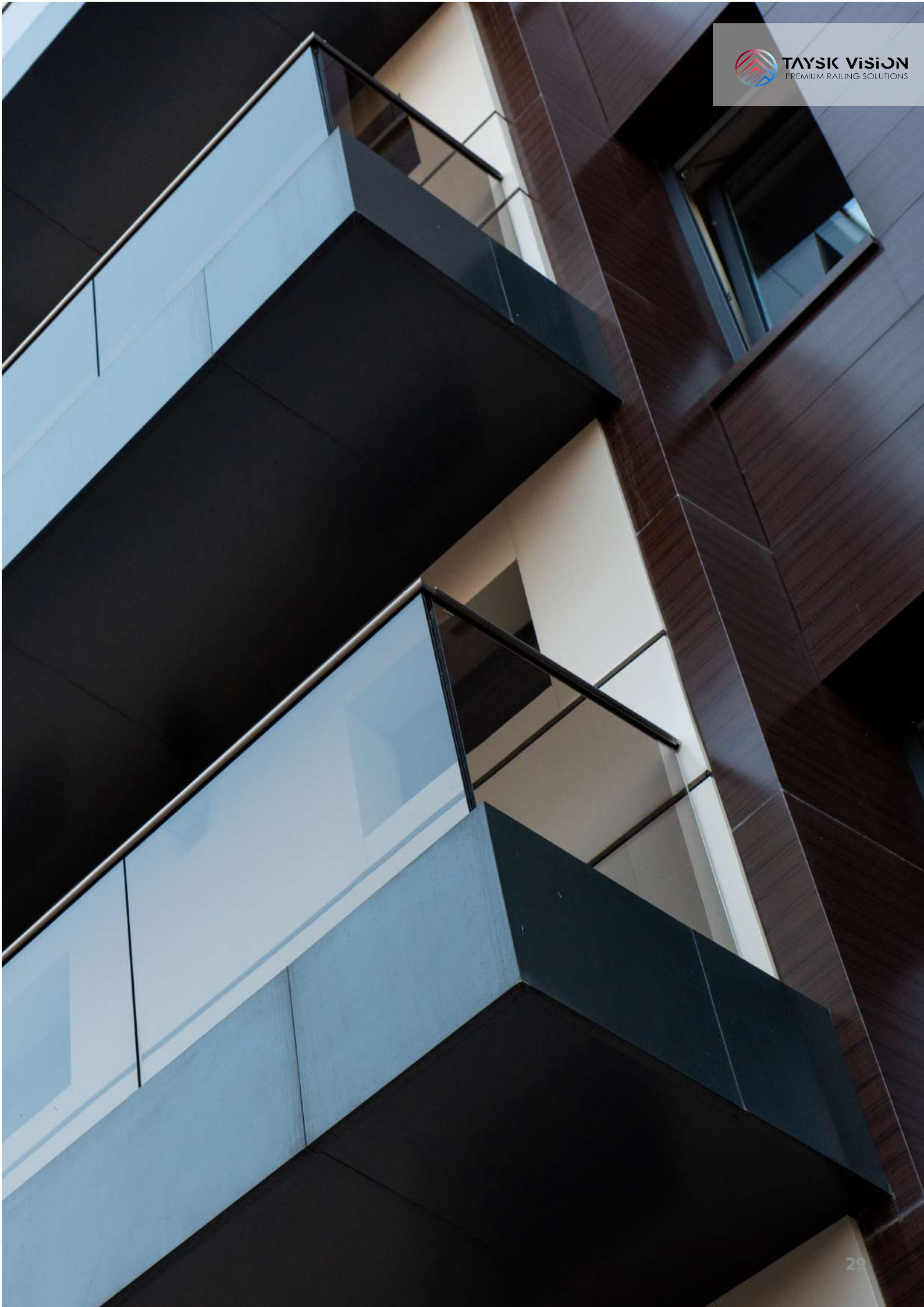
6. Finished look.



Achieving a perfect glass alignment is easy. The two screws without a washer tilt the glass towards you, and the two with a washer tilt it in the opposite direction. When perfect alignment is achieved - tighten all other screws.



TV 9900



TV 8900

BASE MOUNT



KEY FEATURES



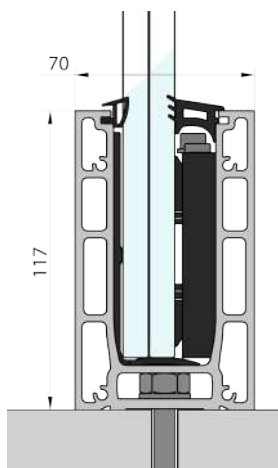
Adjustable profile
up to 3 kN
12.76-21,52 mm glass.



Precise alignment from the
inside of the profile.
Top and underfloor mount.



5m channel
4 Anchors per meter



Length: 5000mm
Height: 117mm
Width: 70mm

Channel: 5.47 kg / meter
Total: 6.41 kg / meter

Aluminium: EN AW6060
Color: Inox, Natural, Raw,
Custom colour

Mounting anchors:
M10 / Concrete screw

Glass thickness:
6.62 / 6.62
8.82 / 8.84
10.10.2 / 10.10.4

Strength:
8.8 – up to 3 kN
10.10 – up to 3 kN

Maximum height:
8.8 – up to 1200 mm
10.10 – up to 1300 mm



TV8900 – is our innovative and most technically advanced glass railing. With over 15 months of development and prototyping, we were able to deliver ease of installation to a whole new level. Precise alignment of the glass is made from the safety of the inside of the balcony with just a hexagon M5 key, all done in seconds with an electric screwdriver. Its strength of up to 2kN using standard tempered laminated glass makes this system among the most desirable solutions on the Market.

Durability is a key priority not only for us but also for our customers. This is why we made the internal moving parts from Inox and we also use a special patented blend of plastic with twice the recommended UV protection. Rubber seals are made from the most durable EPDM and have the highest UV protection.

TV8900 is a system that will withstand anything it's subject to like: Wind, Rain, Salt, and UV rays.

TV8900 successfully covered certification for residential, domestic, and industrial together with heavy human traffic applications. It is proven that the glass railing system is suitable for any usage.

Compatible with:

InstAlign
Technology



Full certification available on our website
www.tayskvision.com/en/

ASSEMBLED / DISASSEMBLED



To produce the TV8900 we use the highest quality series of aluminium EN AW 6063, it is well known for its extreme strength and elastic resistance designed to work with 12.76-21.52mm glass.



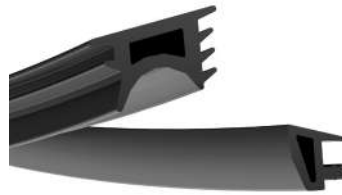
Components



InstAlign

Adjustable kits for glass alignment

- IA12** 6 + 6
- IA16** 8 + 8
- IA20** 10 + 10



EPDM RUBBER SEAL

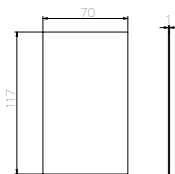
- RG-9F** Universal
- RG-9C** 6 + 6
- RG-9B** 8 + 8
- RG-9A** 10 + 10



END COVER

Anodized aluminium

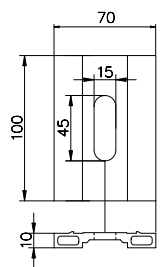
Code: TV8901K



DRAINAGE PLATE

Anodized aluminium

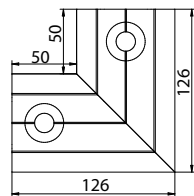
Code: TV8900DP



TV8900 Corner 90°

Anodized aluminium.

Code: TC8901



SCREW DRIVER BIT

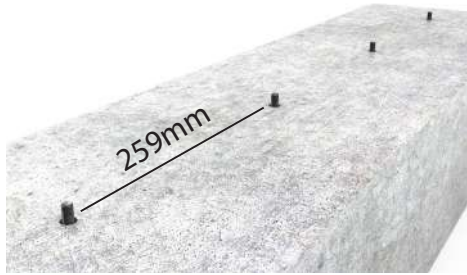
M5 hexagon ball end
150mm bit

Code: TVM5



CONNECTOR PINS

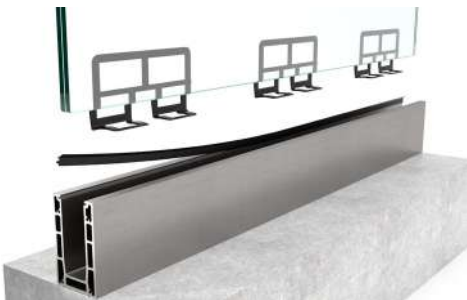
Code: TV4



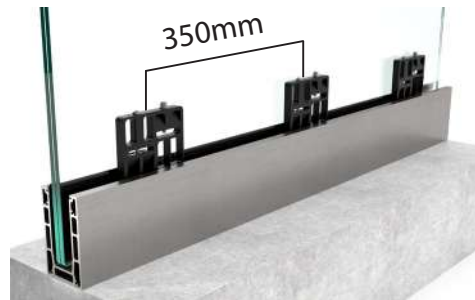
1. Drill, vacuum, insert glue and chemical anchor.



2. Place the profile and secure using a ratchet spanner.



3. Place back rubber seal, back plastic insert and laminated glass.



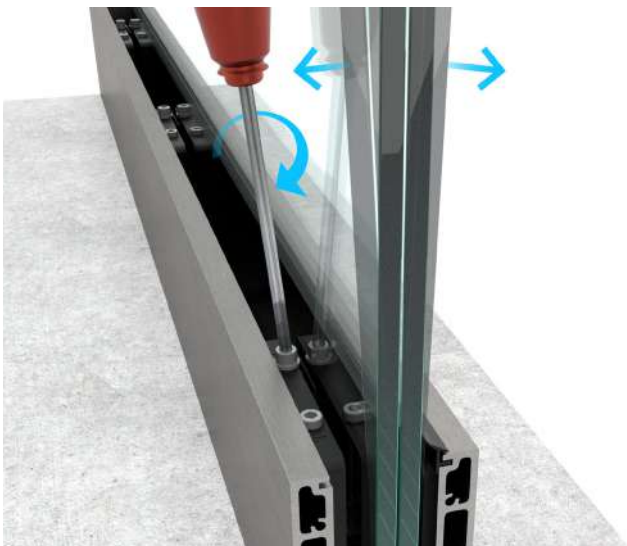
4. Insert the adjustable system and align the glass as shown in the bigger picture below.



5. Place front rubber seal and front and end covers.



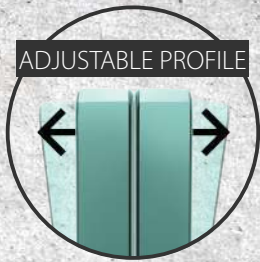
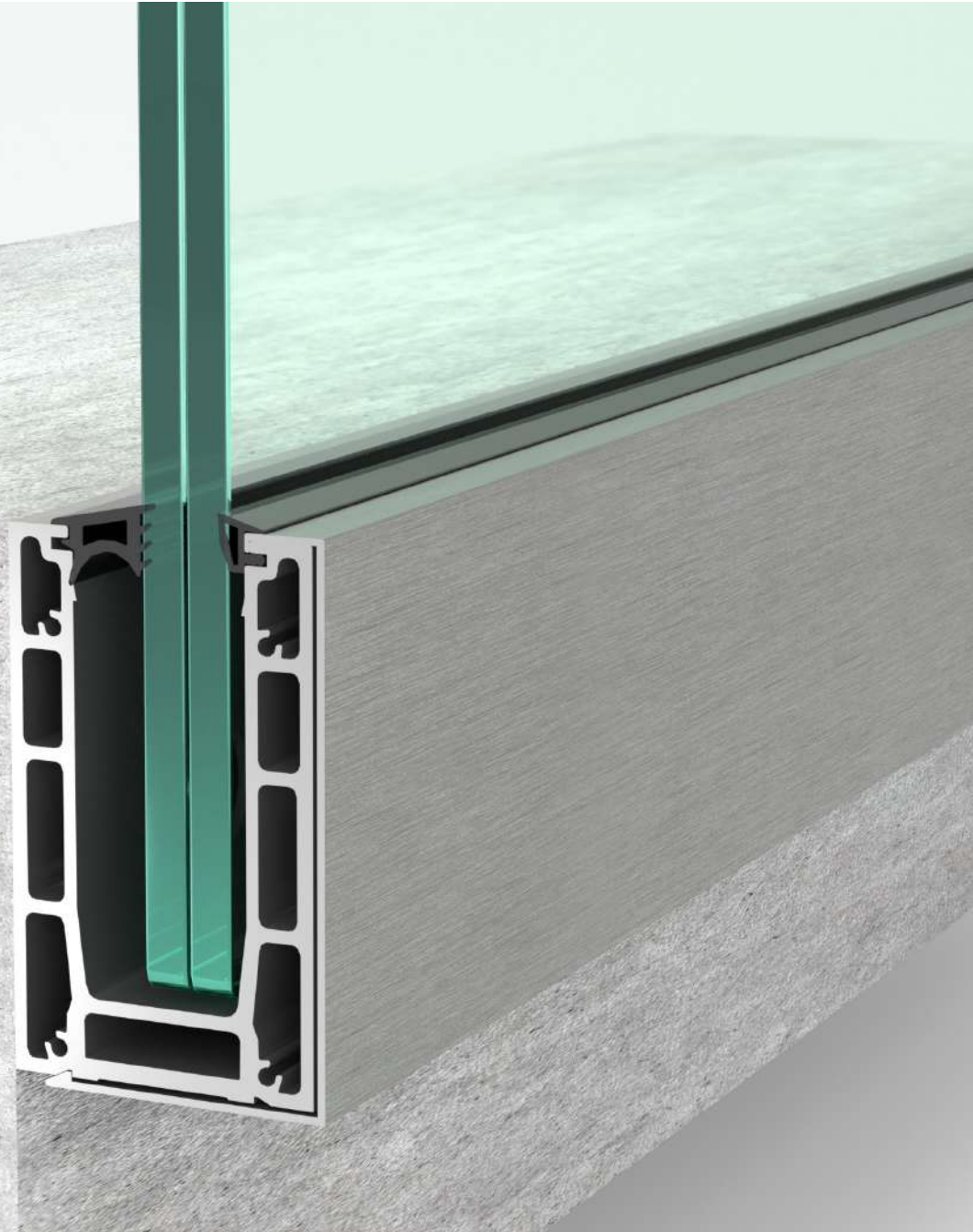
6. Finished look.



To achieve perfect alignment use the two screws. First one tilts the glass towards you, the second opposite direction. When perfect alignment is achieved secure both screws.

TV 8900S

SIDE MOUNT



KEY FEATURES



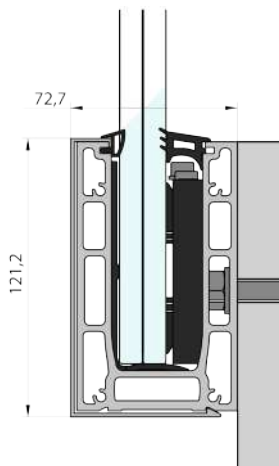
Adjustable profile
up to 3 kN
12.76-21.52 mm glass.



Precise alignment from the
inside of the profile. Side
mount



5m channel, cover 8901S
4 Anchors per meter



Length: 5000mm
Height: 121,5mm
Width: 72,7mm

Channel: 5.47 kg / meter
Total: 7.35 / meter

Aluminium: EN AW6060
Color: Inox, Natural, Raw,
Custom colour

Mounting anchors:
M10 / Concrete screw

Glass thickness:
6.6.2 / 6.6.4
8.8.2 / 8.8.4
10.10.2 / 10.10.4

Strength:
8.8 – up to 2 kN
10.10 – up to 2 kN

Maximum height:
8.8 – up to 1200 mm
10.10 – up to 1300 mm



TV8900S – is our innovative and most technically advanced glass railing. With over 15 months of development and prototyping, we were able to deliver ease of installation to a whole new level. Precise alignment of the glass is made from the safety of the inside of the balcony with just a hexagon M5 key, all done in seconds with an electric screwdriver. Its strength of up to 2kN using standard tempered laminated glass makes this system among the most desirable solutions on the Market.

Durability is a key priority not only for us but also for our customers. This is why we made the internal moving parts from Inox and we also use a special patented blend of plastic with twice the recommended UV protection. Rubber seals are made from the most durable EPDM and have the highest UV protection. TV8900 is a system that will withstand anything it's subject to like: Wind, Rain, Salt, and UV rays.

TV8900S successfully covered certification for residential, domestic, and industrial together with heavy human traffic applications. It is proven that the glass railing system is suitable for any usage.

Compatible with:

InstAlign
Technology



Full certification available on our website
www.tayskvision.com/en/

ASSEMBLED / DISASSEMBLED



To produce the TV8900S we use the highest quality series of aluminium EN AW 6063, it is well known for its extreme strength and elastic resistance designed to work with 12.76-21.52mm glass.



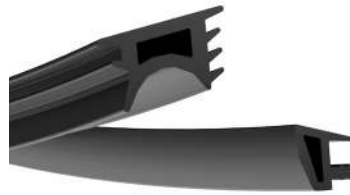
Components



InstAlign

Adjustable kits for glass alignment

- K99-16** 6 + 6
- K99-20** 8 + 8
- K99-24** 10 + 10



EPDM RUBBER SEAL

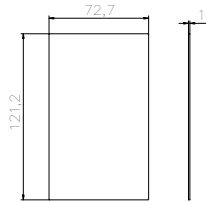
- RG-90F** Universal
- RG-9C** 6 + 6
- RG-9B** 8 + 8
- RG-9A** 10 + 10



END COVER

Anodized aluminium

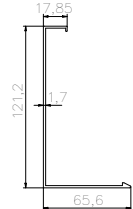
Code: TV8901SK



SIDE COVER

Anodized aluminium

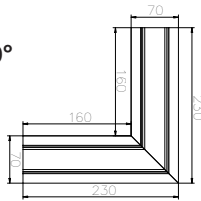
Code: TV8901S



TV8900S Corner 90°

Anodized aluminium.

Code: TC8901S



SCREW DRIVER BIT

M5 hexagon ball end
150mm bit

Code: TVM5



CONNECTOR PINS

Code: TV4



1. Drill, vacuum, insert glue and chemical anchor.



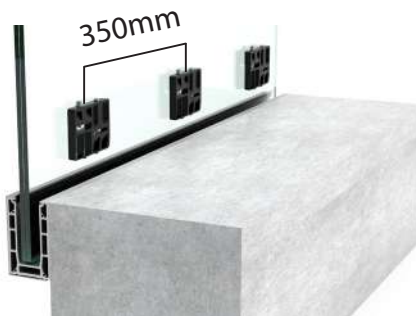
2. Place the profile and secure using a ratchet spanner.



3. Place out-facing lid and rubber seal.



4. Place outer plastic insert and laminated glass.



5. Insert the adjustable system and align the glass as shown in the bigger picture below.



6. Finished look.



To achieve perfect alignment use the two screws. First one tilts the glass towards you, the second opposite direction. When perfect alignment is achieved secure both screws.



TV 7600





GLASS FIXING SYSTEMS

Compatible with:

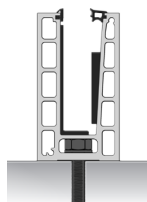
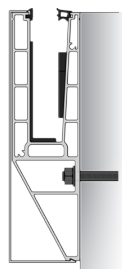


Series : TV7600/TV7600Y/TV6500/TV4500

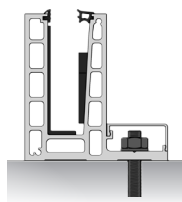
TV7600



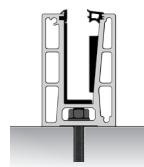
TV7600Y



TV6500



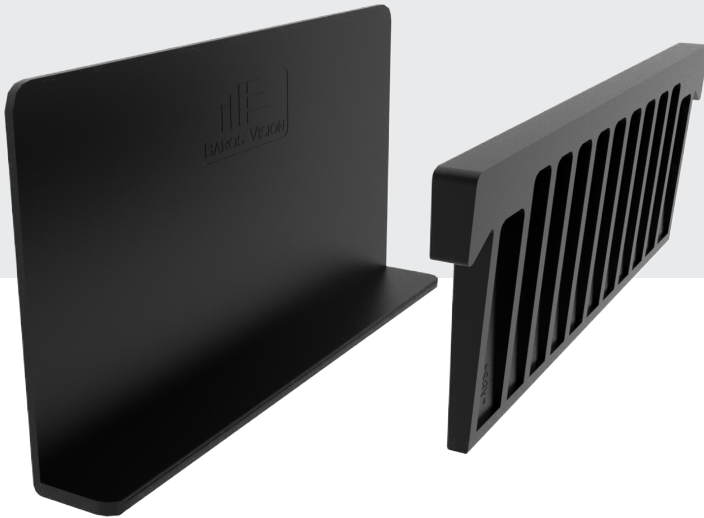
TV6500L



TV4500



NEW



WedgeFix L

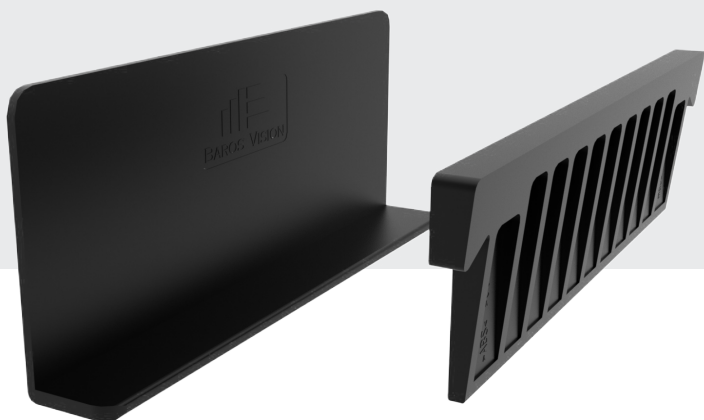
Technology

WedgeFix L is our glass fixation by use of plastic wedges. This is a popular design but improved with the added:

UV protection - our wedges will much longer last when exposed to UV rays, humidity, and salt.

Anti-shock protection - reduces the change of glass breakage caused by pressure while fixing the glass ...

NEW



WedgeFix S

Technology

... **Anti-pullout protection** - regardless of the internal or external, static or dynamic forces our wedges offer maximum grip and remain inside the profile holding the glass.

TV7600

BASE MOUNT



KEY FEATURES



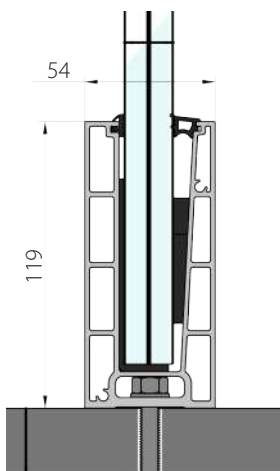
Up to 2 kN
16.3-21,52 mm glass.
Simplified installation.



Uses a wedge
to secure the glass.
Top and underfloor mount.



5m channel
4 Anchors per meter



Length: 5000mm
Height: 119mm
Width: 54mm

Channel: 3.73 kg / meter
Total: 4.23 kg / meter

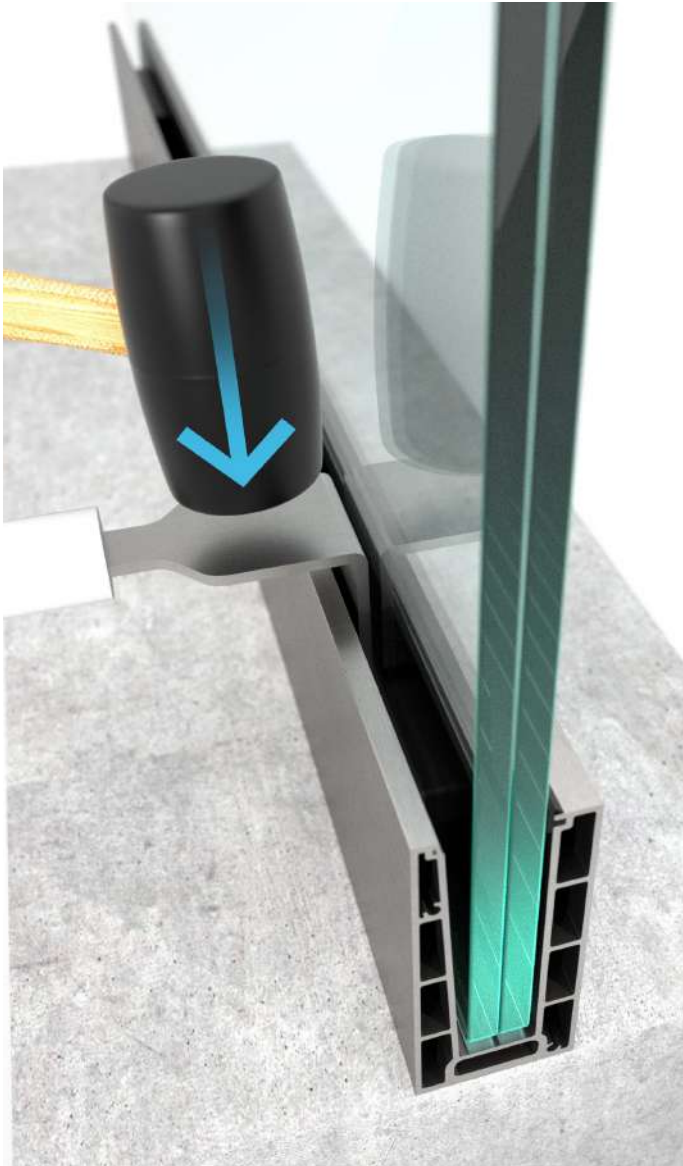
Aluminium: EN AW6060
Color: Inox, Natural, Raw,
Custom colour

Mounting anchors:
M8 / Concrete screw

Glass thickness:
6.6.2 / 6.6.4
8.8.2 / 8.8.4
10.10.2 / 10.10.4

Strength:
6.6 – up to 2 kN
8.8 – up to 2 kN
10.10 – up to 3 kN

Maximum Height:
8.8 – up to 1100 mm
10.10 – up to 1100 mm



TV7600 is our newest in-house designed glass railing system for top mount. This budget-oriented system provides a sleek finish, ease of installation, and requires minimum maintenance. The glass is secured in seconds using wedges and a wedge inserter. The wedges and profile design are ridged to remove the possibility of loose wedges which is a common problem with this type of design. You can rest assured that even after heavy use the system will keep its integrity.

Durability is a high priority for us and for our customers, this is why we made the internal parts from special plastic with UV protection. The rubber seals made from EPDM are perfectly suited for exposure to the sun thanks to their UV protection. TV7600 can be used for any meteorological conditions. Every part of this system has been designed to ease the installation and to reduce the risk factors associated with it.

With our experience in the field, we know the technical challenges that can arise and so we designed the system with extra care. **TV7600** successfully covers all residential and domestic applications. With certification for up to 2kN.

Compatible with:

WedgeFix L
Technology



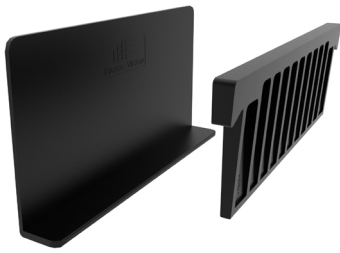
Full certification available on our website
www.tayskvision.com/en/

ASSEMBLED / DISASSEMBLED



To produce the TV7600 we use the highest quality series of aluminium EN AW 6063, it is well known for its extreme strength and elastic resistance designed to work with 12.76-21.52mm glass.

 **Components**



WedgeFix L

Plastic inserts
Front and back

- WFL12** 6 + 6
- WFL16** 8 + 8
- WFL20** 10 + 10



EPDM RUBBER SEAL

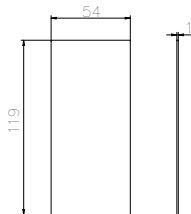
- RG-5F** Universal
- RG-5C** 6 + 6
- RG-5B** 8 + 8
- RG-5A** 10 + 10



END COVER

Anodized aluminium

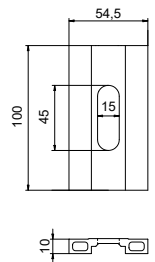
Code: TV7601K



DRAINAGE PLATE

Anodized aluminium

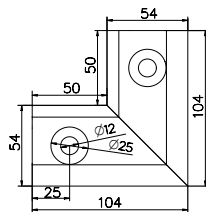
Code: TV7600DP



TV7600 Corner 90° (inside)

Anodized aluminium.

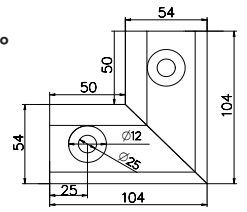
Code: TC7601



TV7600 Corner 90° (outside)

Anodized aluminium.

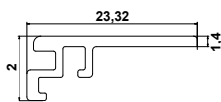
Code: TC7602



TRIM

Anodized aluminium

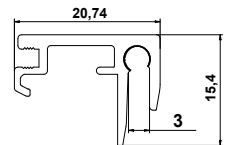
Code: TV7600I



TRIM

Anodized aluminium

Code: TV7600X3



WEDGE INSERTER

Wedge inserter

Code: TVM5



WEDGE REMOVER

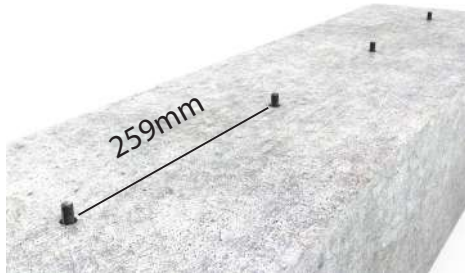
Wedge remover

Code: TV30



CONNECTOR PINS

Code: TV4



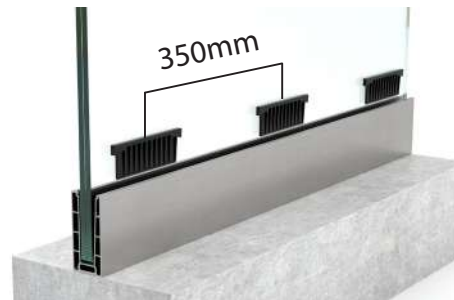
1. Drill, vacuum, insert glue and chemical anchor.



2. Place the profile and secure using a ratchet spanner.



3. Place back rubber seal, back plastic inserts and laminated glass.



4. Insert WedgeFix system and secure the glass as shown on bigger picture below.



5. Place front rubber seal with front and end covers.



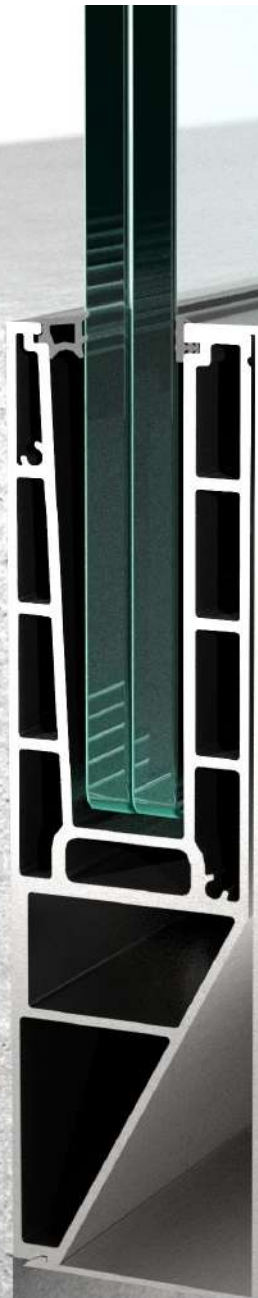
6. Finished look.



Once all wedges are in place, use wedge inserter and a hammer to insert them until the glass is locked.

TV7600Y

BASE MOUNT



KEY FEATURES



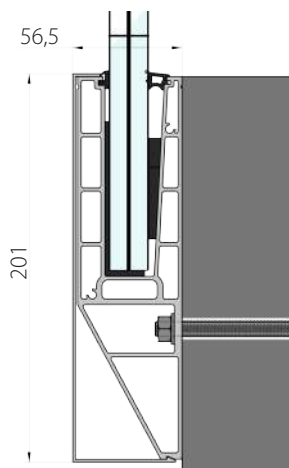
Up to 2 kN
16.3-21,52 mm glass.
Simplified installation.



Uses a wedge
to secure the glass.
Side mount.



5m channel, cover 7601Y
4 Anchors per meter



Length: 5000mm
Height: 201 mm
Width: 56,5 mm

Channel: 5.06 kg / meter
Total: 6.9 kg / meter

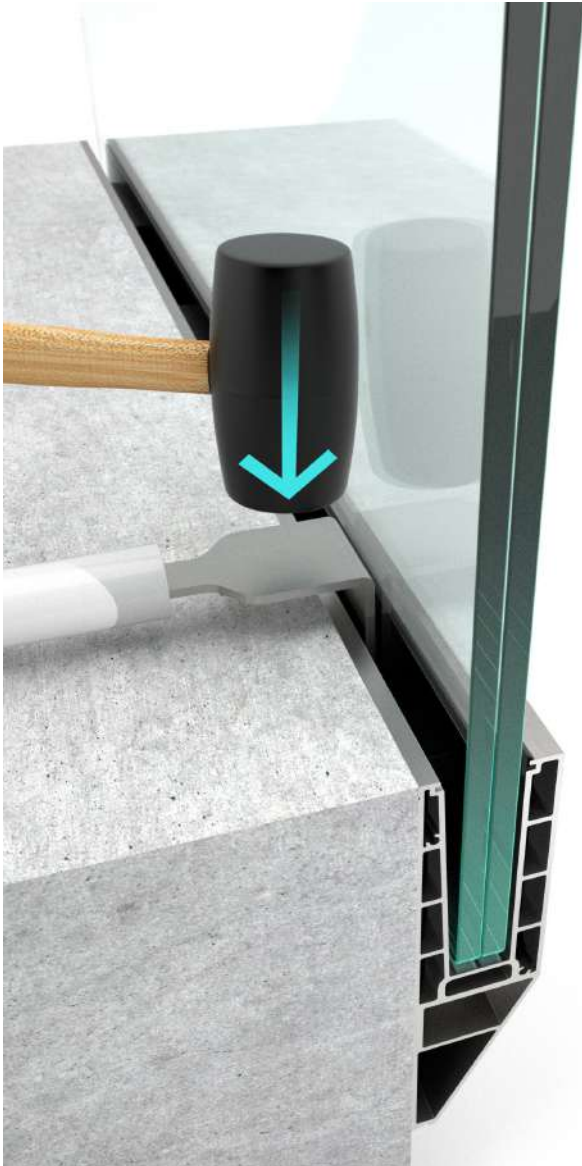
Aluminium: EN AW6060
Color: Inox, Natural, Raw,
Custom colour

Mounting anchors:
M8 / Concrete screw

Glass thickness:
6.6.2 / 6.6.4
8.8.2 / 8.8.4
10.10.2 / 10.10.4

Strength:
8.8 – up to 2 kN
10.10 – up to 3 kN

Maximum Height:
8.8 – up to 1100 mm
10.10 – up to 1100 mm



TV7600Y is our newest in-house designed Y-shaped glass railing system for side mount. This budget-oriented system provides a sleek finish, ease of installation, and requires minimum maintenance. The glass is secured in seconds using wedges and a wedge inserter. The wedges and profile design are ridged to remove the possibility of loose wedges which is a common problem with this type of design. You can rest assured that even after heavy use the system will keep its integrity.

Durability is a high priority for us and for our customers, this is why we made the internal parts from special plastic with UV protection. The rubber seals made from EPDM are perfectly suited for exposure to the sun thanks to their UV protection. TV7600Y can be used for any meteorological conditions. Every part of this system has been designed to ease the installation and to reduce the risk factors associated with it.

With our experience in the field, we know the technical challenges that can arise and so we designed the system with extra care. **TV7600Y** successfully covers all residential and domestic applications. With certification for up to 2kN.

Compatible with:

WedgeFix L
Technology



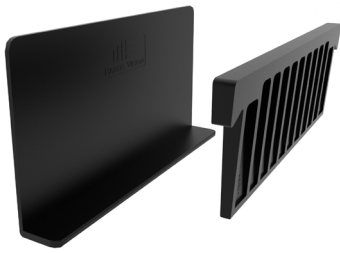
Full certification available on our website
www.tayskvision.com/en/

ASSEMBLED / DISASSEMBLED



To produce the TV7600Y we use the highest quality series of aluminium EN AW 6063, it is well known for its extreme strength and elastic resistance designed to work with 12.76-21.52mm glass.

Components



WedgeFix L

Plastic inserts
Front and back

- WFL12** 6 + 6
- WFL16** 8 + 8
- WFL20** 10 + 10



EPDM RUBBER SEAL

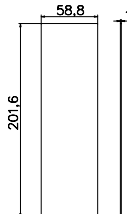
- RG-5F** Universal
- RG-5C** 6 + 6
- RG-5B** 8 + 8
- RG-5A** 10 + 10



END COVER

Anodized aluminium

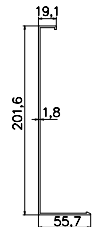
Code: TV7601YK



SIDE COVER

Anodized aluminium

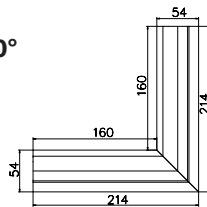
Code: TV7601Y



TV7600Y Corner 90° (inside)

Anodized aluminium.

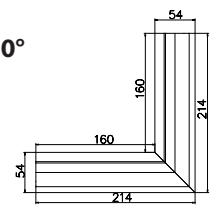
Code: TC7601Y



TV7600Y Corner 90° (outside)

Anodized aluminium.

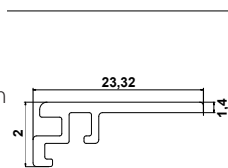
Code: TC7602Y



TRIM

Anodized aluminium

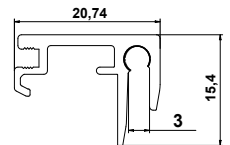
Code: TV7600I



TRIM

Anodized aluminium

Code: TV7600X3



WEDGE INSERTER

Wedge inserter

Code: TVM5



WEDGE REMOVER

Wedge remover

Code: TV30



CONNECTOR PINS

Code: TV4



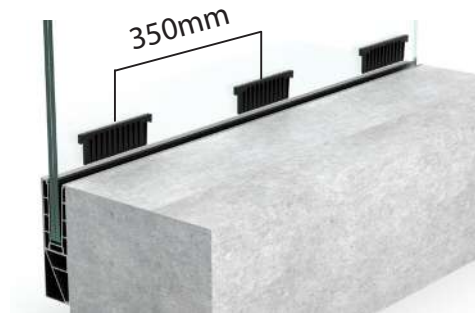
1. Drill, vacuum, insert glue and chemical anchor.



2. Place the profile and secure using a ratchet spanner.



3. Place back rubber seal, back plastic inserts and laminated glass.



4. Insert WedgeFix system and secure the glass as shown on bigger picture below.



5. Place front rubber seal with front and end covers.



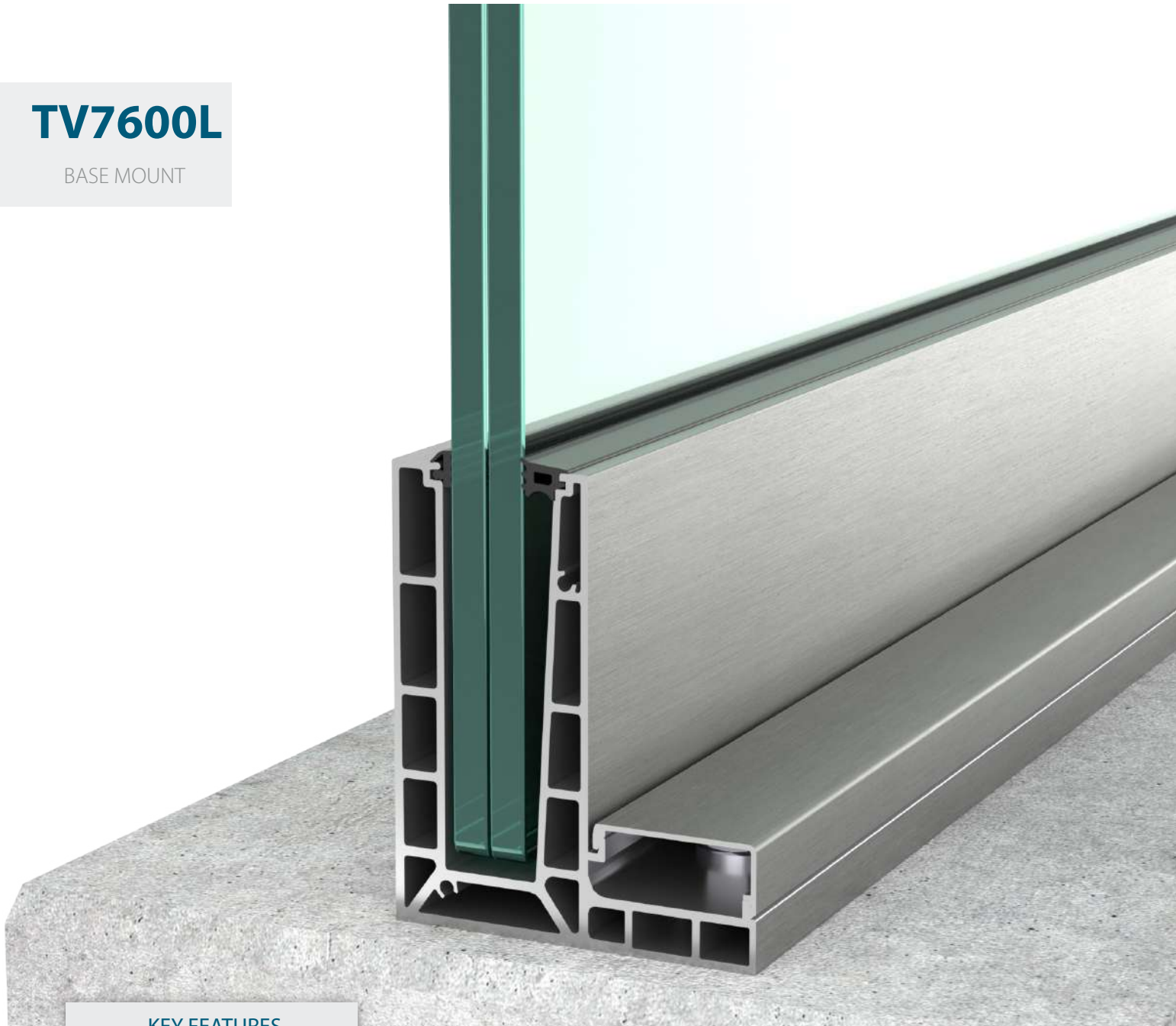
6. Finished look.



Once all wedges are in place, use wedge inserter and a hammer to insert them until the glass is locked.

TV7600L

BASE MOUNT



KEY FEATURES



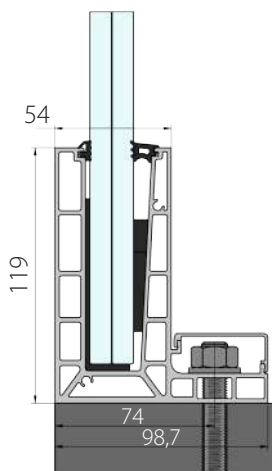
Up to 2 kN
16.3-21,52 mm glass.
Simplified installation.



Uses a wedge to secure
the glass



5m channel, cover
4 Anchors per meter



Length: 5000mm
Height: 119mm
Width: 98.7mm

Channel: 4.77 kg / meter
Total: 5.58 / meter

Aluminium: EN AW6060
Color: Inox, Natural, Raw,
Custom colour

Mounting anchors:
M10 / Concrete screw
M8 / Concrete screw

Glass thickness:
6.6.2 / 6.6.4
8.8.2 / 8.8.4
10.10.2 / 10.10.4

Strength:
8.8 – up to 2 kN
10.10 – up to 3 kN

Maximum Height:
8.8 – up to 1100 mm
10.10 – up to 1200 mm



TV7600L is our newest in-house designed glass railing system for base or underfloor mount with L-shape, designed to be mounted closer to the concrete edge than regular TV7600. This budget-oriented system provides a sleek finish, ease of installation, and requires minimum maintenance. The glass is secured in seconds using wedges and a wedge inserter. The wedges and profile design are ridged to remove the possibility of loose wedges which is a common problem with this type of design. You can rest assured that even after heavy use the system will keep its integrity.

Durability is a high priority for us and for our customers, this is why we made the internal parts from special plastic with UV protection. The rubber seals made from EPDM are perfectly suited for exposure to the sun thanks to their UV protection.

With our experience in the field, we know the technical challenges that can arise and so we designed the system with extra care. **TV7600L** successfully covers all residential and domestic applications. With certification for up to 2kN.

Compatible with:

WedgeFix L
Technology



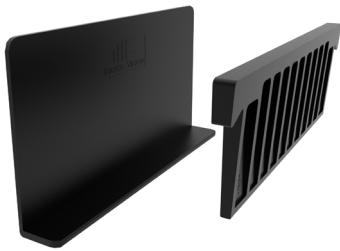
Full certification available on our website
www.tayskvision.com/en/

ASSEMBLED / DISASSEMBLED



To produce the TV7600L we use the highest quality series of aluminium EN AW 6063, it is well known for its extreme strength and elastic resistance designed to work with 12.76-21.52mm glass.

 **Components**



WedgeFix L

Plastic inserts
Front and back

- WFL12** 6+6
- WFL16** 8+8
- WFL20** 10+10



EPDM RUBBER SEAL

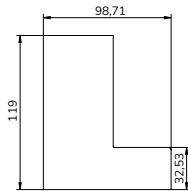
- RG-5F** Universal
- RG-5C** 8 + 8
- RG-5B** 10 + 10
- RG-5A** 12 + 12



END COVER

Anodized aluminium

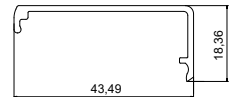
Code: TV7600K



SIDE COVER

Anodized aluminium

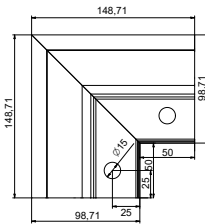
Code: TV7601



TV7600 Corner 90°

Anodized aluminium.

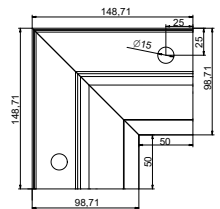
Code: TC7601



TV7600 Corner 90°

Anodized aluminium.

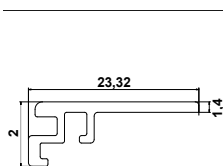
Code: TC7602



TRIM

Anodized aluminium

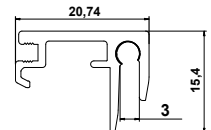
Code: TV7600I



TRIM

Anodized aluminium

Code: TV7600X3



WEDGE INSERTER

Wedge inserter

Code: TV20



WEDGE REMOVER

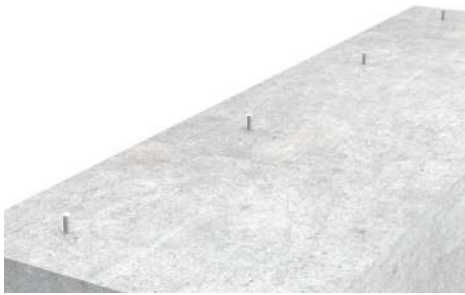
Wedge remover

Code: TV30

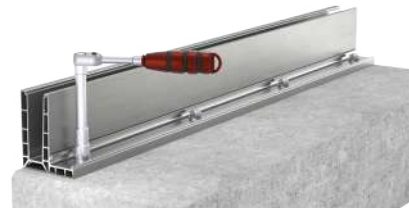


CONNECTOR PINS

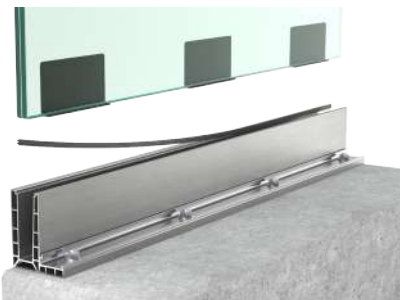
Code: TV4



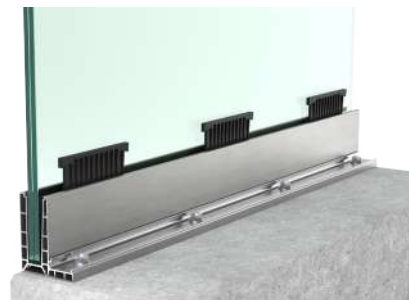
1. Drill, vacuum, insert glue and chemical anchor.



2. Place the profile and secure using a ratchet spanner.



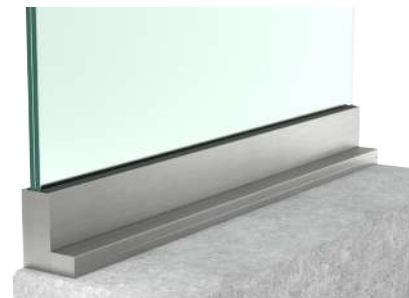
3. Place back rubber seal back plastic insert and laminated glass.



4. Insert WedgeFix system and secure the glass as shown on bigger picture below.



5. Place front and end covers



6. Finished look.



Once all wedges are in place, use wedge inserter and a hammer to insert them until the glass is locked.

TV 4500





TV 6500

BASE MOUNT



KEY FEATURES



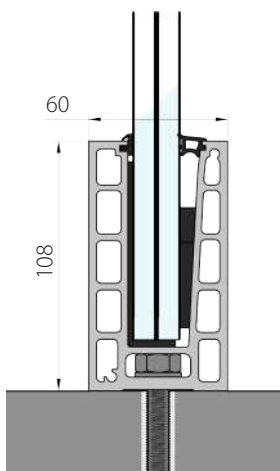
Up to 3 kN
12.76-21,52 mm glass.
Simplified installation.



Uses a wedge
to secure the glass.
Top and underfloor mount.



5m channel
4 anchors per meter



Length: 5000mm
Height: 108mm
Width: 60mm

Channel: 5.57 kg / meter
Total: 6.07 kg / meter

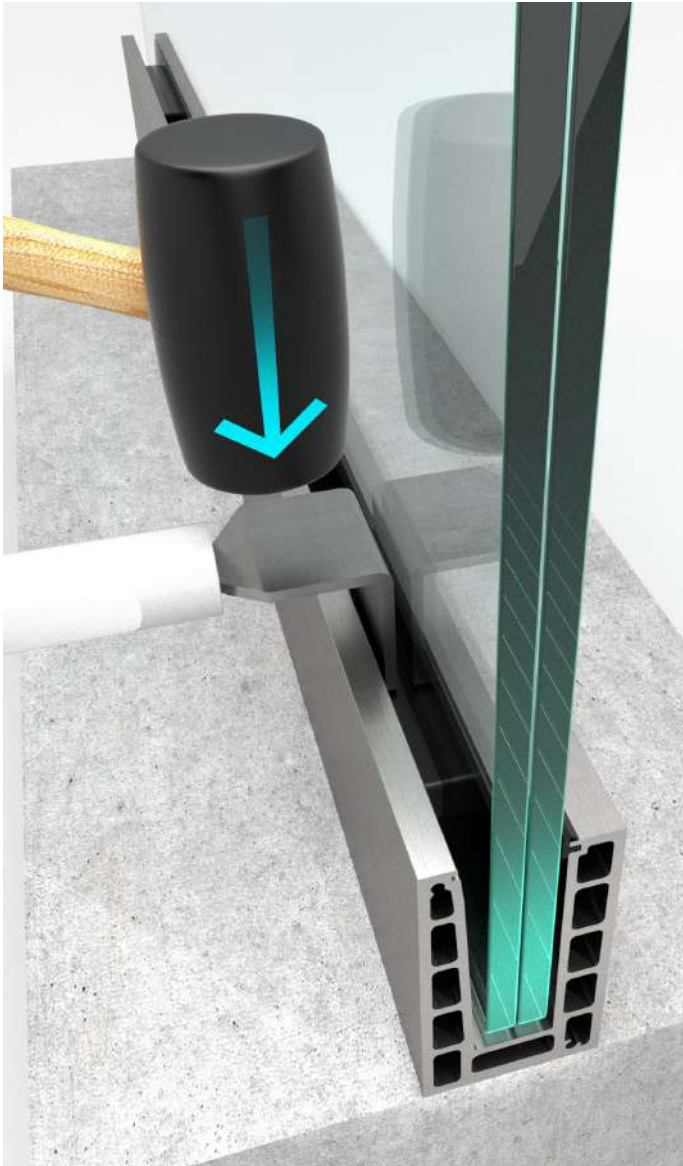
Aluminium: EN AW6063
Color: Inox, Natural, Raw,
Custom colour

Mounting anchors:
M10 / Concrete screw

Glass thickness:
6.6.2 / 6.6.4
8.8.2 / 8.8.4
10.10.2 / 10.10.4

Strength:
8.8 – up to 3 kN
10.10 – up to 3 kN

Maximum Height:
8.8 – up to 1200 mm
10.10 – up to 1200 mm



TV6500 is our heavy-duty budget-oriented glass railing system that offers industrial strength. Our team of in-house engineers designed the profile so it would provide easy and fast installation, with minimum maintenance required. The glass panels are secured in seconds using wedges and a wedge inserter.

Same as all of our glass railing systems the risk of breaking the glass during installation is reduced to a minimum. The **TV6500** profile and its wedges are ridged as that removes the possibility of loose wedges which is a common problem with this type of design. We can guarantee that profile will retain its integrity even after heavy use when it is mounted in places with large human traffic.

Strength and durability are priorities for every glass railing. This is the reason why the internal parts are manufactured using special plastic with added UV protection and the rubber seals are made of EPDM with excellent UV protection. Glass railing system **TV6500** can be used in every meteorological condition. Every part of this glass railing system is made in such a way that it ensures an easy and problem-free installation.

Compatible with:

WedgeFix L
Technology



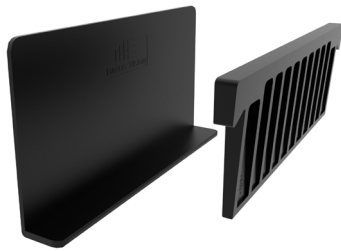
Full certification available on our website
www.tayskvision.com/en/

ASSEMBLED / DISASSEMBLED



To produce the TV6500 we use the highest quality series of aluminium EN AW 6063, it is well known for its extreme strength and elastic resistance designed to work with 12.76-21.52mm glass.

 **Components**



WedgeFix L

Plastic inserts
Front and back

- WFL12** 6 + 6
- WFL16** 8 + 8
- WFL20** 10 + 10



EPDM RUBBER SEAL

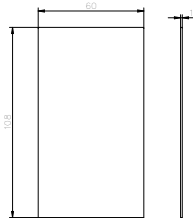
- RG-5F** Universal
- RG-5C** 6 + 6
- RG-5B** 8 + 8
- RG-5A** 10 + 10



END COVER

Anodized aluminium

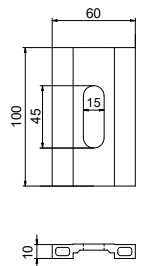
Code: TV6501K



DRAINAGE PLATE

Anodized aluminium

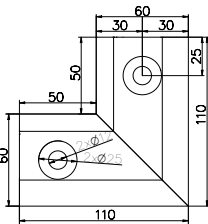
Code: TV6500DP



TV6500 Corner 90° (inside)

Anodized aluminium.

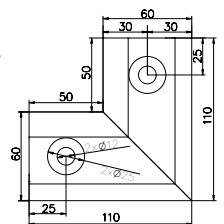
Code: TC6501



TV6500 Corner 90° (outside)

Anodized aluminium.

Code: TC6502



WEDGE INSERTER

Wedge inserter

Code: TV20



WEDGE REMOVER

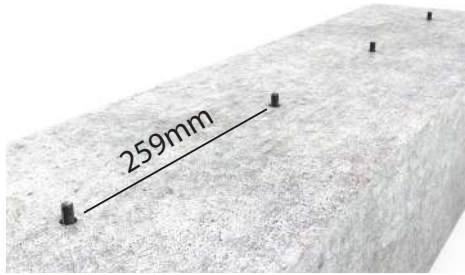
Wedge remover

Code: TV30



CONNECTOR PINS

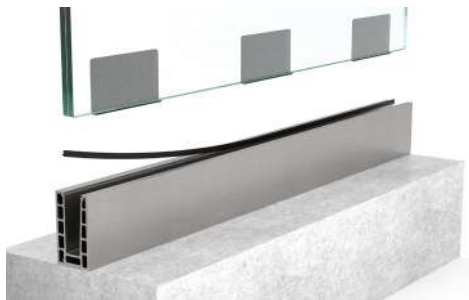
Code: TV4



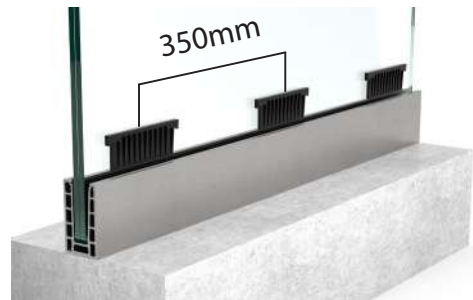
1. Drill, vacuum, insert glue and chemical anchor.



2. Place the profile and secure using a ratchet spanner.



3. Place back rubber seal, back plastic insert and laminated glass.



4. Insert WedgeFix system and secure the glass as shown on bigger picture below.



5. Place front rubber seal with front and end covers.



6. Finished look.



Once all wedges are in place, use wedge inserter and a hammer to insert them until the glass is locked.

TV 6500L

BASE MOUNT



KEY FEATURES



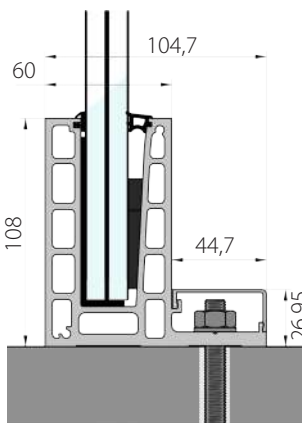
Continuous profile
12.76 - 21.52mm glass
Simplified installation.



Uses a wedge
to secure the glass.
Top and underfloor mount.



5m channel cover 6501
4/8 anchors per meter



Length: 5000mm
Height: 108mm
Width: 104,7mm

Channel: 6.46 kg / meter
Total: 7.4 kg / meter

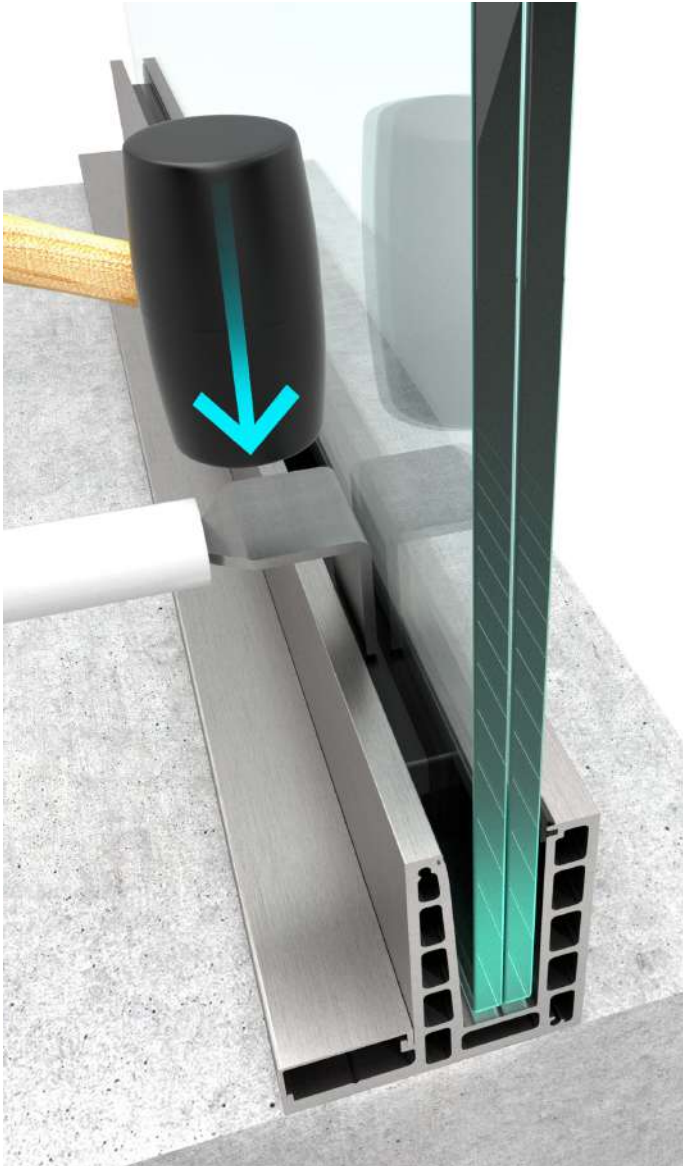
Aluminium: EN AW6063
Color: Inox, Natural, Raw,
Custom colour

Mounting anchors:
M10 / Concrete screw

Glass thickness:
6.62 / 6.64
8.82 / 8.84
10.10.2 / 10.10.4

Strength:
8.8 – up to 3 kN
10.10 – up to 3 kN

Maximum Height:
8.8 – up to 1200 mm
10.10 – up to 1200 mm



TV6500L is our L-shaped system that can be used as a glass canopy or glass railing. Specially designed by our engineers, this railing system has industrial strength, offers easy installation, and requires very little maintenance after it is mounted. The glass panels are secured in seconds using wedges and a wedge inserter.

Due to its unique L-shape and careful choice of materials, we have minimized the chance of breakage of the glass panel upon installation. The profile is fixed to the facade/wall, without the risk of breaking the concrete. The wedges and profile are ribbed, as this helps eliminate the possibility of loose wedges, something that can be a drawback in this type of design. You can rest assured that even after heavy use the system will keep its integrity.

Durability is the main priority for us as well as for our clients. This is the reason why the internal parts are manufactured using special plastic with added UV protection and the rubber seals are made of EPDM with excellent UV protection. The glass railing system **TV6500L** can be used for every meteorological condition. Every part of this glass balustrade has been planned to ease the installation and the associated risk factors.

Compatible with:

WedgeFix L
Technology



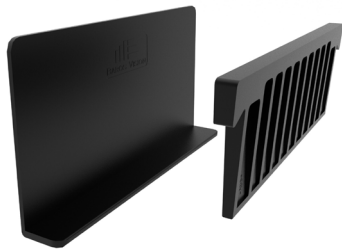
Full certification available on our website
www.tayskvision.com/en/

ASSEMBLED / DISASSEMBLED



To produce the TV6500L we use the highest quality series of aluminium EN AW 6063, it is well known for its extreme strength and elastic resistance designed to work with 12.76-21.52mm glass.

 **Components**



WedgeFix L

Plastic inserts
Front and back

- WFL12** 6 + 6
- WFL16** 8 + 8
- WFL20** 10 + 10



EPDM RUBBER SEAL

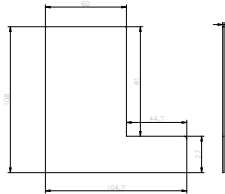
- RG-5F** Universal
- RG-5C** 6 + 6
- RG-5B** 8 + 8
- RG-5A** 10 + 10



END COVER

Anodized aluminium

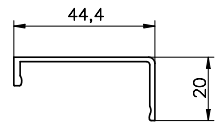
Code: TV6501LK



SIDE COVER

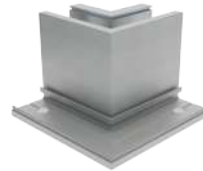
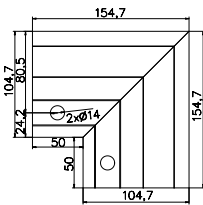
Anodized aluminium

Code: TV6501L



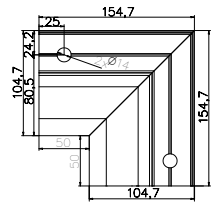
TV6500L Corner 90°

Anodized aluminium.
Code: TC6501L



TV6500 Corner 90°

Anodized aluminium.
Code: TC6502L



WEDGE INSERTER

Wedge inserter

Code: TV20



WEDGE REMOVER

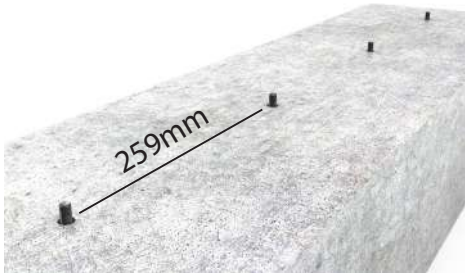
Wedge remover

Code: TV30



CONNECTOR PINS

Code: TV4



1. Drill, vacuum, insert glue and chemical anchor.



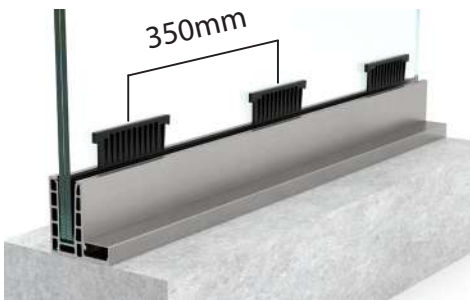
2. Place the profile and secure using a ratchet spanner.



3. Place out-facing lid.



4. Place back rubber seal, back plastic inserts and laminated glass.



5. Insert WedgeFix system and secure the glass as shown on bigger picture below.



6. Finished look.



Once all wedges are in place, use wedge inserter and a hammer to insert them until the glass is locked.

BULGARIA

WAVE RESORT

This Ultra All inclusive hotel situated in Aheloy has won the award Building of the year for Innovative design. Clear glass.

**BUILDING OF
THE YEAR**

AWARD 2020

TV 4500



TV 4500

BASE MOUNT



KEY FEATURES



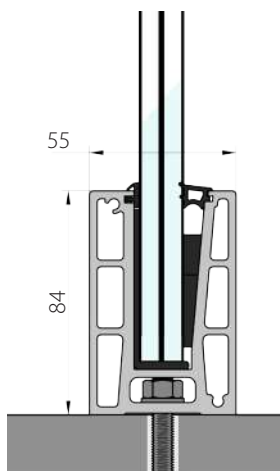
Continuous profile
10.76-17.52mm glass,
Simplified installation.



Uses a wedge to secure
the glass



5+m channel
4 anchors per meter



Length: 5000mm
Height: 84mm
Width: 55mm

Channel: 4.26 kg / meter
Total: 4.76 kg / meter

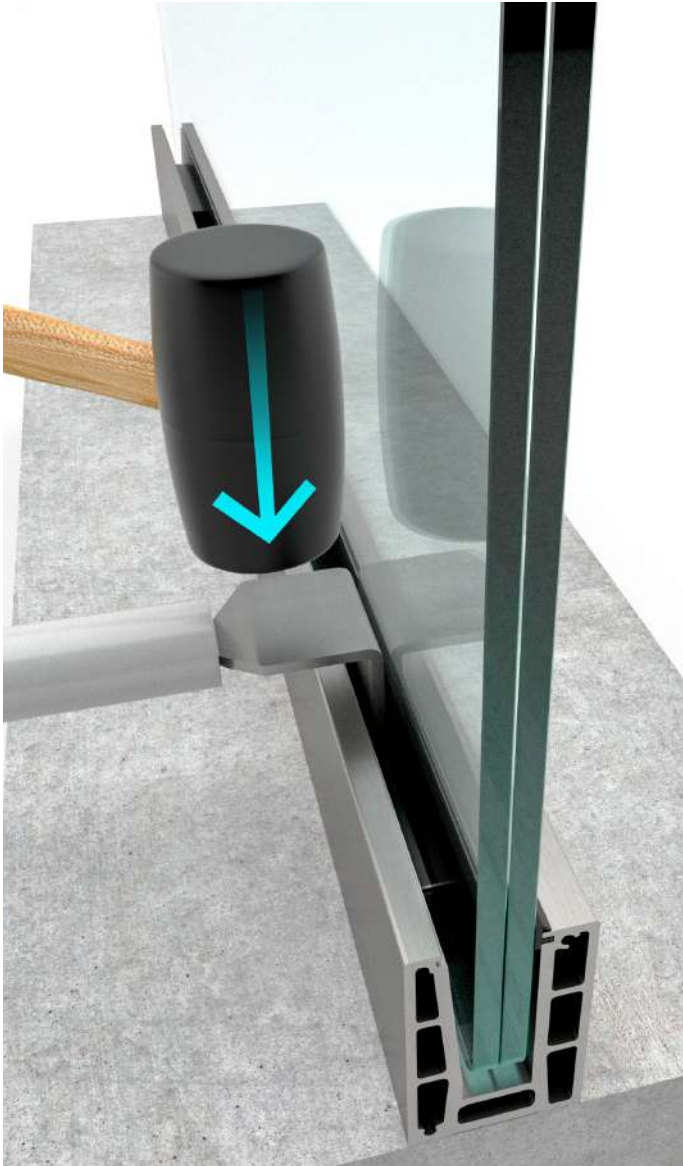
Aluminium: EN AW6063
Color: Inox, Natural, Raw,
Custom colour

Mounting anchors:
M8 Concrete screw

Glass thickness:
5.5.2 / 5.5.4
6.6.2 / 6.6.4
8.8.2 / 8.8.4

Strength:
6.6 – up to 1 kN
8.8 – up to 2 kN

Maximum height:
6.6 – up to 800 mm
8.8 – up to 1100 mm



TV4500 is our compact but extremely sturdy glass railing system. At a height of just 80mm this technical marvel of a system provides ease of installation, great strength, and requires minimum maintenance. The glass is secured in seconds using wedges and a wedge inserter. As with every glass railing system that we offer, the main factors here are strength and durability.

For the manufacturing of the internal parts of **TV4500**, we have used special plastic and rubber seals from EPDM. The design of the parts makes the system suitable for exposure to the sun thanks to its UV protection. **TV4500** can be used for all meteorological conditions. Thanks to our experience in the field we have designed the system in such a way that the installation is easy and all the technical obstacles that could arise during the process are eliminated.

TV4500 successfully covers all residential and domestic applications while being small and barely noticeable. This system is certified at 2kN.

Compatible with:

WedgeFix L
Technology



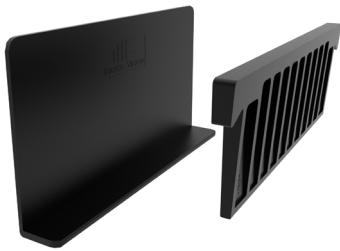
Full certification available on our website
www.tayskvision.com/en/

ASSEMBLED / DISASSEMBLED



To produce the TV4500 we use the highest quality series of aluminium EN AW 6063, it is well known for its extreme strength and elastic resistance designed to work with 10.76-17.52mm glass.

 **Components**



WedgeFix S

Plastic inserts
Front and back

- WFL12** 5 + 5
- WFL16** 6 + 6
- WFL20** 8 + 8



EPDM RUBBER SEAL

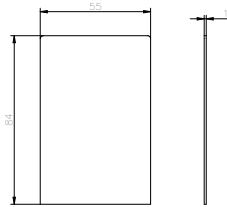
- RG-5F** Universal
- RG-5C** 5 + 5
- RG-5B** 6 + 6
- RG-5A** 8 + 8



END COVER

Anodized aluminium

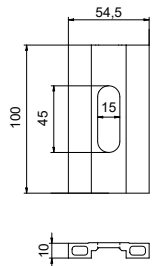
Code: TV4501K



DRAINAGE PLATE

Anodized aluminium

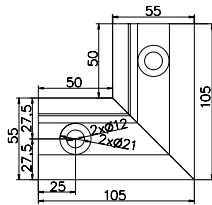
Code: TV4500DP



TV4500 Corner 90°

Anodized aluminium.

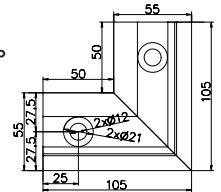
Code: TC4501



TV4500 Corner 90°

Anodized aluminium.

Code: TC4502



WEDGE INSERTER

Wedge inserter

Code: TV20



WEDGE REMOVER

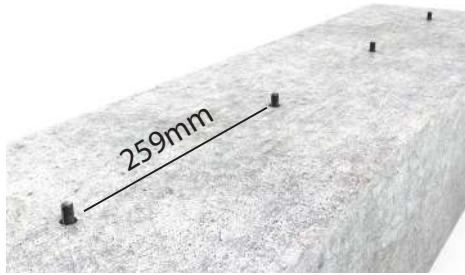
Wedge remover

Code: TV30



CONNECTOR PINS

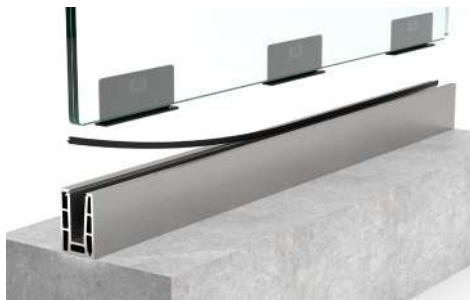
Code: TV4



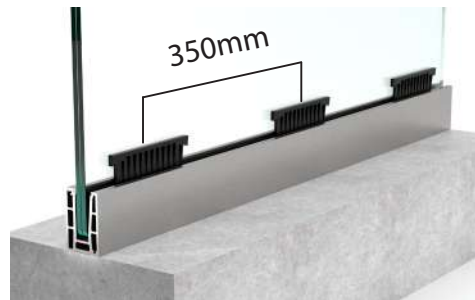
1. Drill, vacuum, insert glue and chemical anchor.



2. Place the profile and secure using a ratchet spanner.



3. Place back rubber seal, back plastic inserts and laminated glass.



4. Insert WedgeFix system and secure the glass as shown on bigger picture below.



5. Place front and end covers



6. Finished look.



Once all wedges are in place, use wedge inserter and a hammer to insert them until the glass is locked.

TV 3500RS





TV 3500

SIDE MOUNT



KEY FEATURES



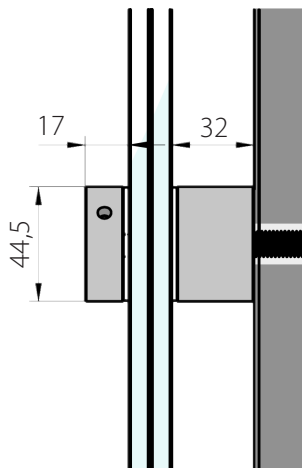
Solid stainless steel 304
12-30mm glass



Handmade.



4-6 standoffs
per meter



Width: 44,5mm
Top part: 15mm

Base size: 30mm

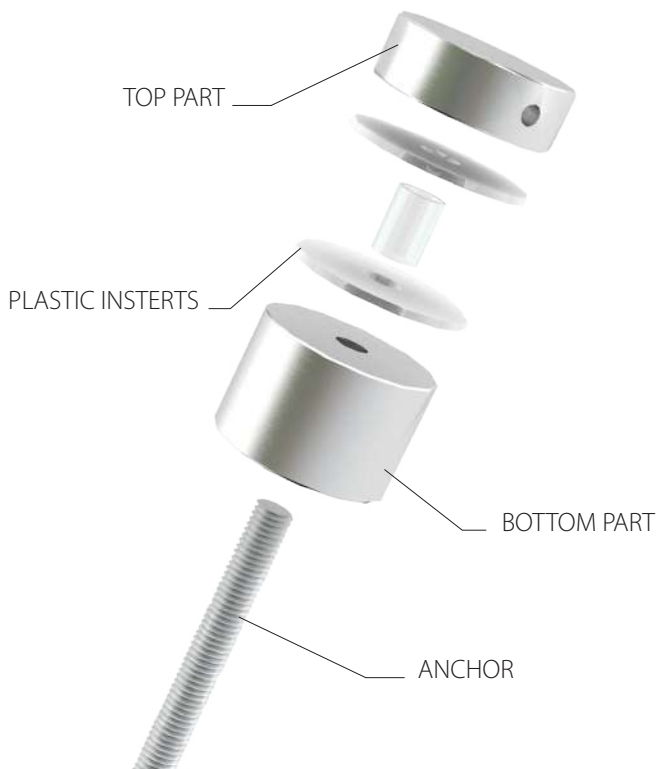
Material:Stainless steel
304
Surface:Matte

Weight: 624gr each

Glass thickness:
6.6.2 / 6.6.4
8.8.2 / 8.8.4

Strength:
6.6 – up to 1 kN
8.8 – up to 2 kN

Maximum Height:
6.6 – up to 1100 mm
8.8 – up to 1150 mm



TV3500 is our fixed glass adapter. Produced from solid 304 stainless steel it provides unrivaled strength great corrosion resistance and a clean design. This system comes with included spacer from 304SS.

TV3500 can hold triplex glass with a width of 12-30mm. The height of the glass can be from 1100 to 1400mm depending on the type of handrail used. The exceptional corrosion resistance makes this system a practical choice for different environments. For superior corrosion resistance the adapters can be made of 316 stainless steel upon request. The system can be finished with a decorative aluminium slimline handrail (TV6023) for limitless look or with a standard square (TV6024) or round handrails (TV6022).

TV3500 is an excellent choice for modern-looking Juliet balconies, staircases, and glass railings.

/ INSTALATION GUIDE



Full certification available on our website www.tayskvision.com/en/



1. Drill, vacuum, insert glue and chemical anchor.



2. Place the base and the plastic protectors.



3. Place the glass.



4. Secure top of standoffs.

TV3500RS

BASE MOUNT



KEY FEATURES



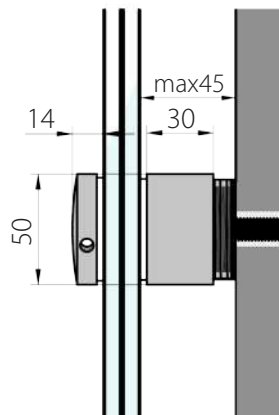
Solid stainless steel 304
12-30mm glass



Handmade.



4-6 standoffs
per meter



Width: 50mm
Top part: 11mm

Base size: 30mm

Material: Stainless steel
316

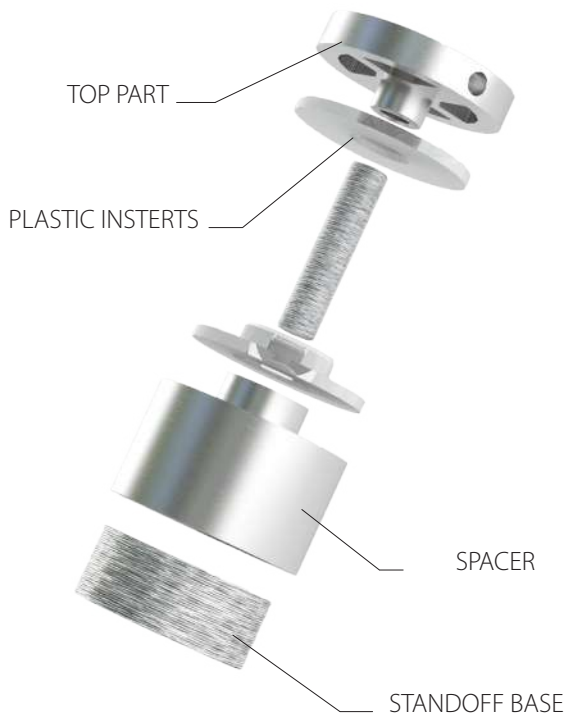
Finish: Brush

Weight: 409gr each

Glass thickness:
6.6.2 / 6.6.4
8.8.2 / 8.8.4

Strength:
6.6 – up to 1 kN
8.8 – up to 2 kN

Maximum Height:
6.6 – up to 1100 mm
8.8 – up to 1150 mm



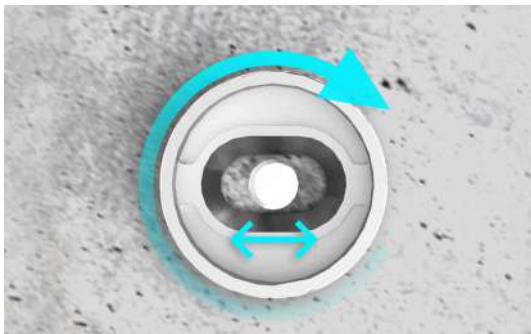
TV3500RS is our regulated glass adapter. Manufactured from 316 stainless steel, it makes the installation easy. The regulated adapter allows precise glass fixation with its 2-axis regulation. Left/Right, Up/Down, and Forward/Backward, a possibility to adjust in every direction. The 316 stainless steel is well known for its superior corrosion resistance and durability.

TV3500RS can be used on french balconies, staircases, and glass railings. It can support glass with thicknesses from 12 to 24mm.

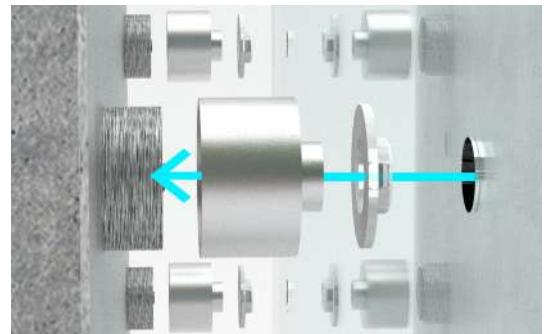
/ INSTALATION GUIDE



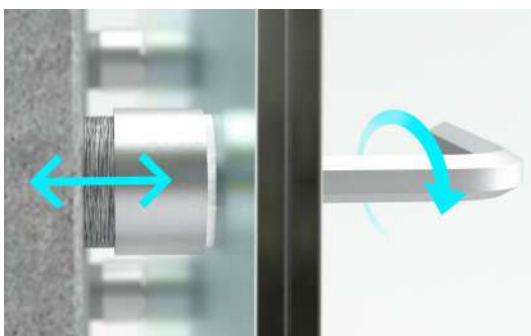
Full certification available on our website www.tayskvision.com/en/



1. You can adjust standoff position.



2. Screw the spacer and add the plastic protectors. Place the glass.



3. You can move backwards or forwards to regulate the glass.



4. Once everything is in place screw on top part of the standoff. Finished look.

TV 2500

BASE MOUNT



KEY FEATURES



Solid stainless steel 304
12-30mm glass

Height: 317,5mm
Width: 50mm

Base size: 80mm



Precise alignment from the
inside of the profile. Side
mount

Material: SS304
Surface: Matte



HANDMADE
stainless steel parts

Weight: 2,7kg / each

Glass thickness:
6.6.2 / 6.6.4
8.8.2 / 8.8.4

Strength:
6.6 – up to 1 kN
8.8 – up to 2 kN

Maximum Height:
6.6 – up to 1100 mm
8.8 – up to 1150 mm



TV2500 is our handmade stainless steel post for glass railings made of 304 stainless steel. Designed by our team of installers and manufactured by hand in our factory. We also offer a side-mounted variant.

TV2500 is installed with chemical or mechanical anchors and it can hold a glass of 12mm-25.52mm. It provides the flexibility of installation as it can be used on balconies, stairs, and even for awnings and canopies as it is extremely durable. Securing the glass is achieved with custom-made standoffs / glass adapters. The exceptional corrosion resistance makes this system a practical choice for different environments. For superior corrosion resistance the adapters can be made of 316 stainless steel upon request. The system can be finished with a decorative aluminium slimline handrail (TV6023) for limitless look or with a standard square (TV6024) or round handrails (TV6022).

TV2500 is a good choice for staircases, glass railings, and balustrades.

/ INSTALATION GUIDE



Full certification available on our website
www.tayskvision.com/en/



1. Drill, vacuum, insert glue and chemical anchor.



2. Mount and secure the columns.



3. Place plastic protectors and insert the glass



4. Secure the glass with the top part of the standoffs.

TV2500SM

SIDE MOUNT



KEY FEATURES



Solid stainless steel 304
12-30mm glass



Precise alignment from the
inside of the profile. Side
mount



5m channel, cover 9901S
4 Anchors per meter

Height: 543mm
Base size: 80mm

Width: 50mm
Material: SS304 / SS316

Surface: Matte
Handmade

Weight: 3,7 kg each

Glass thickness:

6.6.2 / 6.6.4
8.8.2 / 8.8.4

Strength:

6.6 – up to 1 kN
8.8 – up to 2 kN

Maximum Height:

6.6 – up to 1100 mm
8.8 – up to 1150 mm



TV2500SM is our handmade post from stainless steel 304, designed for side mount. It provides the flexibility of installation as it can be used on balconies, stairs, canopies, and awnings.

Securing the glass is achieved with custom-made standoffs / glass adapters. TV2500SM can also be made from 316 stainless steel upon request, thus further increasing the corrosion resistance. The side mount which TV2500SM offers means that you will have more space available as usually glass railing columns that use top mount take part of the space of the staircase or balcony. The system can be finished with a decorative aluminium slimline handrail (TV6023) for limitless look or with a standard square (TV6024) or round handrails (TV6022).

/ INSTALATION GUIDE



Full certification available on our website www.tayskvision.com/en/



1. Drill, vacuum, insert glue and chemical anchor.



2. Mount and secure the columns.



3. Place plastic protector and insert the glass.



4. Secure the glass with the top part of the standoffs.



Handrails & Accessories

TV6024

SQUARE HANDRAIL



TV 6024 – is our square aluminium handrail with a rubber seal inside. It can be used on glass with a thickness of 10 to 20 mm.



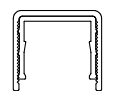
WX 6024/10



WX 6024/12



WX 6024/16



WX 6024/20

Available finish options :



Accessories



TV 6024B/90



TV 6024B/135



TV 6024F



TV 6024S



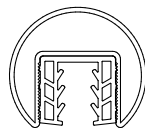
TV 6024K

TV6022

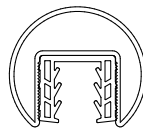
ROUND HANDRAIL



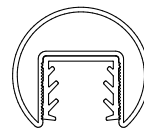
TV 6022 – is our round aluminium handrail with a rubber seal inside. It can be used on glass with a thickness of 10 to 20 mm.



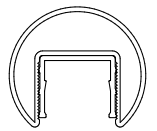
TV 6022/ 10



TV 6022/ 12



TV 6022/ 16



TV 6022/ 20

Available finish options :



Accessories



TV 6022B/90



TV 6022B/135



TV 6022F



TV 6022S



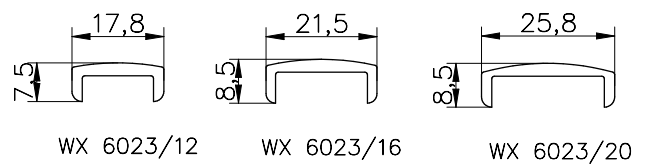
TV 6022K

TV6023

SLIM HANDRAIL



TV 6023 – is our decorative aluminium handrail with slimline and no rubber seal. It can be used on glass with a thickness of 12 to 20 mm.



Available finish options :



Accessories



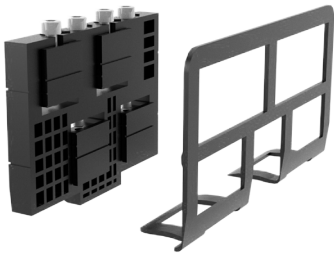
TV 6023B/90



TV 6023B/135



TV 6023F



InstAlign+
Adjustable kits for
glass alignment
K99-16 8+8
K99-20 10+10
K99-24 12+12



EPDM RUBBER SEAL
RG-0090F Universal
RG-0091 8 + 8
RG-0092 10 + 10
RG-0093 12 + 12



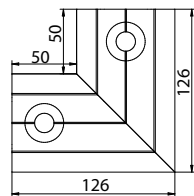
END COVER
Anodised aluminium
Code: TV9900K



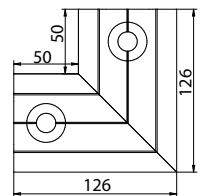
DRAINAGE PLATE
Anodised aluminium
Code: TV9900DP



TV9900 Corner 90°
Anodised aluminium.
Code: TC9900



TV9900 Corner 90°
Anodised aluminium.
Code: TC9900



TRIM
Anodised aluminium
Code: TV9900I



TRIM
Anodised aluminium
Code: TV9900X3

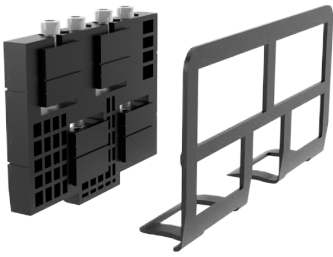


SCREW DRIVER BIT
M5 hexagon ball end
150mm bit
Code: TVM5



CONNECTOR PINS
Code: TV4

 **Components**



InstAlign+
Adjustable kits for
glass alignment
K99-16 8+8
K99-20 10+10
K99-24 12+12



EPDM RUBBER SEAL
RG-0090F Universal
RG-0091 8 + 8
RG-0092 10 + 10
RG-0093 12 + 12



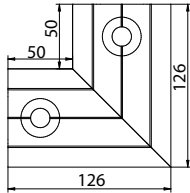
END COVER
Anodised aluminium
Code: TV9900K



DRAINAGE PLATE
Anodised aluminium
Code: TV9900DP



TV9900 Corner 90°
Anodised aluminium.
Code: TC9900



TV9900 Corner 90°
Anodised aluminium.
Code: TC9900

