



# TAYSK ViSiON

PREMIUM RAILING SOLUTIONS

INNOVATIVE GLASS RAILING SYSTEMS

"TAYSK VISION" LTD - Bulgaria

"RONI VISION" - Würzburgerstr. 592 / 90768 Fürth

+49 911 3 6666 299

[www.tayskvision.com](http://www.tayskvision.com)

+49 157 378 264 26

[info@tayskvision.com](mailto:info@tayskvision.com)



**TAYSK ViSiON**  
PREMIUM RAILING SOLUTIONS

PRODUCT  
CATALOGUE  
2022



INNOVATIVE GLASS RAILING SYSTEMS

[WWW.TAYSKVISION.COM](http://WWW.TAYSKVISION.COM)



# TAYSK Vision

## PREMIUM RAILING SOLUTIONS

PREMIUM GLASS RAILING SYSTEMS

Taysk Vision Ltd. is a European glass railing systems manufacturer based in Bulgaria. In 2007 the company was established with the goal to present the market with innovative, easy-to-install, and high-quality glass railing systems. Today, we continue to follow our core goals and provide our customers and partners with high-end products.

Thanks to our dedication and huge investments in production, research, development, and certifications, we were able to secure our place among the best glass railing manufacturers in Europe. We offer our customers a complete product from the railing system to accessories and glass for railings. With our team of in-house engineers and the extensive experience we have in the field of glass railing design and installation, we can offer custom solutions.

The raw materials we use are from reputable and respected suppliers which guarantees the quality of our finished products. The technology behind our adjustable glass railing systems is innovative and surpasses by far the competitor's options. Our "Vision" series offer eye-catching aesthetics and high safety standards. We pride ourselves on being able to deliver the perfect balance of quality, innovation, and price.

[WWW.TAYSKVISION.COM](http://WWW.TAYSKVISION.COM)



**TV 9900**

**TV 9900S**

**TV 9900L**

**TV 9900Y**

**TV 8900**

**TV 8900S**

CONTENT MENU :

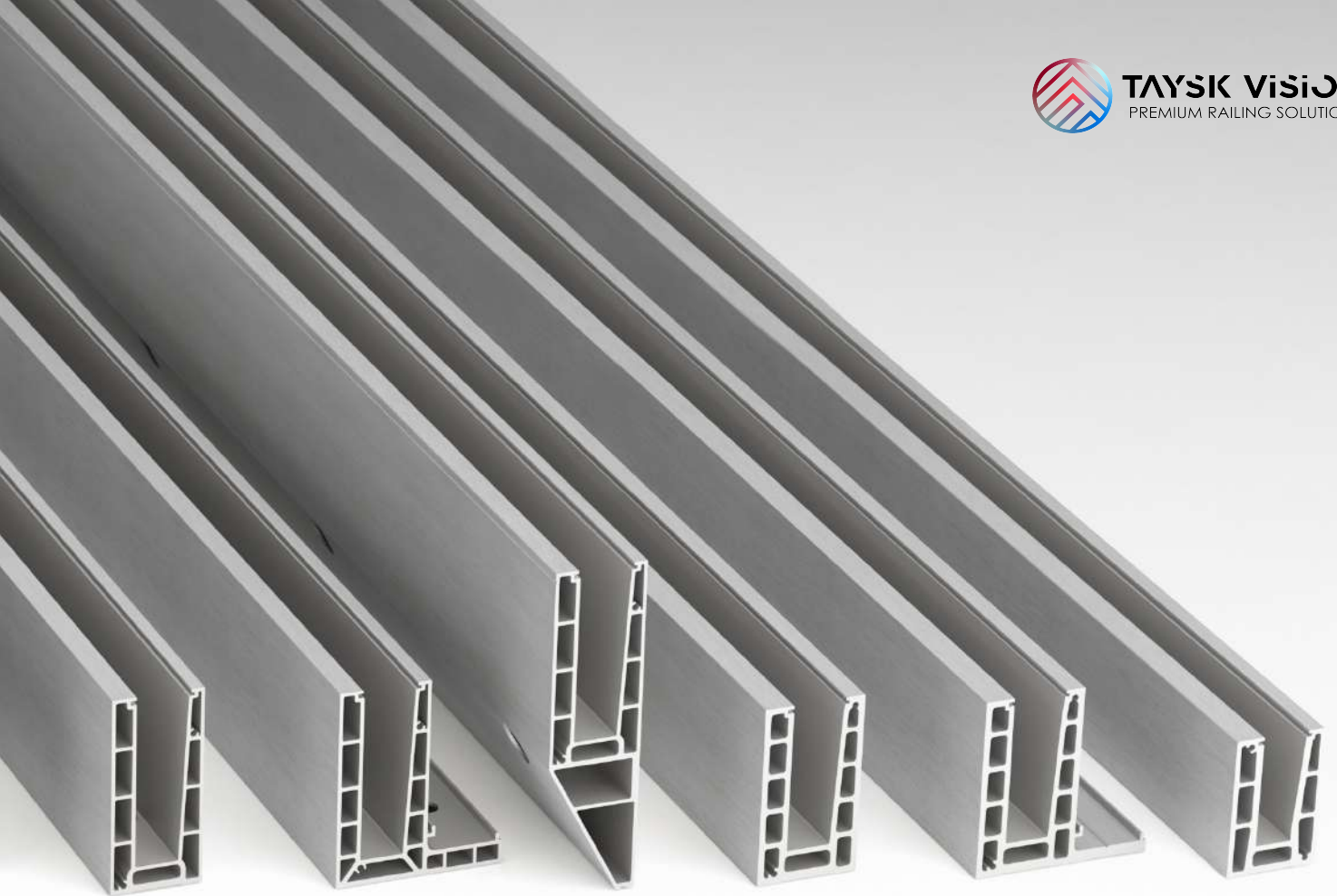
**10**

**40**

**70**

<b>12</b>	- base mount	<b>42</b>	- base mount	<b>72</b>	- base mount
<b>16</b>	- side mount	<b>46</b>	- side mount	<b>74</b>	- side mount
<b>20</b>	- base mount	<b>50</b>	- base mount	<b>76</b>	- side mount
<b>24</b>	- side mount	<b>56</b>	- base mount	<b>78</b>	- side mount
<b>30</b>	- base mount	<b>60</b>	- base mount		
<b>34</b>	- side mount	<b>66</b>	- base mount		





**TV 7600**

**TV 7600L**

**TV 7600Y**

**TV 6500**

**TV 6500L**

**TV 4500**

**80**

**85**

**86**

**81**

- square handrail

**85**

**86**

**82**

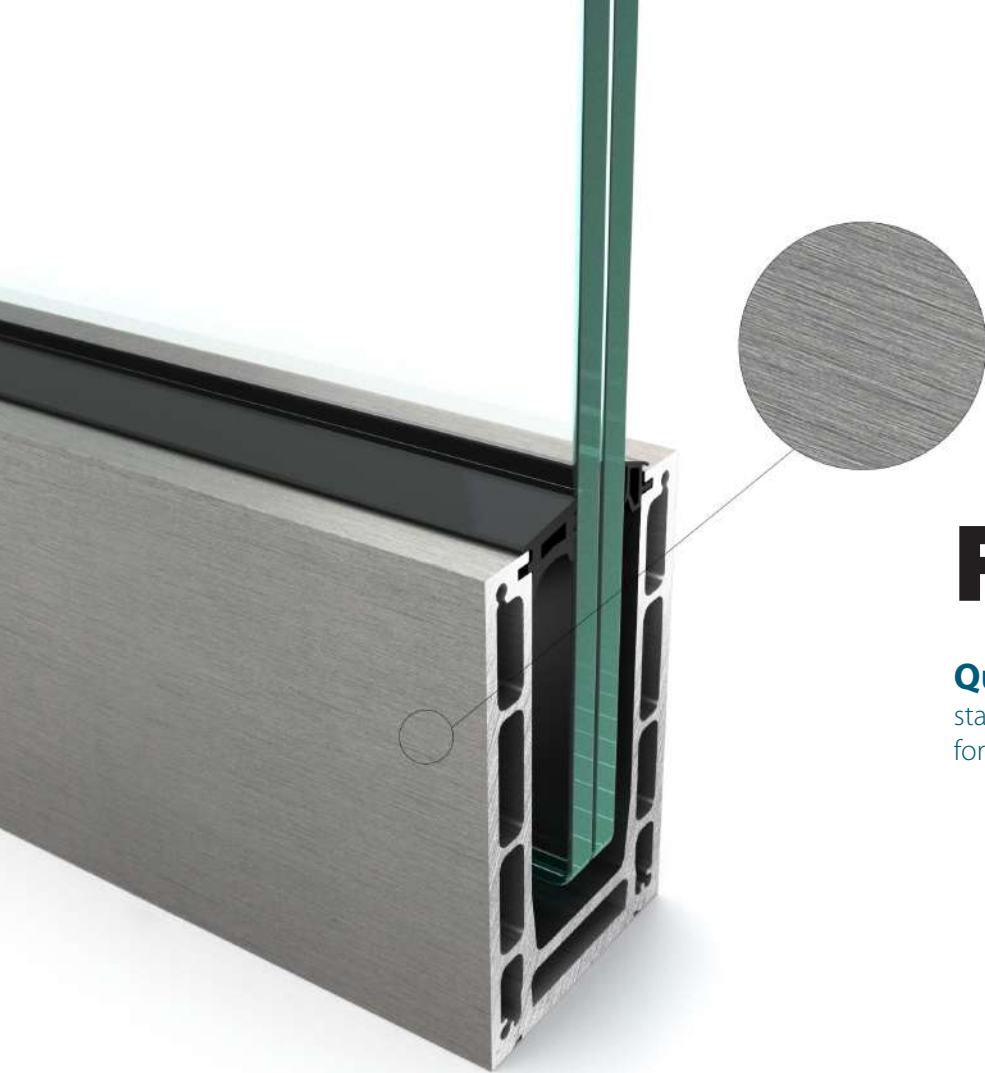
- round handrail

**83**

- slim handrail



**TAYSK ViSiON**  
PREMIUM RAILING SOLUTIONS



# FINISHES

**Qualanod Anodising**  
standard 20+ microns  
for all systems.

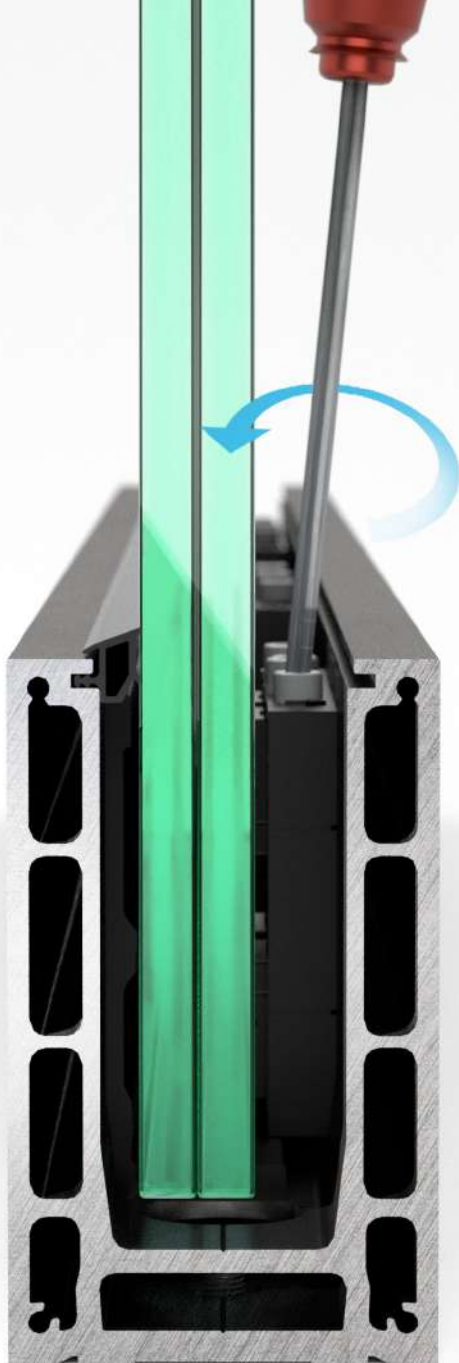


# CUSTOM RAL

Wide colour selection available for all systems.







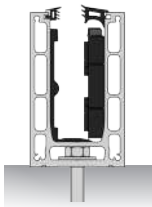
# ADJUSTABLE SYSTEMS

Compatible with:

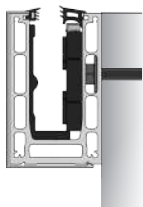


## Series : TV9900/TV8900

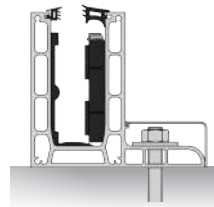
TV9900



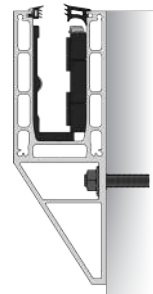
TV9900S



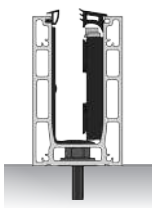
TV9900L



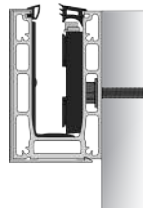
TV9900Y



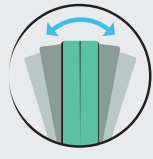
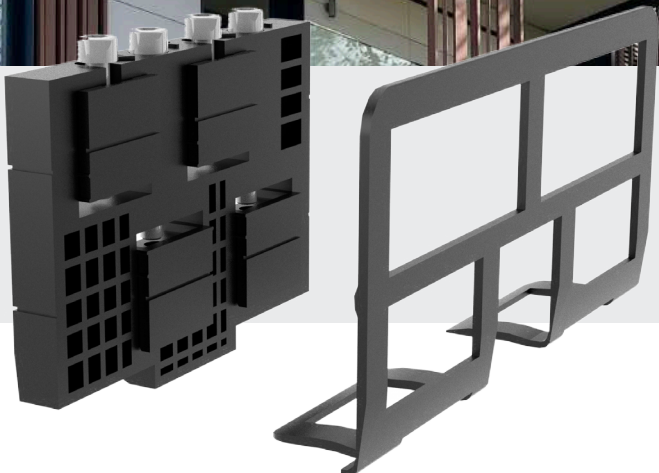
TV8900



TV8900S



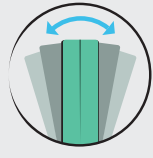




# InstAlign+

Technology

InstAlign+ is our very well-known adjustable system, designed by Taysk from a special blend of plastic with twice the recommended UV protection. Allows precise glass alignment in seconds and unrivaled strength.



# InstAlign

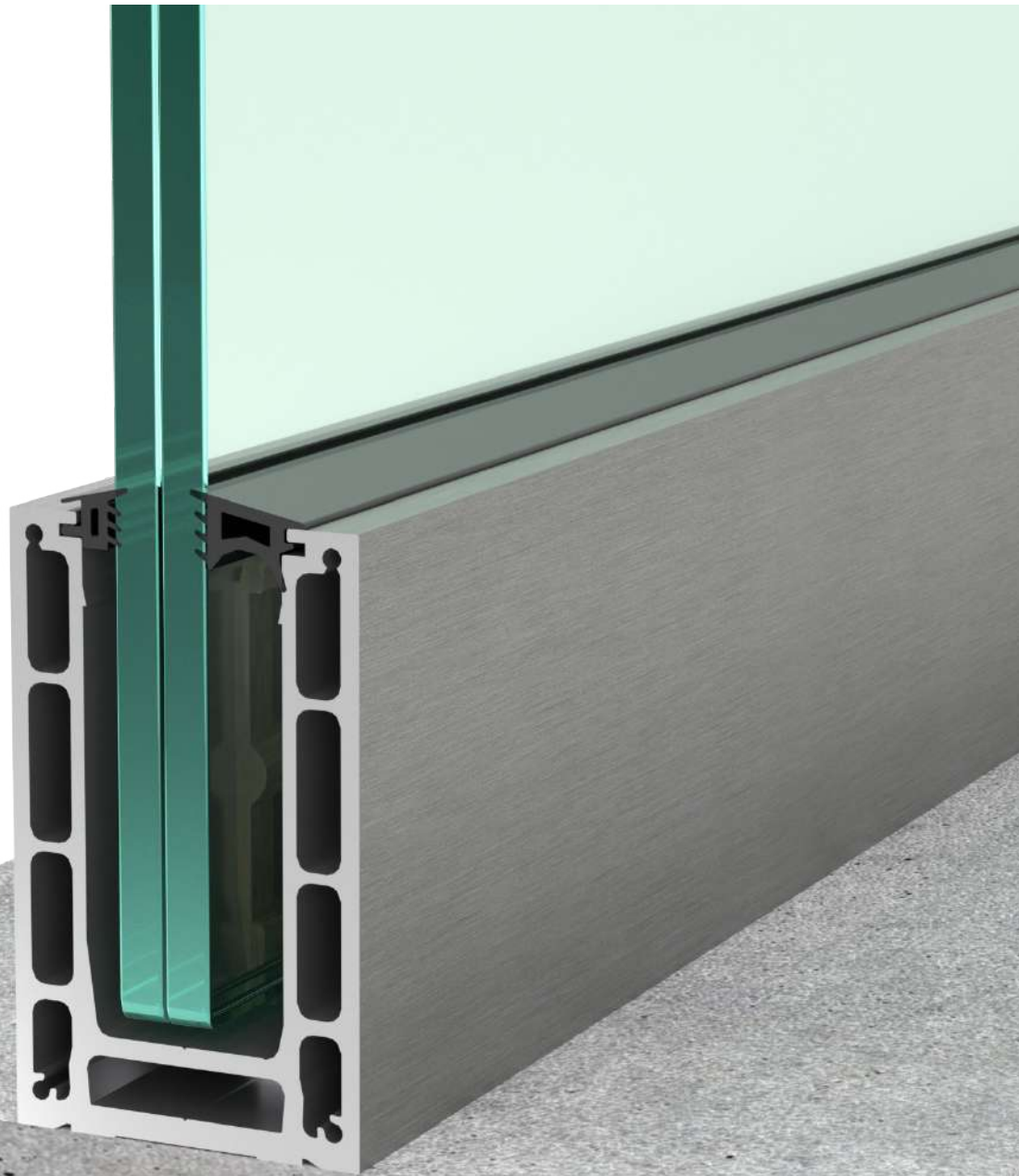
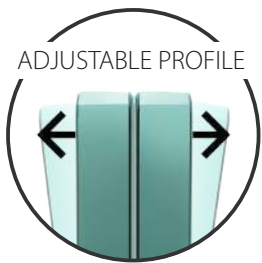
Technology



InstAlign is our newest adjustable system, it features improvements and optimization over the original. Installation is up to 40% faster, it is more simplified and intuitive, it uses the same high-quality durable materials.

# TV 9900

BASE MOUNT



## KEY FEATURES



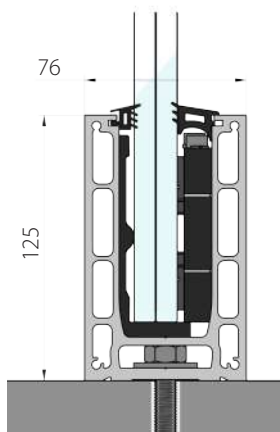
Adjustable profile  
up to 4 kN  
16.76-25,52 mm glass.



Precise alignment from  
the inside of the profile.  
Top and underfloor mount



5m channel  
4 Anchors per meter



Length: 5000mm  
Height: 125mm  
Width: 76mm

Channel: 6.93 kg / meter  
Total: 8.07 kg / meter

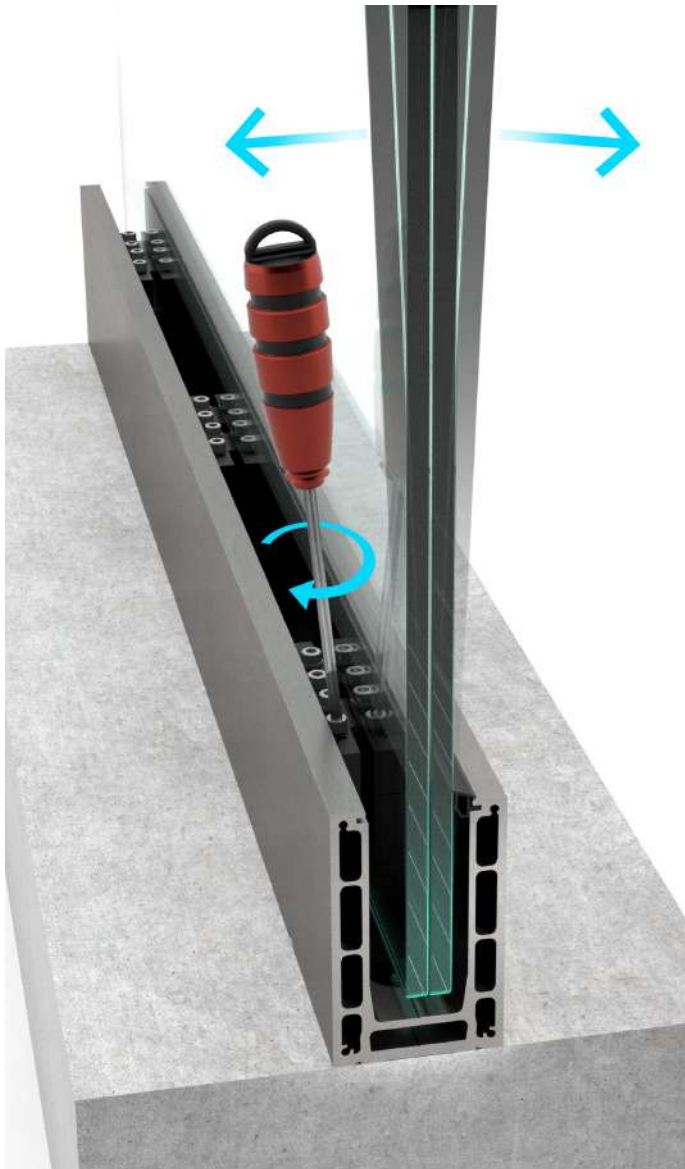
Aluminium: EN AW6060  
Color: Inox, Natural, Raw,  
Custom colour

Mounting anchors:  
M10 / Concrete screw

Glass thickness:  
8.8.2 / 8.8.4  
10.10.2 / 10.10.4  
12.12.2 / 10.10.4

Strength:  
8.8 – up to 3 kN  
10.10 – up to 4 kN

Maximum height:  
8.8 – up to 1300 mm  
10.10 – up to 1500 mm



**TV9900** – is our innovative and most technically advanced glass railing. With over 15 months of development and prototyping, we were able to deliver ease of installation to a whole new level. Precise alignment of the glass is made from the safety of the inside of the balcony with just a hexagon M5 key, all done in seconds with an electric screwdriver. Its strength of up to 4kN using standard tempered laminated glass makes this system among the most desirable solutions on the Market.

Durability is a key priority not only for us but also for our customers. This is why we made the internal moving parts from Inox and we also use a special patented blend of plastic with twice the recommended UV protection. Rubber seals are made from the most durable EPDM and have the highest UV protection. TV9900 is a system that will withstand anything it's subject to like: Wind, Rain, Salt, and UV rays.

**TV9900** successfully covered certification for residential, domestic, and industrial together with heavy human traffic applications. It is proven that the glass railing system is suitable for any usage.

Compatible with:

**InstAlign+**  
Technology



Full certification available on our website [www.tayskvision.com/en/](http://www.tayskvision.com/en/)

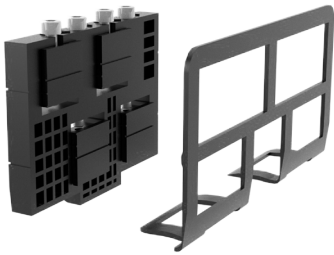
**FINISH OPTIONS :**



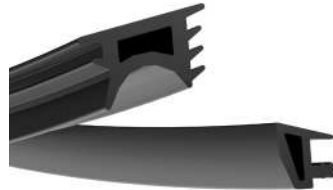
To produce the TV9900 we use the highest quality series of aluminium EN AW 6063, it is well known for its extreme strength and elastic resistance designed to work with 16.76-25.52mm glass.



 **Components**



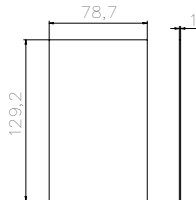
**InstAlign+**  
Adjustable kits for  
glass alignment  
**IAP16** 8+8  
**IAP20** 10+10  
**IAP24** 12+12



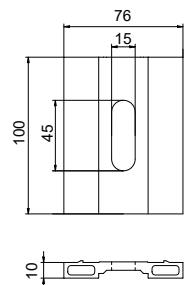
**EPDM RUBBER SEAL**  
**RG-9F** Universal  
**RG-9C** 8 + 8  
**RG-9B** 10 + 10  
**RG-9A** 12 + 12



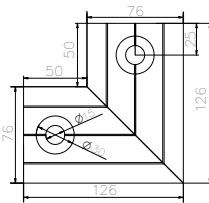
**END COVER**  
Anodized aluminium  
**Code: TV9900K**



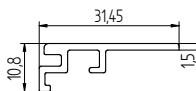
**DRAINAGE PLATE**  
Anodized aluminium  
**Code: TV9900DP**



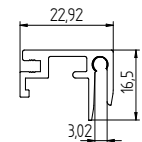
**TV9900 Corner 90°**  
Anodized aluminium.  
**Code: TC9901**



**TRIM**  
Anodized aluminium  
**Code: TV9900I**



**TRIM**  
Anodized aluminium  
**Code: TV9900X3**

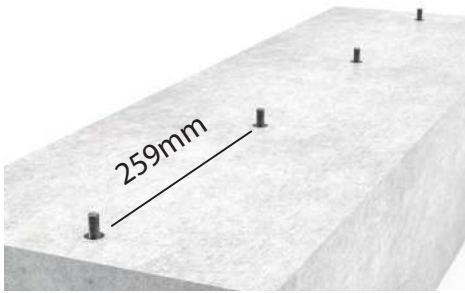


**SCREW DRIVER BIT**  
M5 hexagon ball end  
150mm bit  
**Code: TVM5**



**CONNECTOR PINS**  
**Code: TV4**





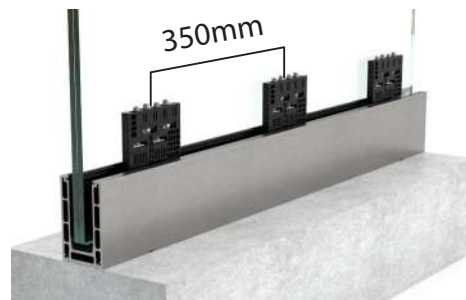
1. Drill, vacuum, insert glue and chemical anchor.



2. Place the profile and secure using a ratchet spanner.



3. Place back rubber seal and back plastic insert and laminated glass.



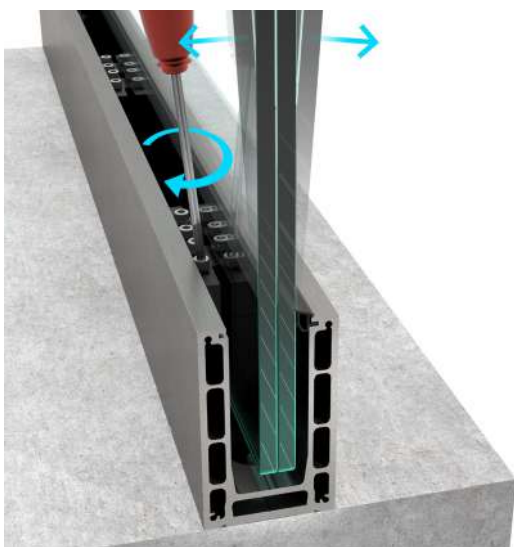
4. Insert the adjustable system and align the glass as shown in the bigger picture below.



5. Place front rubber, front and end covers.



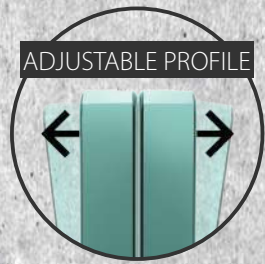
6. Finished look.



Achieving a perfect glass alignment is easy. The two screws without a washer tilt the glass towards you, and the two with a washer tilt it in the opposite direction. When perfect alignment is achieved - tighten all other screws.

# TV 9900S

SIDE MOUNT



## KEY FEATURES



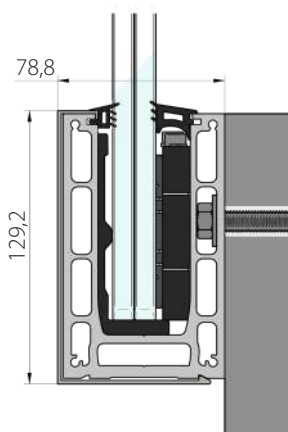
Adjustable profile  
up to 4 kN  
16.76-25,52 mm glass.



Precise alignment from the  
inside of the profile. Side  
mount



5m channel, cover 9901S  
4 Anchors per meter



Length: 5000mm  
Height: 129,2mm  
Width: 78,8mm

Channel: 6.93 kg / meter  
Total: 9.08 kg / meter

Aluminium: EN AW6060  
Color: Inox, Natural, Raw,  
Custom colour

Mounting anchors:  
M10 / Concrete screw

Glass thickness:  
8.8.2 / 8.8.4  
10.10.2 / 10.10.4  
12.12.2 / 12.12.4

Strength:  
8.8 – up to 3 kN  
10.10 – up to 4 kN

Maximum height:  
8.8 – up to 1200 mm  
10.10 – up to 1400 mm



**TV9900S** – is our innovative and most technically advanced glass railing for side mount. With over 15 months of development and prototyping, we were able to deliver ease of installation to a whole new level. Precise alignment of the glass is made from the safety of the inside of the balcony with just a hexagon M5 key, all done in seconds with an electric screwdriver. Its strength of up to 4kN using standard tempered laminated glass makes this system among the most desirable solutions on the Market.

Durability is a key priority not only for us but also for our customers. This is why we made the internal moving parts from Inox and we also use a special patented blend of plastic with twice the recommended UV protection. Rubber seals are made from the most durable EPDM and have the highest UV protection. TV9900S is a system that will withstand anything it's subject to like: Wind, Rain, Salt, and UV rays.

**TV9900S** successfully covered certification for residential, domestic, and industrial together with heavy human traffic applications. It is proven that the glass railing system is suitable for any usage.

Compatible with:

**InstAlign+**  
Technology



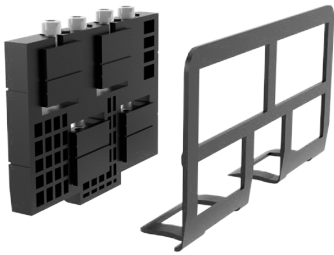
Full certification available on our website  
[www.tayskvision.com/en/](http://www.tayskvision.com/en/)

**FINISH OPTIONS:**

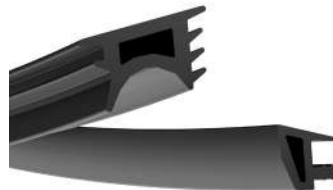


To produce the TV9900S we use the highest quality series of aluminium EN AW 6063, it is well known for its extreme strength and elastic resistance designed to work with 16.76-25.52mm glass.

 **Components**



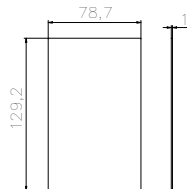
**InstAlign+**  
Adjustable kits for  
glass alignment  
**IAP16** 8+8  
**IAP20** 10+10  
**IAP24** 12+12



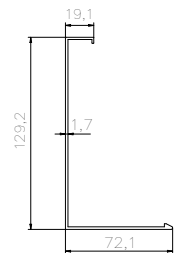
**EPDM RUBBER SEAL**  
**RG-9F** Universal  
**RG-9C** 8 + 8  
**RG-9B** 10 + 10  
**RG-9A** 12 + 12



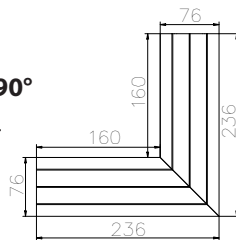
**END COVER**  
Anodized aluminium  
**Code: TV9901SK**



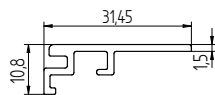
**SIDE COVER**  
Anodized aluminium  
**Code: TV9901S**



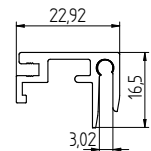
**TV9900S Corner 90°**  
Anodized aluminium.  
**Code: TC9901S**



**TRIM**  
Anodized aluminium  
**Code: TV9900I**



**TRIM**  
Anodized aluminium  
**Code: TV9900X3**



**SCREW DRIVER BIT**  
M5 hexagon ball end  
150mm bit  
**Code: TVM5**



**CONNECTOR PINS**  
**Code: TV4**





1. Drill, vacuum, insert glue and chemical anchor.



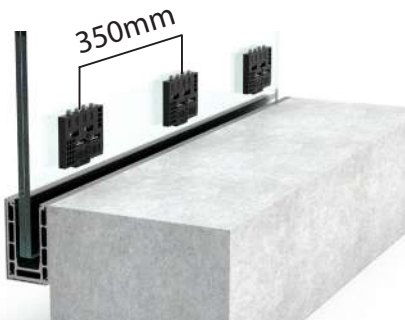
2. Place the profile and secure using a ratchet spanner.



3. Place out-facing lid and rubber seal.



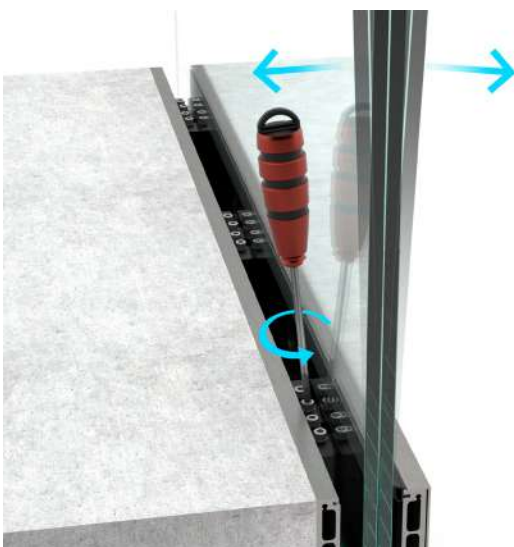
4. Place outer plastic inserts and laminated glass.



5. Insert the adjustable system and align the glass as shown in the bigger picture below.



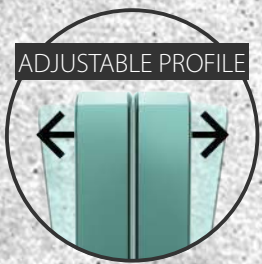
6. Finished look.



Achieving a perfect glass alignment is easy. The two screws without a washer tilt the glass towards you, and the two with a washer tilt it in the opposite direction. When perfect alignment is achieved - tighten all other screws.

# TV9900Y

SIDE MOUNT



## KEY FEATURES



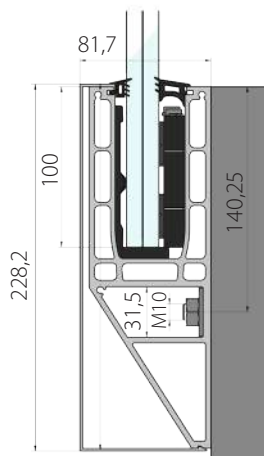
Adjustable profile  
up to 4 kN  
16.76-25.52 mm glass.



Precise alignment from the  
inside of the profile. Side  
mount



5m channel, cover 9901Y  
4 Anchors per meter



Length: 5000mm  
Height: 228,2mm  
Width: 81,7mm

Channel: 8.9 kg / meter  
Total: 11.82 kg / meter

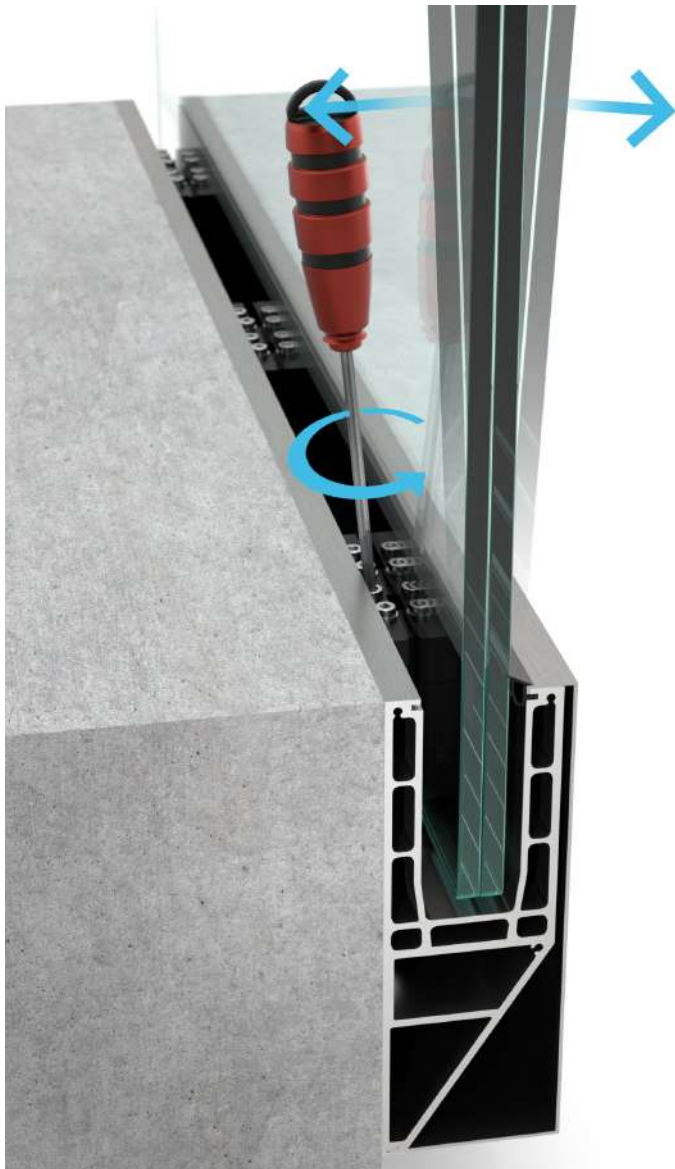
Aluminium: EN AW6063  
Color: Inox, Natural, Raw,  
Custom colour

Mounting anchors:  
M10 / Concrete screw

Glass thickness:  
8.8.2 / 8.8.4  
10.10.2 / 10.10.4  
12.12.2 / 12.12.4

Strength:  
8.8 – up to 3 kN  
10.10 – up to 4 kN

Maximum height:  
8.8 – up to 1200 mm  
10.10 – up to 1300 mm



**TV9900Y** – is our adjustable system based on TV9900 which offers an extended side mount. With its Y-shape it allows installation on the edge of the concrete at floor level. Precise alignment of the glass is made from the safety of the inside of the balcony with just a hexagon M5 key, all done in seconds with an electric screwdriver. Its strength of up to 4kN using standard tempered laminated glass makes this system among the most desirable solutions on the Market.

Durability is a key priority not only for us but also for our customers. This is why we made the internal moving parts from Inox and we also use a special patented blend of plastic with twice the recommended UV protection. Rubber seals are made from the most durable EPDM and have the highest UV protection. TV9900Y is a system that will withstand anything it's subject to like: Wind, Rain, Salt, and UV rays.

**TV9900Y** successfully covered certification for residential, domestic, and industrial together with heavy human traffic applications. It is proven that the glass railing system is suitable for any usage.

Compatible with:

**InstAlign+**  
Technology



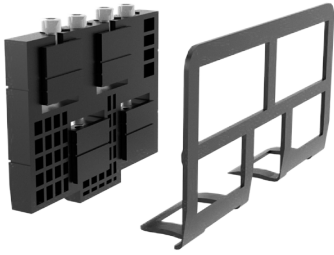
Full certification available on our website  
[www.tayskvision.com/en/](http://www.tayskvision.com/en/)

**FINISH OPTIONS:**

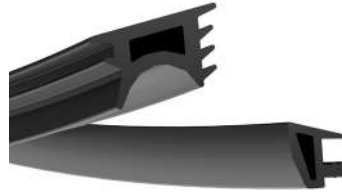


To produce the TV9900Y we use the highest quality series of aluminium EN AW 6063, it is well known for its extreme strength and elastic resistance designed to work with 16.76-25.52mm glass.

 **Components**



**InstAlign+**  
Adjustable kits for  
glass alignment  
**IAP16** 8+8  
**IAP20** 10+10  
**IAP24** 12+12

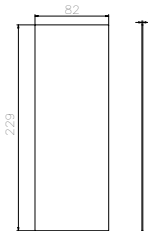


**EPDM RUBBER SEAL**

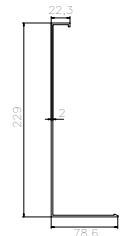
**RG-9F** Universal  
**RG-9C** 8 + 8  
**RG-9B** 10 + 10  
**RG-9A** 12 + 12



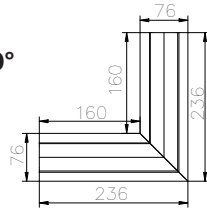
**END COVER**  
Anodized aluminium  
**Code: TV9901YK**



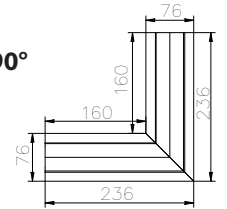
**SIDE COVER**  
Anodized aluminium  
**Code: TV9901Y**



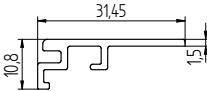
**TV9900Y Corner 90°**  
Anodized aluminium.  
**Code: TC9901Y**



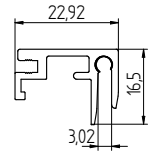
**TV9900Y Corner 90°**  
Anodized aluminium.  
**Code: TC9902Y**



**TRIM**  
Anodized aluminium  
**Code: TV9900I**



**TRIM**  
Anodized aluminium  
**Code: TV9900X3**

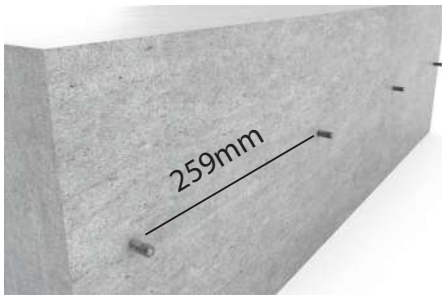


**SCREW DRIVER BIT**  
M5 hexagon ball end  
150mm bit  
**Code: TVM5**



**CONNECTOR PINS**  
**Code: TV4**





1. Drill, vacuum, insert glue and chemical anchor.



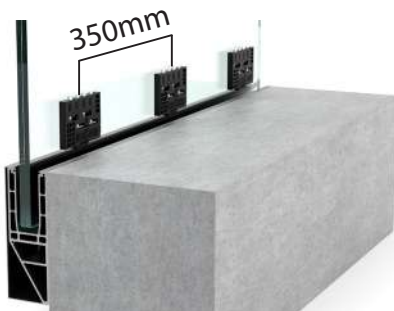
2. Place the profile and secure using a ratchet spanner



3. Place out-facing lid and rubber seal.



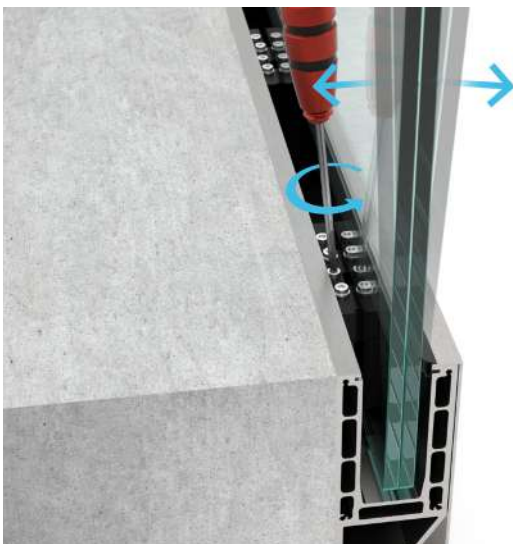
4. Place outer plastic inserts and laminated glass.



5. Insert the adjustable system and align the glass as shown in the bigger picture below.



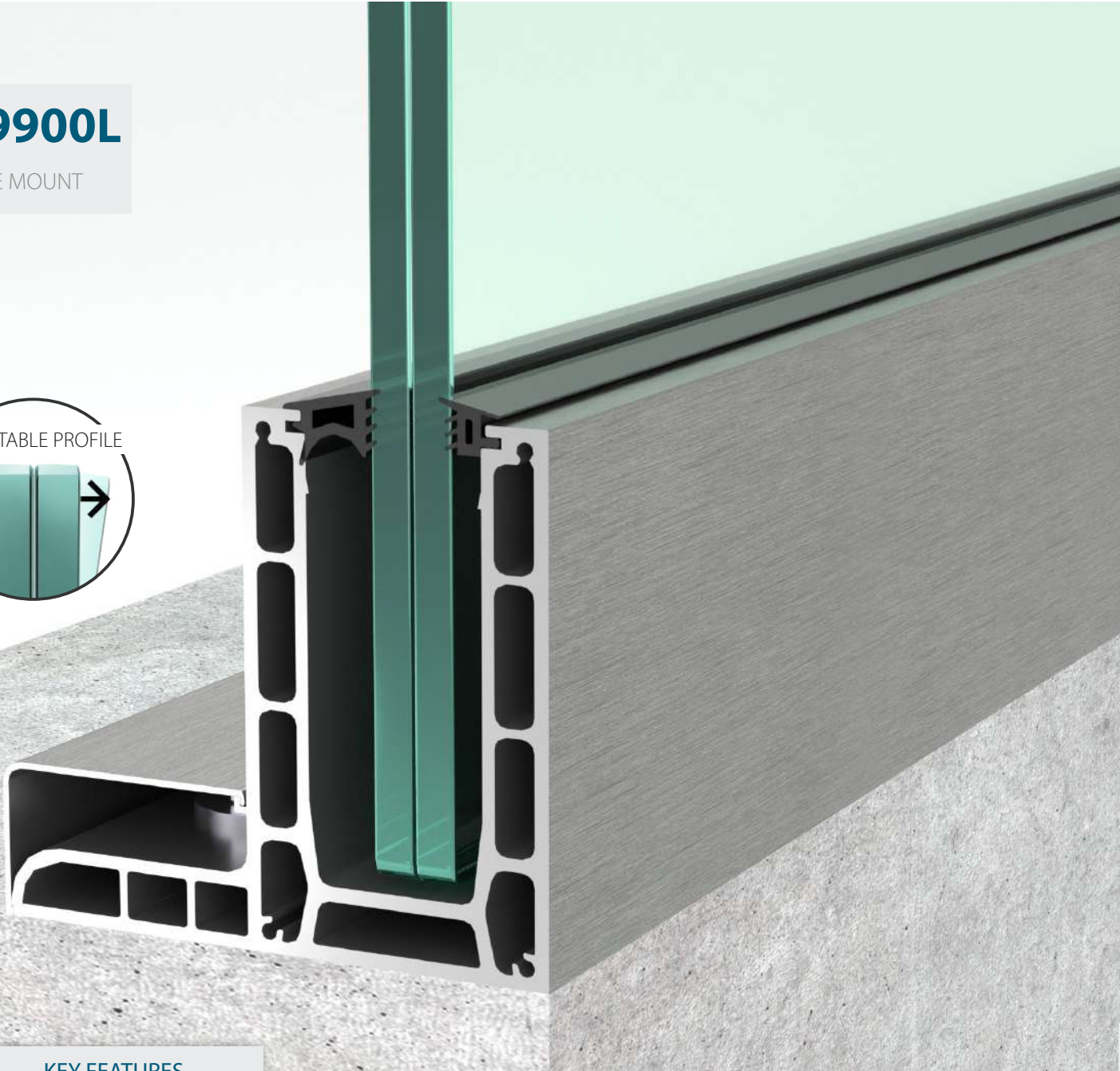
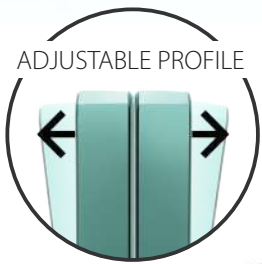
6. Finished look.



Achieving a perfect glass alignment is easy. The two screws without a washer tilt the glass towards you, and the two with a washer tilt it in the opposite direction. When perfect alignment is achieved - tighten all other screws.

# TV9900L

BASE MOUNT



## KEY FEATURES



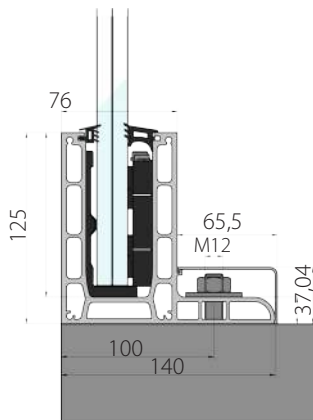
Adjustable profile  
up to 4 kN  
16.76-25,52 mm glass.



Precise alignment from the  
inside of the profile.  
Top and underfloor mount



5m channel, cover 9901L  
4 Anchors per meter



Length: 5000mm  
Height: 125mm  
Width: 140mm

Channel: 7,47 kg / meter  
Total: 9.02 kg / meter

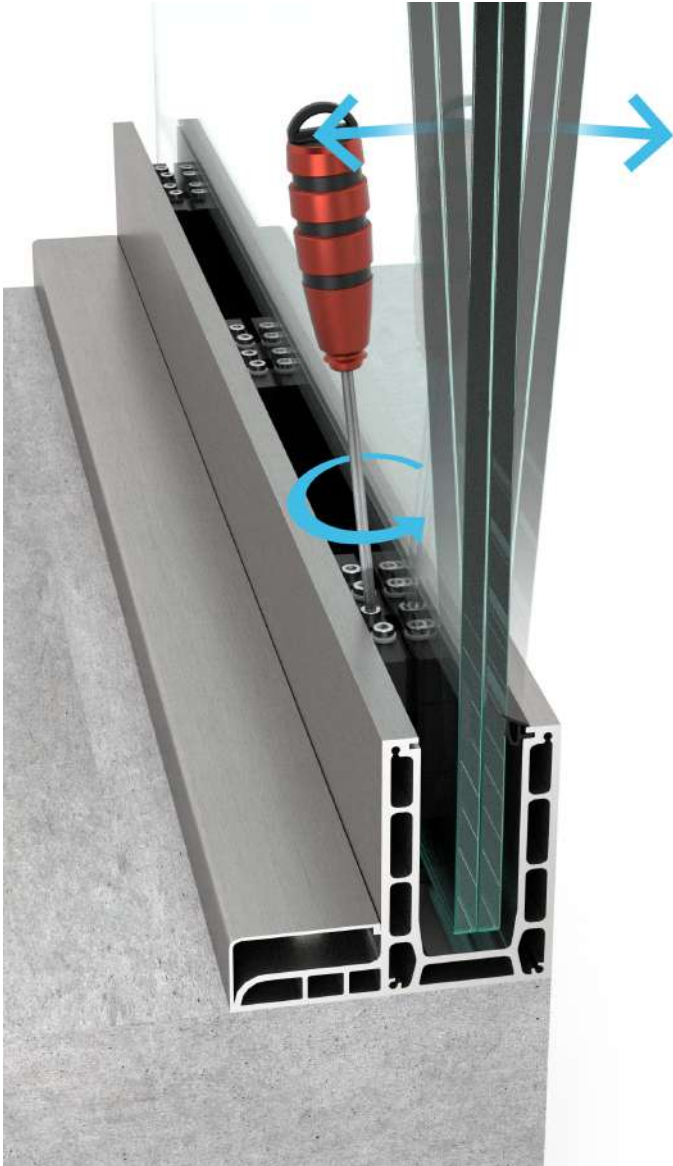
Aluminium: EN AW6060  
Color: Inox, Natural, Raw,  
Custom colour

Mounting anchors:  
M10 / Concrete screw

Glass thickness:  
8.8.2 / 8.8.4  
10.10.2 / 10.10.4  
12.12.2 / 12.12.4

Strength:  
8.8 – up to 3 kN  
10.10 – up to 4 kN

Maximum height:  
8.8 – up to 1200 mm  
10.10 – up to 1300 mm



**TV9900L** – is our adjustable system based on TV9900 which offers great flexibility and usage. With its L-shape it allows installation on the edge of the concrete. The system can be integrated into the floor. TV9900L can also be used as a glass awning. Precise alignment of the glass is made from the safety of the inside of the balcony with just a hexagon M5 key, all done in seconds with an electric screwdriver. Its strength of up to 4kN using standard tempered laminated glass makes this system among the most desirable solutions on the Market.

Durability is a key priority not only for us but also for our customers. This is why we made the internal moving parts from Inox and we also use a special patented blend of plastic with twice the recommended UV protection. Rubber seals are made from the most durable EPDM and have the highest UV protection. TV9900L is a system that will withstand anything it's subject to like: Wind, Rain, Salt, and UV rays.

**TV9900L** successfully covered certification for residential, domestic, and industrial together with heavy human traffic applications. It is proven that the glass railing system is suitable for any usage.

Compatible with:

**InstAlign+**  
Technology



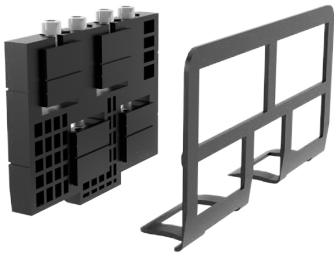
Full certification available on our website  
[www.tayskvision.com/en/](http://www.tayskvision.com/en/)

**FINISH OPTIONS:**

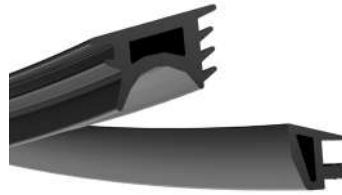


To produce the TV9900L we use the highest quality series of aluminium EN AW 6063, it is well known for its extreme strength and elastic resistance designed to work with 16.76-25.52mm glass.

 **Components**



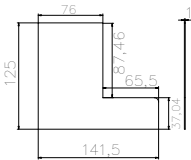
**InstAlign+**  
Adjustable kits for  
glass alignment  
**IAP16** 8+8  
**IAP20** 10+10  
**IAP24** 12+12



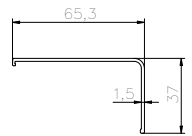
**EPDM RUBBER SEAL**  
**RG-9F** Universal  
**RG-9C** 8 + 8  
**RG-9B** 10 + 10  
**RG-9A** 12 + 12



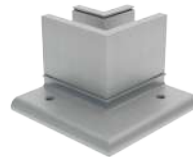
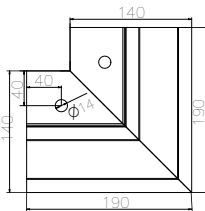
**END COVER**  
Anodized aluminium  
**Code: TV9901LK**



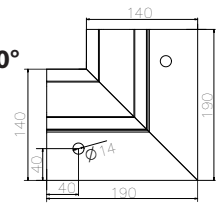
**SIDE COVER**  
Anodized aluminium  
**Code: TV9901L**



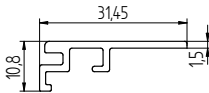
**TV9900L Corner 90°**  
Anodized aluminium.  
**Code: TC9901L**



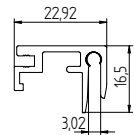
**TV9900L Corner 90°**  
Anodized aluminium.  
**Code: TC9902L**



**TRIM**  
Anodized aluminium  
**Code: TV9900I**



**TRIM**  
Anodized aluminium  
**Code: TV9900X3**

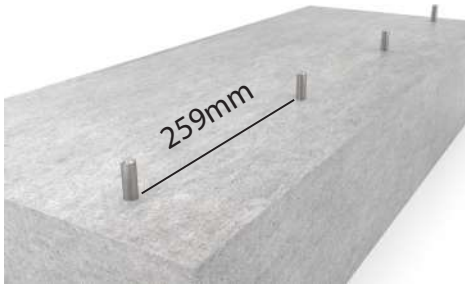


**SCREW DRIVER BIT**  
M5 hexagon ball end  
150mm bit  
**Code: TVM5**



**CONNECTOR PINS**  
**Code: TV4**





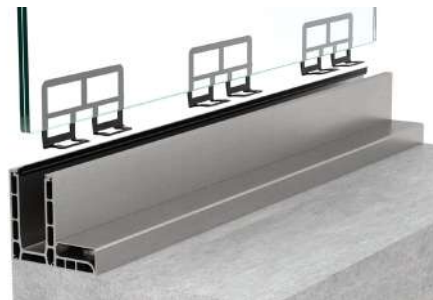
1. Drill, vacuum, insert glue and chemical anchor.



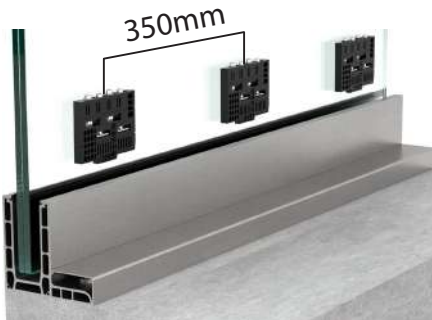
2. Place the profile and secure using a ratchet spanner.



3. Place out-facing lid and rubber seal.



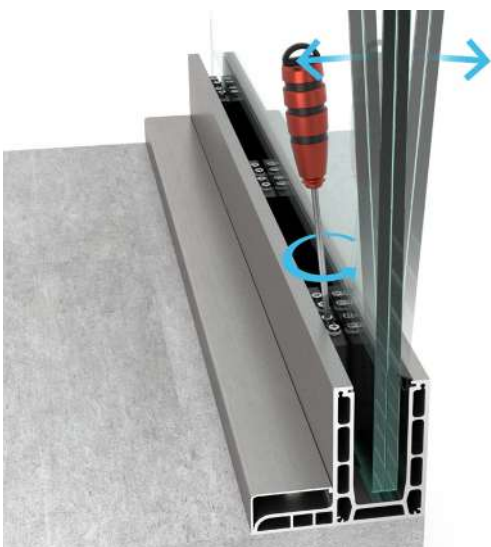
4. Place outer plastic inserts and laminated glass.



5. Insert the adjustable system and align the glass as shown in the bigger picture below.



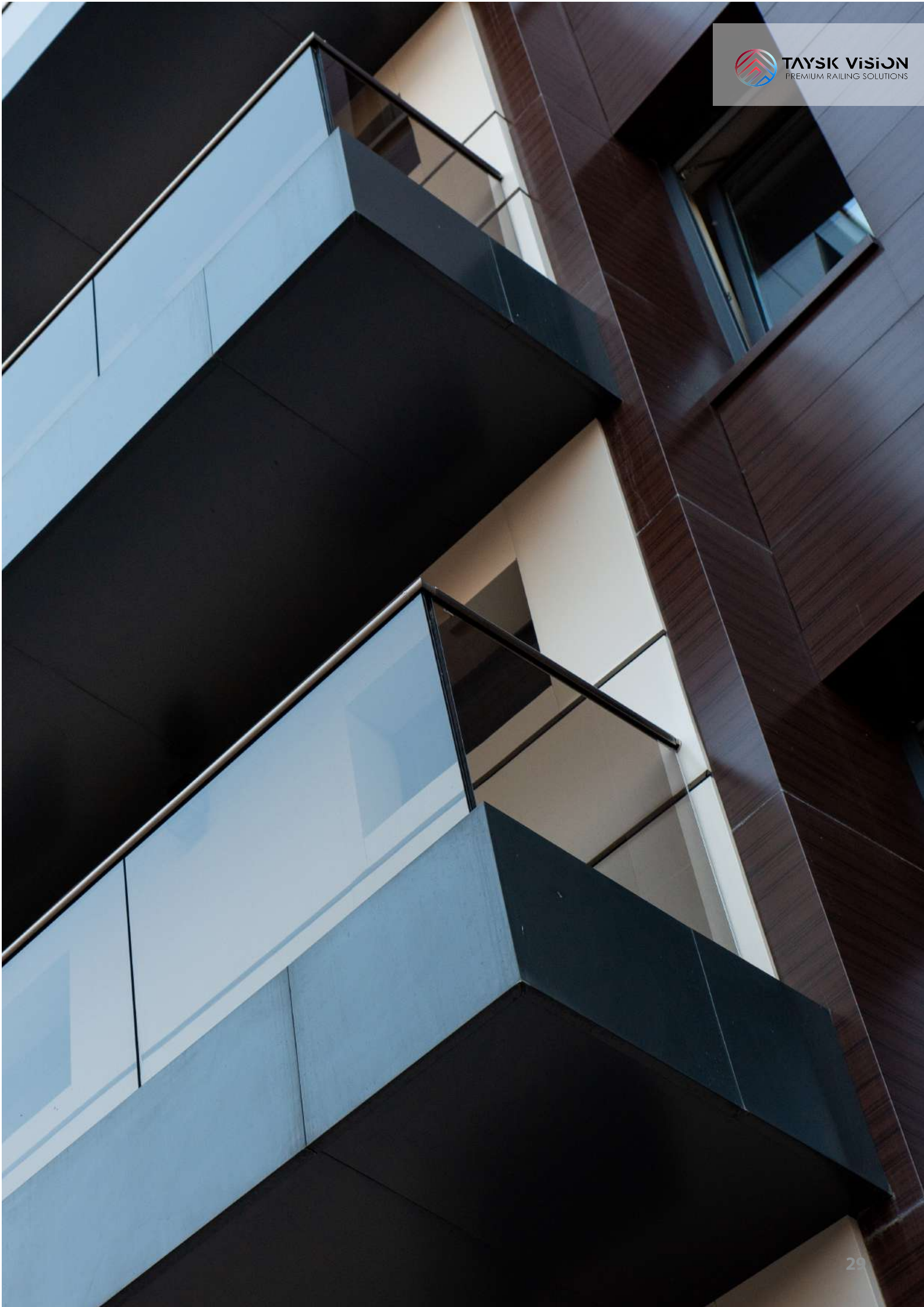
6. Finished look.



Achieving a perfect glass alignment is easy. The two screws without a washer tilt the glass towards you, and the two with a washer tilt it in the opposite direction. When perfect alignment is achieved - tighten all other screws.



TV 9900





# TV 8900

BASE MOUNT



## KEY FEATURES



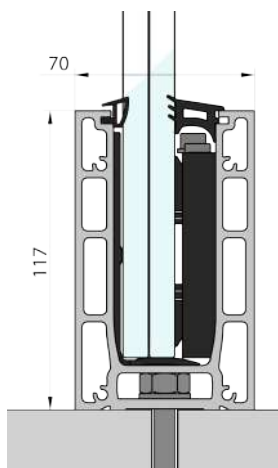
Adjustable profile  
up to 3 kN  
12.76-21,52 mm glass.



Precise alignment from the  
inside of the profile.  
Top and underfloor mount.



5m channel  
4 Anchors per meter



Length: 5000mm  
Height: 117mm  
Width: 70mm

Channel: 5.47 kg / meter  
Total: 6.41 kg / meter

Aluminium: EN AW6060  
Color: Inox, Natural, Raw,  
Custom colour

Mounting anchors:  
M10 / Concrete screw

Glass thickness:  
6.62 / 6.62  
8.82 / 8.84  
10.10.2 / 10.10.4

Strength:  
8.8 – up to 3 kN  
10.10 – up to 3 kN

Maximum height:  
8.8 – up to 1200 mm  
10.10 – up to 1300 mm





**TV8900** – is our innovative and most technically advanced glass railing. With over 15 months of development and prototyping, we were able to deliver ease of installation to a whole new level. Precise alignment of the glass is made from the safety of the inside of the balcony with just a hexagon M5 key, all done in seconds with an electric screwdriver. Its strength of up to 2kN using standard tempered laminated glass makes this system among the most desirable solutions on the Market.

Durability is a key priority not only for us but also for our customers. This is why we made the internal moving parts from Inox and we also use a special patented blend of plastic with twice the recommended UV protection. Rubber seals are made from the most durable EPDM and have the highest UV protection.

**TV8900** is a system that will withstand anything it's subject to like: Wind, Rain, Salt, and UV rays.

**TV8900** successfully covered certification for residential, domestic, and industrial together with heavy human traffic applications. It is proven that the glass railing system is suitable for any usage.

Compatible with:

**InstAlign**  
Technology



Full certification available on our website  
[www.tayskvision.com/en/](http://www.tayskvision.com/en/)

ASSEMBLED / DISASSEMBLED



To produce the TV8900 we use the highest quality series of aluminium EN AW 6063, it is well known for its extreme strength and elastic resistance designed to work with 12.76-21.52mm glass.



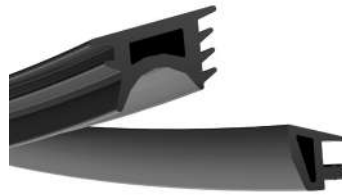
**Components**



**InstAlign**

Adjustable kits for glass alignment

- IA12** 6 + 6
- IA16** 8 + 8
- IA20** 10 + 10



**EPDM RUBBER SEAL**

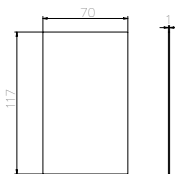
- RG-9F** Universal
- RG-9C** 6 + 6
- RG-9B** 8 + 8
- RG-9A** 10 + 10



**END COVER**

Anodized aluminium

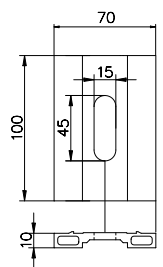
**Code: TV8901K**



**DRAINAGE PLATE**

Anodized aluminium

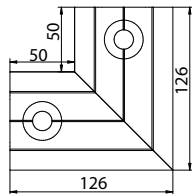
**Code: TV8900DP**



**TV8900 Corner 90°**

Anodized aluminium.

**Code: TC8901**



**SCREW DRIVER BIT**

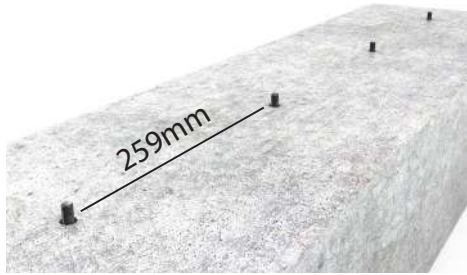
M5 hexagon ball end  
150mm bit

**Code: TVM5**



**CONNECTOR PINS**

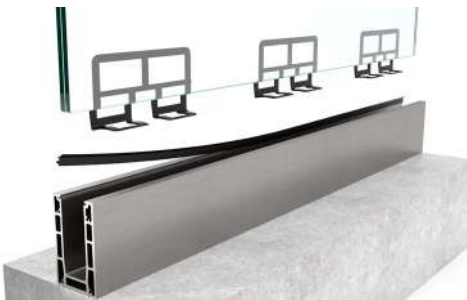
**Code: TV4**



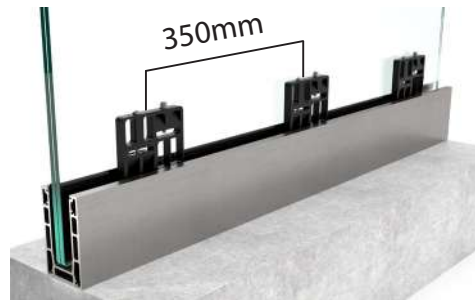
1. Drill, vacuum, insert glue and chemical anchor.



2. Place the profile and secure using a ratchet spanner.



3. Place back rubber seal, back plastic insert and laminated glass.



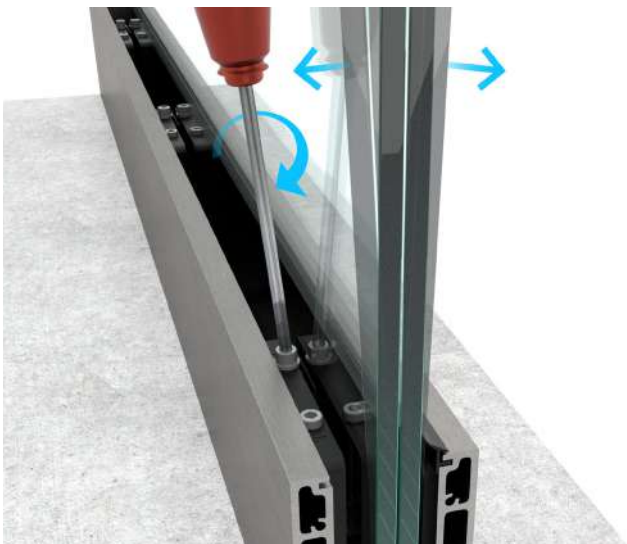
4. Insert the adjustable system and align the glass as shown in the bigger picture below.



5. Place front rubber seal and front and end covers.



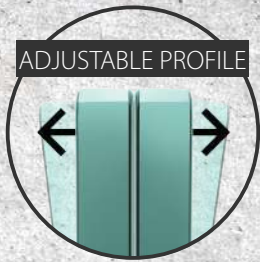
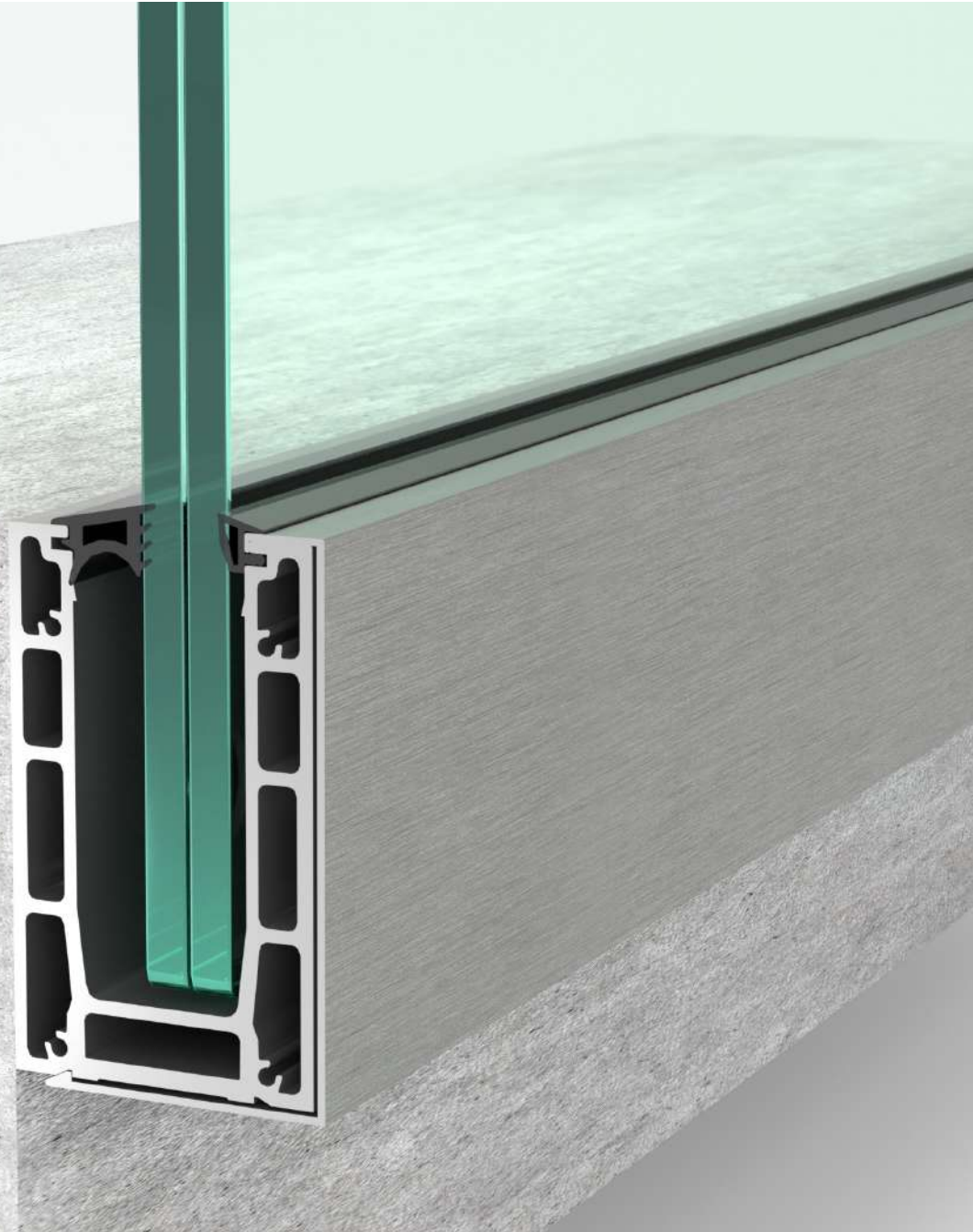
6. Finished look.



To achieve perfect alignment use the two screws. First one tilts the glass towards you, the second opposite direction. When perfect alignment is achieved secure both screws.

# TV 8900S

SIDE MOUNT



## KEY FEATURES



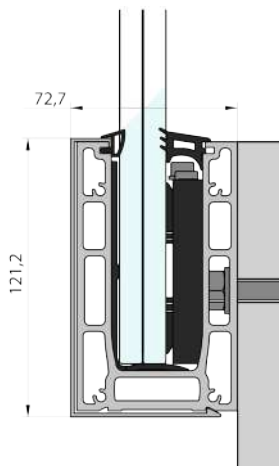
Adjustable profile  
up to 3 kN  
12.76-21.52 mm glass.



Precise alignment from the  
inside of the profile. Side  
mount



5m channel, cover 8901S  
4 Anchors per meter



Length: 5000mm  
Height: 121,5mm  
Width: 72,7mm

Channel: 5.47 kg / meter  
Total: 7.35 / meter

Aluminium: EN AW6060  
Color: Inox, Natural, Raw,  
Custom colour

Mounting anchors:  
M10 / Concrete screw

Glass thickness:  
6.6.2 / 6.6.4  
8.8.2 / 8.8.4  
10.10.2 / 10.10.4

Strength:  
8.8 – up to 2 kN  
10.10 – up to 2 kN

Maximum height:  
8.8 – up to 1200 mm  
10.10 – up to 1300 mm





**TV8900S** – is our innovative and most technically advanced glass railing. With over 15 months of development and prototyping, we were able to deliver ease of installation to a whole new level. Precise alignment of the glass is made from the safety of the inside of the balcony with just a hexagon M5 key, all done in seconds with an electric screwdriver. Its strength of up to 2kN using standard tempered laminated glass makes this system among the most desirable solutions on the Market.

Durability is a key priority not only for us but also for our customers. This is why we made the internal moving parts from Inox and we also use a special patented blend of plastic with twice the recommended UV protection. Rubber seals are made from the most durable EPDM and have the highest UV protection. TV8900 is a system that will withstand anything it's subject to like: Wind, Rain, Salt, and UV rays.

**TV8900S** successfully covered certification for residential, domestic, and industrial together with heavy human traffic applications. It is proven that the glass railing system is suitable for any usage.

Compatible with:

**InstAlign**  
Technology



Full certification available on our website  
[www.tayskvision.com/en/](http://www.tayskvision.com/en/)

ASSEMBLED / DISASSEMBLED



To produce the TV8900S we use the highest quality series of aluminium EN AW 6063, it is well known for its extreme strength and elastic resistance designed to work with 12.76-21.52mm glass.



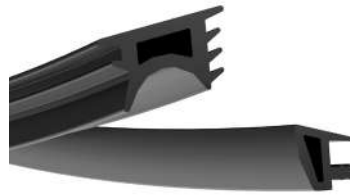
**Components**



**InstAlign**

Adjustable kits for glass alignment

- K99-16** 6 + 6
- K99-20** 8 + 8
- K99-24** 10 + 10



**EPDM RUBBER SEAL**

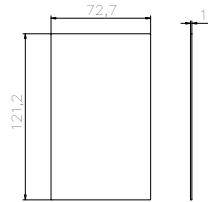
- RG-90F** Universal
- RG-9C** 6 + 6
- RG-9B** 8 + 8
- RG-9A** 10 + 10



**END COVER**

Anodized aluminium

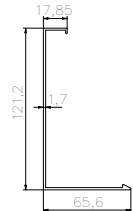
**Code: TV8901SK**



**SIDE COVER**

Anodized aluminium

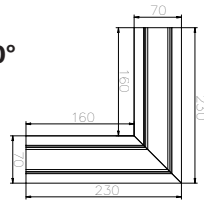
**Code: TV8901S**



**TV8900S Corner 90°**

Anodized aluminium.

**Code: TC8901S**



**SCREW DRIVER BIT**

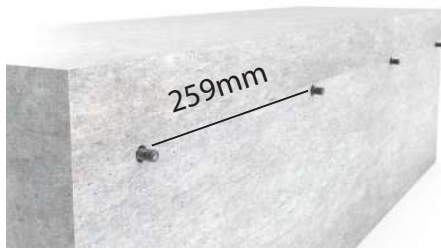
M5 hexagon ball end  
150mm bit

**Code: TVM5**



**CONNECTOR PINS**

**Code: TV4**



1. Drill, vacuum, insert glue and chemical anchor.



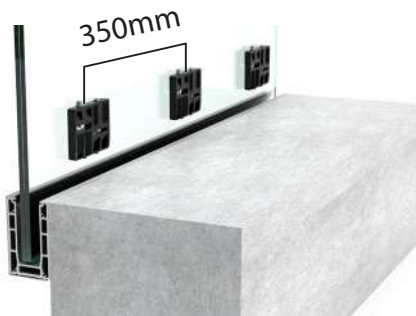
2. Place the profile and secure using a ratchet spanner.



3. Place out-facing lid and rubber seal.



4. Place outer plastic insert and laminated glass.



5. Insert the adjustable system and align the glass as shown in the bigger picture below.



6. Finished look.



To achieve perfect alignment use the two screws. First one tilts the glass towards you, the second opposite direction. When perfect alignment is achieved secure both screws.



TV 7600







# GLASS FIXING SYSTEMS

Compatible with:

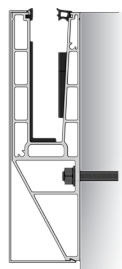


**Series : TV7600/TV7500/TV6500/TV4500**

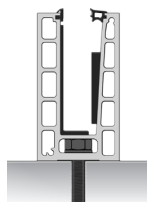
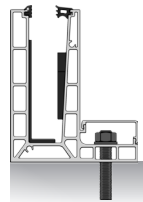
TV7600



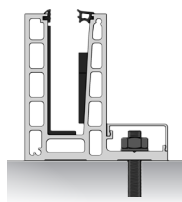
TV7600Y



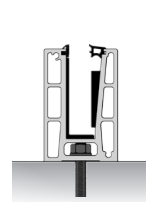
TV7600L



TV6500



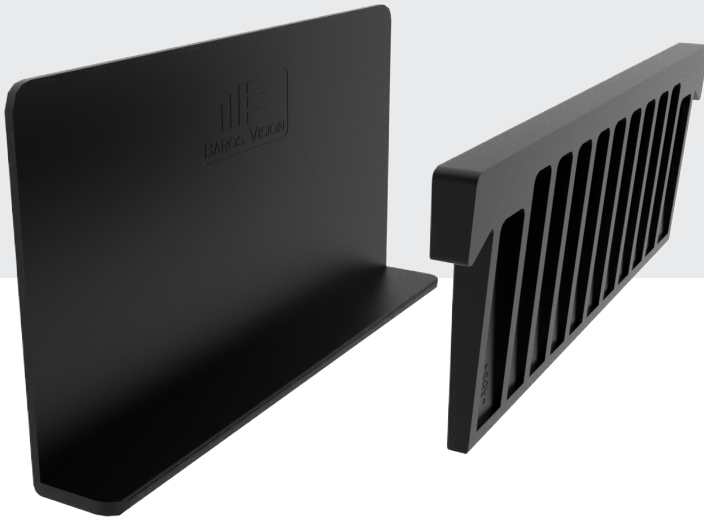
TV6500L



TV4500



**NEW**



# WedgeFix L

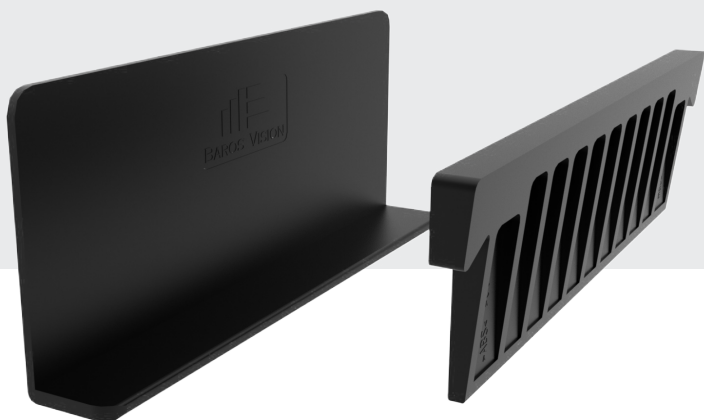
Technology

WedgeFix L is our glass fixation by use of plastic wedges. This is a popular design but improved with the added:

**UV protection** - our wedges will much longer last when exposed to UV rays, humidity, and salt.

**Anti-shock protection** - reduces the change of glass breakage caused by pressure while fixing the glass ...

**NEW**



# WedgeFix S

Technology

... **Anti-pullout protection** - regardless of the internal or external, static or dynamic forces our wedges offer maximum grip and remain inside the profile holding the glass.



# TV7600

BASE MOUNT



## KEY FEATURES



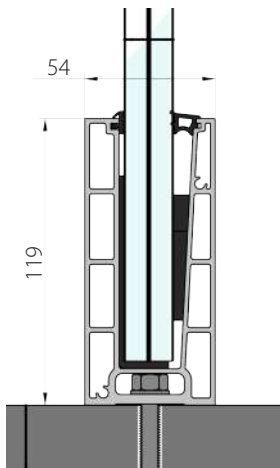
Up to 2 kN  
16.3-21,52 mm glass.  
Simplified installation.



Uses a wedge  
to secure the glass.  
Top and underfloor mount.



5m channel  
4 Anchors per meter



Length: 5000mm  
Height: 119mm  
Width: 54mm

Channel: 3.73 kg / meter  
Total: 4.23 kg / meter

Aluminium: EN AW6060  
Color: Inox, Natural, Raw,  
Custom colour

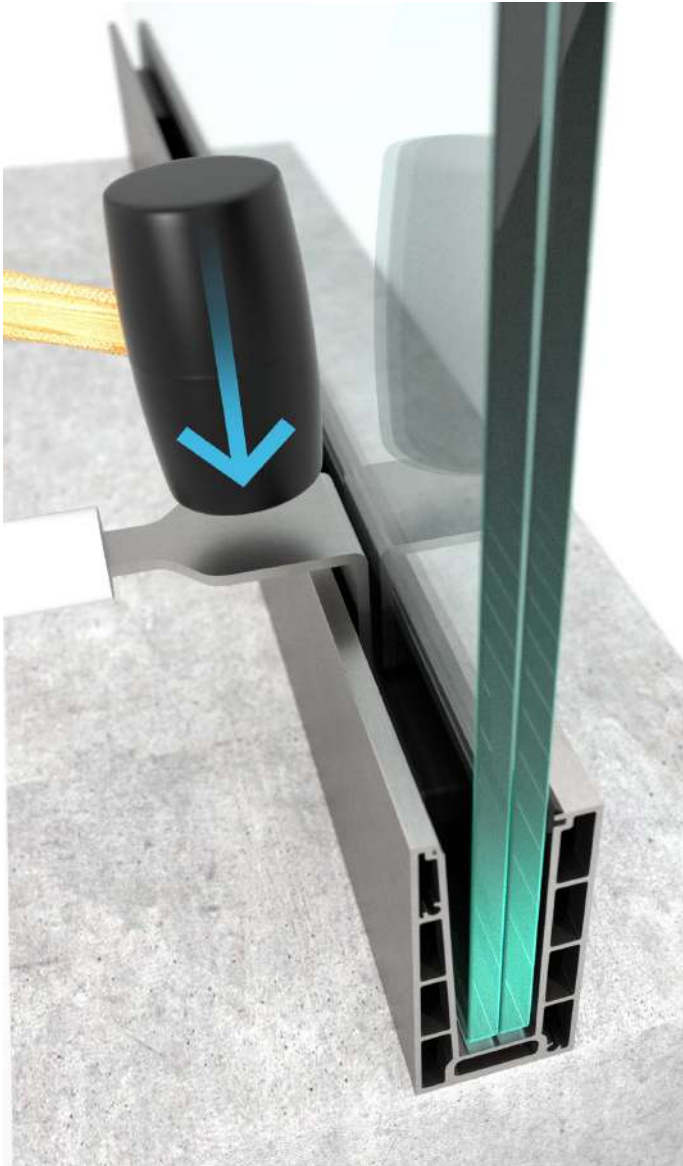
Mounting anchors:  
M8 / Concrete screw

Glass thickness:  
6.6.2 / 6.6.4  
8.8.2 / 8.8.4  
10.10.2 / 10.10.4

Strength:  
6.6 – up to 2 kN  
8.8 – up to 2 kN  
10.10 – up to 3 kN

Maximum Height:  
8.8 – up to 1100 mm  
10.10 – up to 1100 mm





**TV7600** is our newest in-house designed glass railing system for top mount. This budget-oriented system provides a sleek finish, ease of installation, and requires minimum maintenance. The glass is secured in seconds using wedges and a wedge inserter. The wedges and profile design are ridged to remove the possibility of loose wedges which is a common problem with this type of design. You can rest assured that even after heavy use the system will keep its integrity.

Durability is a high priority for us and for our customers, this is why we made the internal parts from special plastic with UV protection. The rubber seals made from EPDM are perfectly suited for exposure to the sun thanks to their UV protection. TV7600 can be used for any meteorological conditions. Every part of this system has been designed to ease the installation and to reduce the risk factors associated with it.

With our experience in the field, we know the technical challenges that can arise and so we designed the system with extra care. **TV7600** successfully covers all residential and domestic applications. With certification for up to 2kN.

Compatible with:

**WedgeFix L**  
Technology



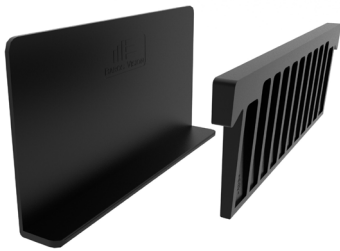
Full certification available on our website  
[www.tayskvision.com/en/](http://www.tayskvision.com/en/)

ASSEMBLED / DISASSEMBLED



To produce the TV7600 we use the highest quality series of aluminium EN AW 6063, it is well known for its extreme strength and elastic resistance designed to work with 12.76-21.52mm glass.

 **Components**



**WedgeFix L**

Plastic inserts  
Front and back

- WFL12** 6 + 6
- WFL16** 8 + 8
- WFL20** 10 + 10



**EPDM RUBBER SEAL**

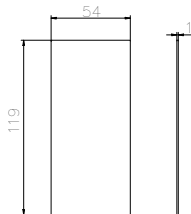
- RG-5F** Universal
- RG-5C** 6 + 6
- RG-5B** 8 + 8
- RG-5A** 10 + 10



**END COVER**

Anodized aluminium

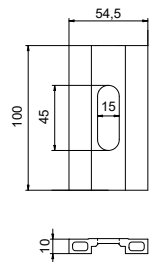
**Code: TV7601K**



**DRAINAGE PLATE**

Anodized aluminium

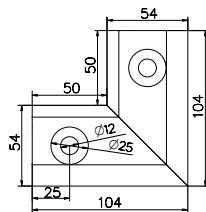
**Code: TV7600DP**



**TV7600 Corner 90° (inside)**

Anodized aluminium.

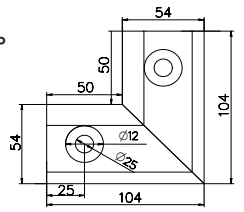
**Code: TC7601**



**TV7600 Corner 90° (outside)**

Anodized aluminium.

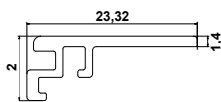
**Code: TC7602**



**TRIM**

Anodized aluminium

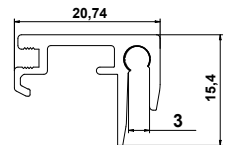
**Code: TV7600I**



**TRIM**

Anodized aluminium

**Code: TV7600X3**



**WEDGE INSERTER**

Wedge inserter

**Code: TVM5**



**WEDGE REMOVER**

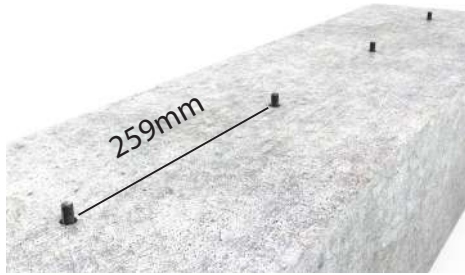
Wedge remover

**Code: TV30**



**CONNECTOR PINS**

**Code: TV4**



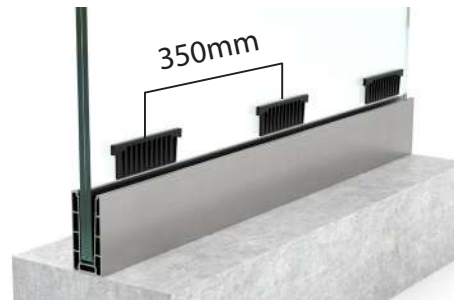
1. Drill, vacuum, insert glue and chemical anchor.



2. Place the profile and secure using a ratchet spanner.



3. Place back rubber seal, back plastic inserts and laminated glass.



4. Insert WedgeFix system and secure the glass as shown on bigger picture below.



5. Place front rubber seal with front and end covers.



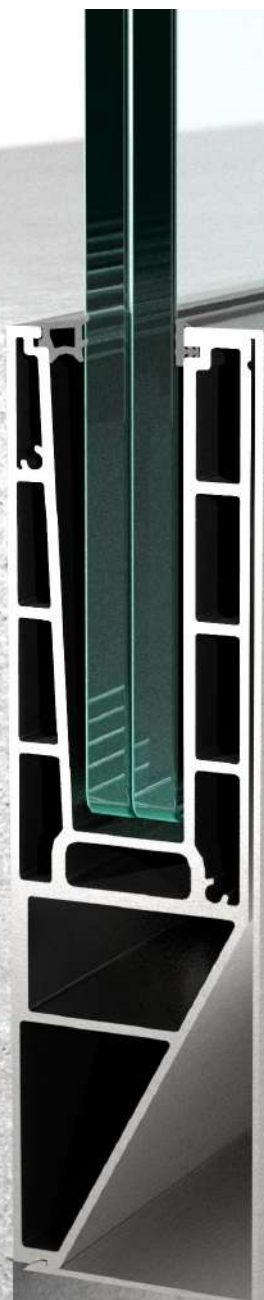
6. Finished look.



Once all wedges are in place, use wedge inserter and a hammer to insert them until the glass is locked.

# TV7600Y

BASE MOUNT



## KEY FEATURES



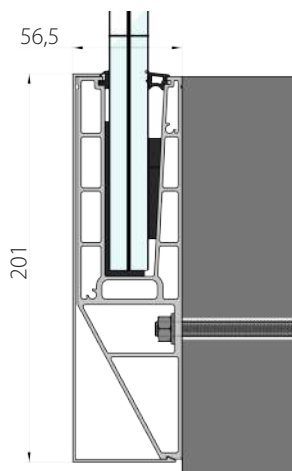
Up to 2 kN  
16.3-21,52 mm glass.  
Simplified installation.



Uses a wedge  
to secure the glass.  
Side mount.



5m channel, cover 7601Y  
4 Anchors per meter



Length: 5000mm  
Height: 201 mm  
Width: 56,5 mm

Channel: 5.06 kg / meter  
Total: 6.9 kg / meter

Aluminium: EN AW6060  
Color: Inox, Natural, Raw,  
Custom colour

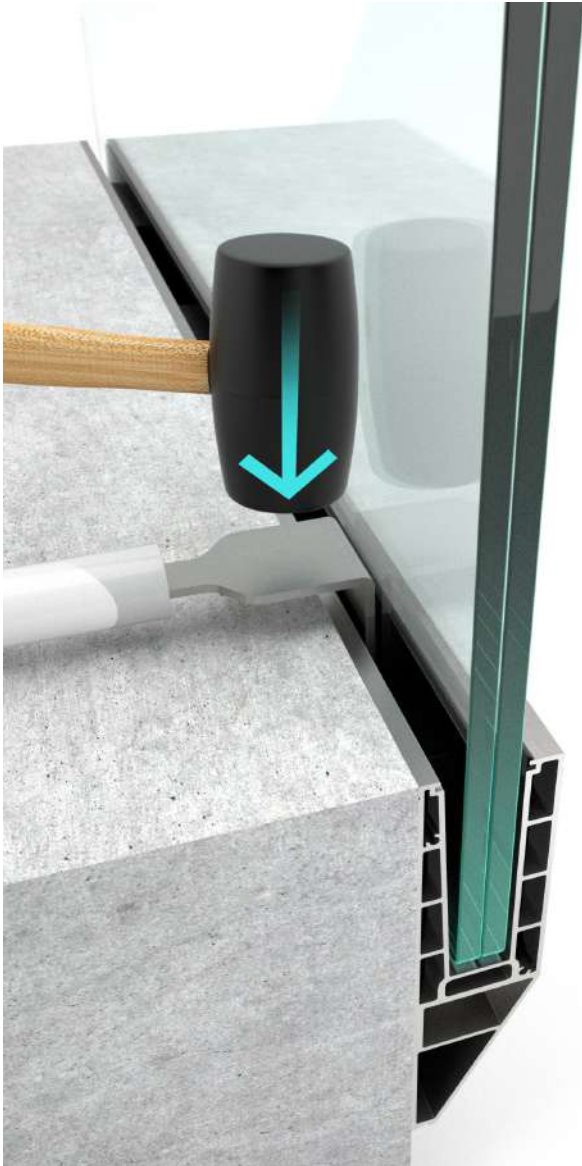
Mounting anchors:  
M8 / Concrete screw

Glass thickness:  
6.6.2 / 6.6.4  
8.8.2 / 8.8.4  
10.10.2 / 10.10.4

Strength:  
8.8 – up to 2 kN  
10.10 – up to 3 kN

Maximum Height:  
8.8 – up to 1100 mm  
10.10 – up to 1100 mm





**TV7600Y** is our newest in-house designed Y-shaped glass railing system for side mount. This budget-oriented system provides a sleek finish, ease of installation, and requires minimum maintenance. The glass is secured in seconds using wedges and a wedge inserter. The wedges and profile design are ridged to remove the possibility of loose wedges which is a common problem with this type of design. You can rest assured that even after heavy use the system will keep its integrity.

Durability is a high priority for us and for our customers, this is why we made the internal parts from special plastic with UV protection. The rubber seals made from EPDM are perfectly suited for exposure to the sun thanks to their UV protection. TV7600Y can be used for any meteorological conditions. Every part of this system has been designed to ease the installation and to reduce the risk factors associated with it.

With our experience in the field, we know the technical challenges that can arise and so we designed the system with extra care. **TV7600Y** successfully covers all residential and domestic applications. With certification for up to 2kN.

Compatible with:

**WedgeFix L**  
Technology



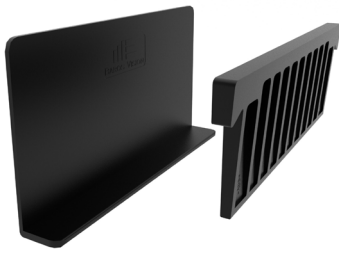
Full certification available on our website  
[www.tayskvision.com/en/](http://www.tayskvision.com/en/)

ASSEMBLED / DISASSEMBLED



To produce the TV7600Y we use the highest quality series of aluminium EN AW 6063, it is well known for its extreme strength and elastic resistance designed to work with 12.76-21.52mm glass.

 **Components**



**WedgeFix L**

Plastic inserts  
Front and back

- WFL12** 6 + 6
- WFL16** 8 + 8
- WFL20** 10 + 10



**EPDM RUBBER SEAL**

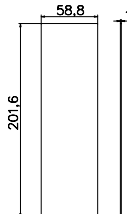
- RG-5F** Universal
- RG-5C** 6 + 6
- RG-5B** 8 + 8
- RG-5A** 10 + 10



**END COVER**

Anodized aluminium

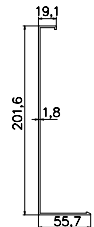
**Code: TV7601YK**



**SIDE COVER**

Anodized aluminium

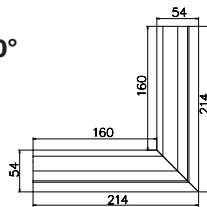
**Code: TV7601Y**



**TV7600Y Corner 90°  
(inside)**

Anodized aluminium.

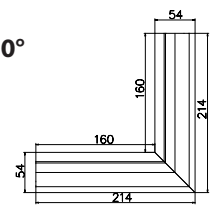
**Code: TC7601Y**



**TV7600Y Corner 90°  
(outside)**

Anodized aluminium.

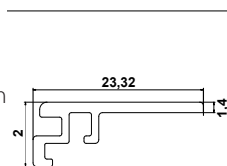
**Code: TC7602Y**



**TRIM**

Anodized aluminium

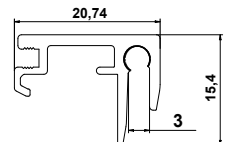
**Code: TV7600I**



**TRIM**

Anodized aluminium

**Code: TV7600X3**



**WEDGE INSERTER**

Wedge inserter

**Code: TVM5**



**WEDGE REMOVER**

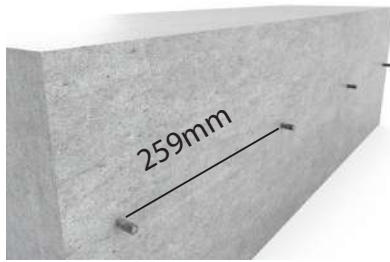
Wedge remover

**Code: TV30**



**CONNECTOR PINS**

**Code: TV4**



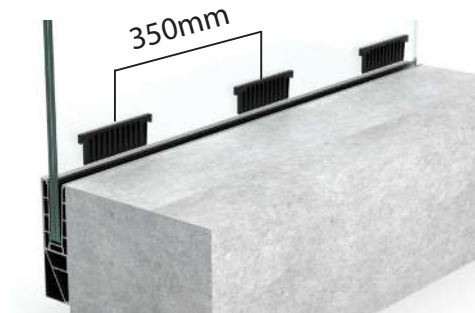
1. Drill, vacuum, insert glue and chemical anchor.



2. Place the profile and secure using a ratchet spanner.



3. Place back rubber seal, back plastic inserts and laminated glass.



4. Insert WedgeFix system and secure the glass as shown on bigger picture below.



5. Place front rubber seal with front and end covers.



6. Finished look.



Once all wedges are in place, use wedge inserter and a hammer to insert them until the glass is locked.

# TV7600L

BASE MOUNT



## KEY FEATURES



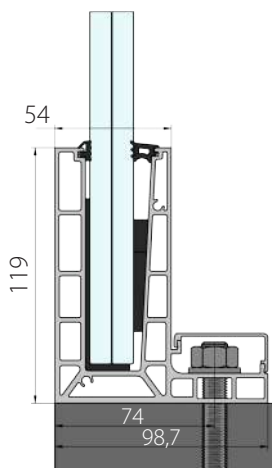
Up to 2 kN  
16.3-21,52 mm glass.  
Simplified installation.



Uses a wedge to secure  
the glass



5m channel, cover  
4 Anchors per meter



Length: 5000mm  
Height: 119mm  
Width: 98.7mm

Channel: 4.77 kg / meter  
Total: 5.58 / meter

Aluminium: EN AW6060  
Color: Inox, Natural, Raw,  
Custom colour

Mounting anchors:  
M10 / Concrete screw  
M8 / Concrete screw

Glass thickness:  
6.6.2 / 6.6.4  
8.8.2 / 8.8.4  
10.10.2 / 10.10.4

Strength:  
8.8 – up to 2 kN  
10.10 – up to 3 kN

Maximum Height:  
8.8 – up to 1100 mm  
10.10 – up to 1200 mm





**TV7600L** is our newest in-house designed glass railing system for base or underfloor mount with L-shape, designed to be mounted closer to the concrete edge than regular TV7600. This budget-oriented system provides a sleek finish, ease of installation, and requires minimum maintenance. The glass is secured in seconds using wedges and a wedge inserter. The wedges and profile design are ridged to remove the possibility of loose wedges which is a common problem with this type of design. You can rest assured that even after heavy use the system will keep its integrity.

Durability is a high priority for us and for our customers, this is why we made the internal parts from special plastic with UV protection. The rubber seals made from EPDM are perfectly suited for exposure to the sun thanks to their UV protection.

With our experience in the field, we know the technical challenges that can arise and so we designed the system with extra care. **TV7600L** successfully covers all residential and domestic applications. With certification for up to 2kN.

Compatible with:

**WedgeFix L**  
Technology



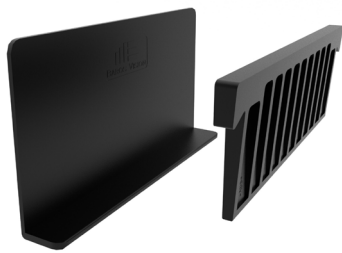
Full certification available on our website  
[www.tayskvision.com/en/](http://www.tayskvision.com/en/)

ASSEMBLED / DISASSEMBLED



To produce the TV7600L we use the highest quality series of aluminium EN AW 6063, it is well known for its extreme strength and elastic resistance designed to work with 12.76-21.52mm glass.

 **Components**



**WedgeFix L**

Plastic inserts  
Front and back

- WFL12** 6+6
- WFL16** 8+8
- WFL20** 10+10



**EPDM RUBBER SEAL**

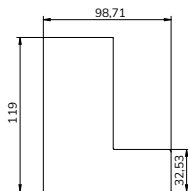
- RG-5F** Universal
- RG-5C** 8 + 8
- RG-5B** 10 + 10
- RG-5A** 12 + 12



**END COVER**

Anodized aluminium

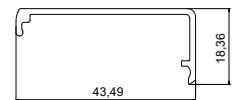
**Code: TV7600K**



**SIDE COVER**

Anodized aluminium

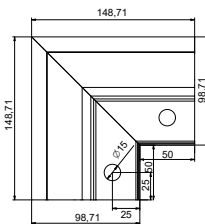
**Code: TV7601**



**TV7600 Corner 90°**

Anodized aluminium.

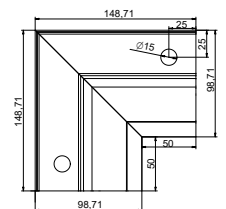
**Code: TC7601**



**TV7600 Corner 90°**

Anodized aluminium.

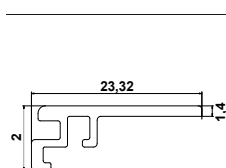
**Code: TC7602**



**TRIM**

Anodized aluminium

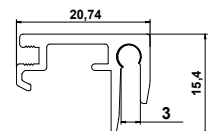
**Code: TV7600I**



**TRIM**

Anodized aluminium

**Code: TV7600X3**



**WEDGE INSERTER**

Wedge inserter

**Code: TV20**



**WEDGE REMOVER**

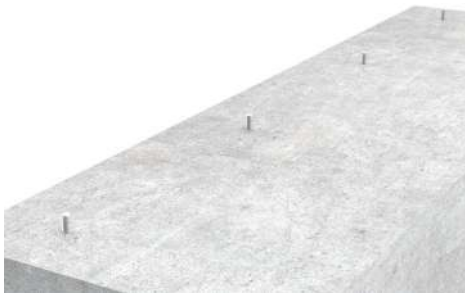
Wedge remover

**Code: TV30**

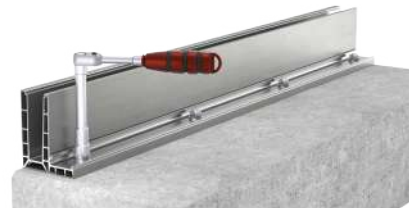


**CONNECTOR PINS**

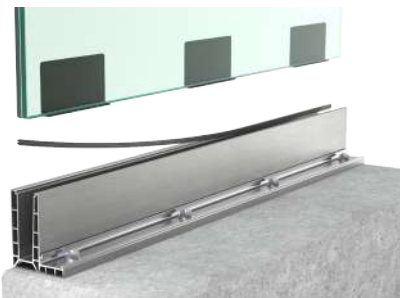
**Code: TV4**



1. Drill, vacuum, insert glue and chemical anchor.



2. Place the profile and secure using a ratchet spanner.



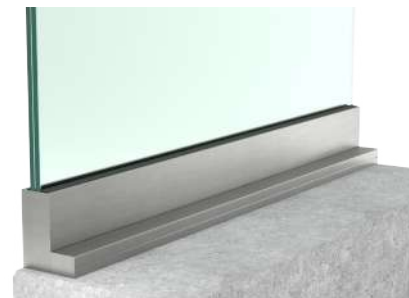
3. Place back rubber seal back plastic insert and laminated glass.



4. Insert WedgeFix system and secure the glass as shown on bigger picture below.



5. Place front and end covers



6. Finished look.



Once all wedges are in place, use wedge inserter and a hammer to insert them until the glass is locked.

TV 4500







# TV 6500

BASE MOUNT



## KEY FEATURES



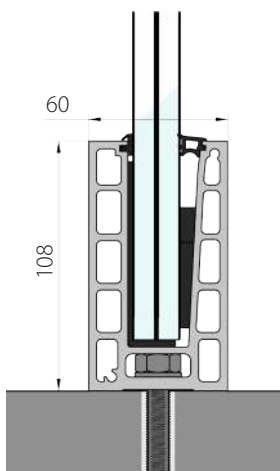
Up to 3 kN  
12.76-21,52 mm glass.  
Simplified installation.



Uses a wedge  
to secure the glass.  
Top and underfloor mount.



5m channel  
4 anchors per meter



Length: 5000mm  
Height: 108mm  
Width: 60mm

Channel: 5.57 kg / meter  
Total: 6.07 kg / meter

Aluminium: EN AW6063  
Color: Inox, Natural, Raw,  
Custom colour

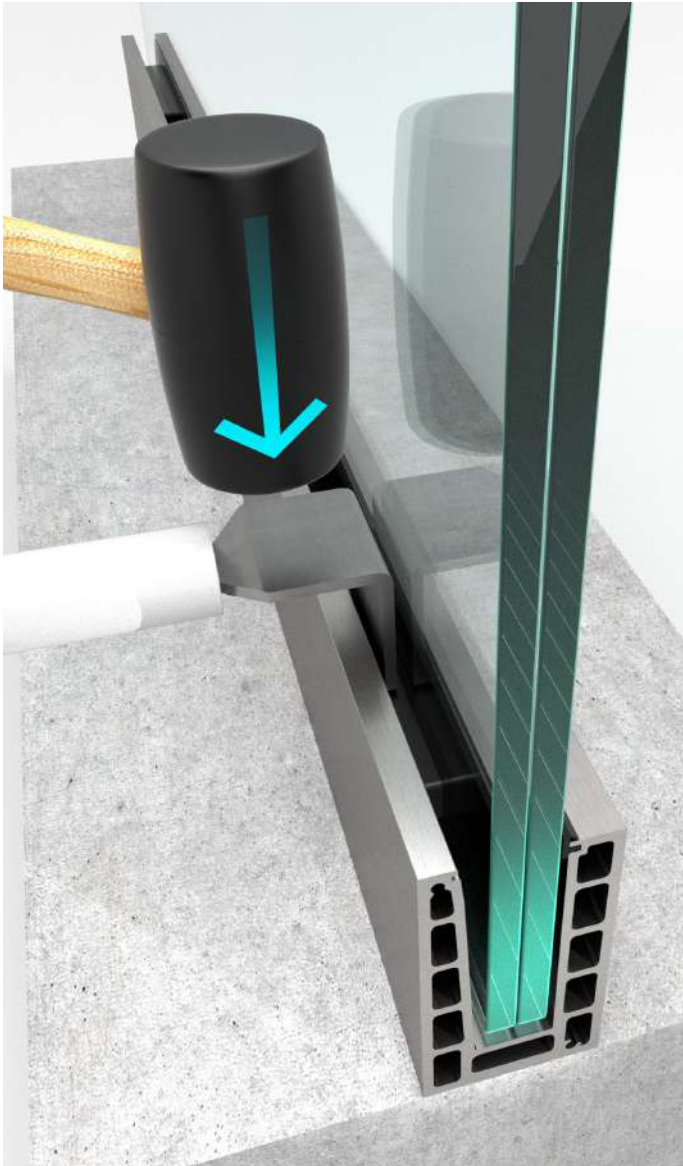
Mounting anchors:  
M10 / Concrete screw

Glass thickness:  
6.6.2 / 6.6.4  
8.8.2 / 8.8.4  
10.10.2 / 10.10.4

Strength:  
8.8 – up to 3 kN  
10.10 – up to 3 kN

Maximum Height:  
8.8 – up to 1200 mm  
10.10 – up to 1200 mm





**TV6500** is our heavy-duty budget-oriented glass railing system that offers industrial strength. Our team of in-house engineers designed the profile so it would provide easy and fast installation, with minimum maintenance required. The glass panels are secured in seconds using wedges and a wedge inserter.

Same as all of our glass railing systems the risk of breaking the glass during installation is reduced to a minimum. The **TV6500** profile and its wedges are ridged as that removes the possibility of loose wedges which is a common problem with this type of design. We can guarantee that profile will retain its integrity even after heavy use when it is mounted in places with large human traffic.

Strength and durability are priorities for every glass railing. This is the reason why the internal parts are manufactured using special plastic with added UV protection and the rubber seals are made of EPDM with excellent UV protection. Glass railing system **TV6500** can be used in every meteorological condition. Every part of this glass railing system is made in such a way that it ensures an easy and problem-free installation.

Compatible with:

**WedgeFix L**  
Technology



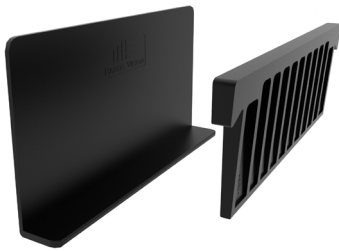
Full certification available on our website  
[www.tayskvision.com/en/](http://www.tayskvision.com/en/)

ASSEMBLED / DISASSEMBLED



To produce the TV6500 we use the highest quality series of aluminium EN AW 6063, it is well known for its extreme strength and elastic resistance designed to work with 12.76-21.52mm glass.

 **Components**



**WedgeFix L**

Plastic inserts  
Front and back

- WFL12** 6 + 6
- WFL16** 8 + 8
- WFL20** 10 + 10



**EPDM RUBBER SEAL**

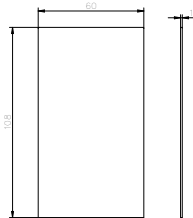
- RG-5F** Universal
- RG-5C** 6 + 6
- RG-5B** 8 + 8
- RG-5A** 10 + 10



**END COVER**

Anodized aluminium

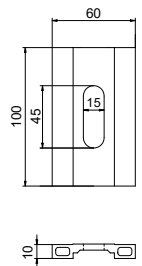
**Code: TV6501K**



**DRAINAGE PLATE**

Anodized aluminium

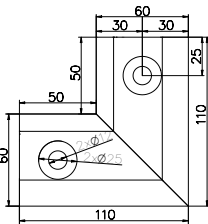
**Code: TV6500DP**



**TV6500 Corner 90° (inside)**

Anodized aluminium.

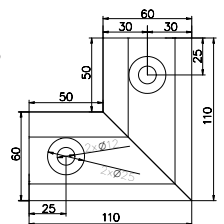
**Code: TC6501**



**TV6500 Corner 90° (outside)**

Anodized aluminium.

**Code: TC6502**



**WEDGE INSERTER**

Wedge inserter

**Code: TV20**



**WEDGE REMOVER**

Wedge remover

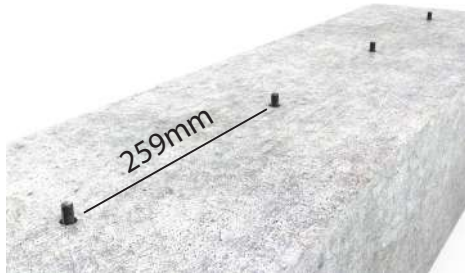
**Code: TV30**



**CONNECTOR PINS**

**Code: TV4**

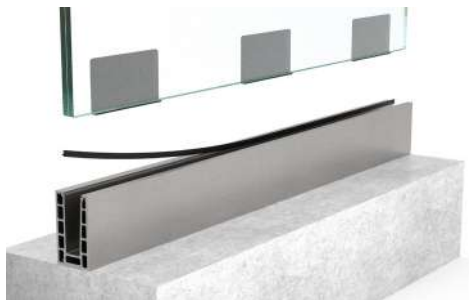




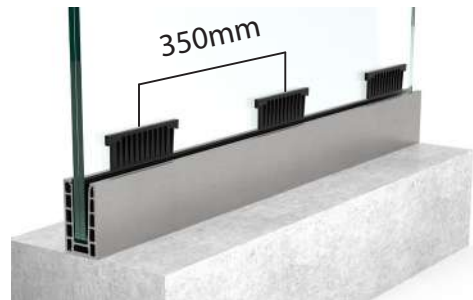
1. Drill, vacuum, insert glue and chemical anchor.



2. Place the profile and secure using a ratchet spanner.



3. Place back rubber seal, back plastic insert and laminated glass.



4. Insert WedgeFix system and secure the glass as shown on bigger picture below.



5. Place front rubber seal with front and end covers.



6. Finished look.



Once all wedges are in place, use wedge inserter and a hammer to insert them until the glass is locked.

# TV 6500L

BASE MOUNT



## KEY FEATURES



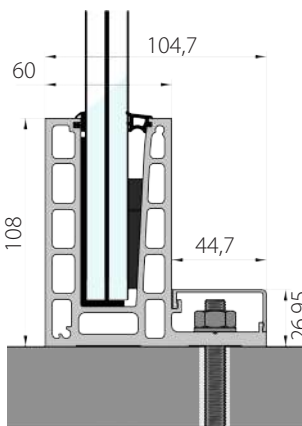
Continuous profile  
12.76 - 21.52mm glass  
Simplified installation.



Uses a wedge  
to secure the glass.  
Top and underfloor mount.



5m channel cover 6501  
4/8 anchors per meter



Length: 5000mm  
Height: 108mm  
Width: 104,7mm

Channel: 6.46 kg / meter  
Total: 7.4 kg / meter

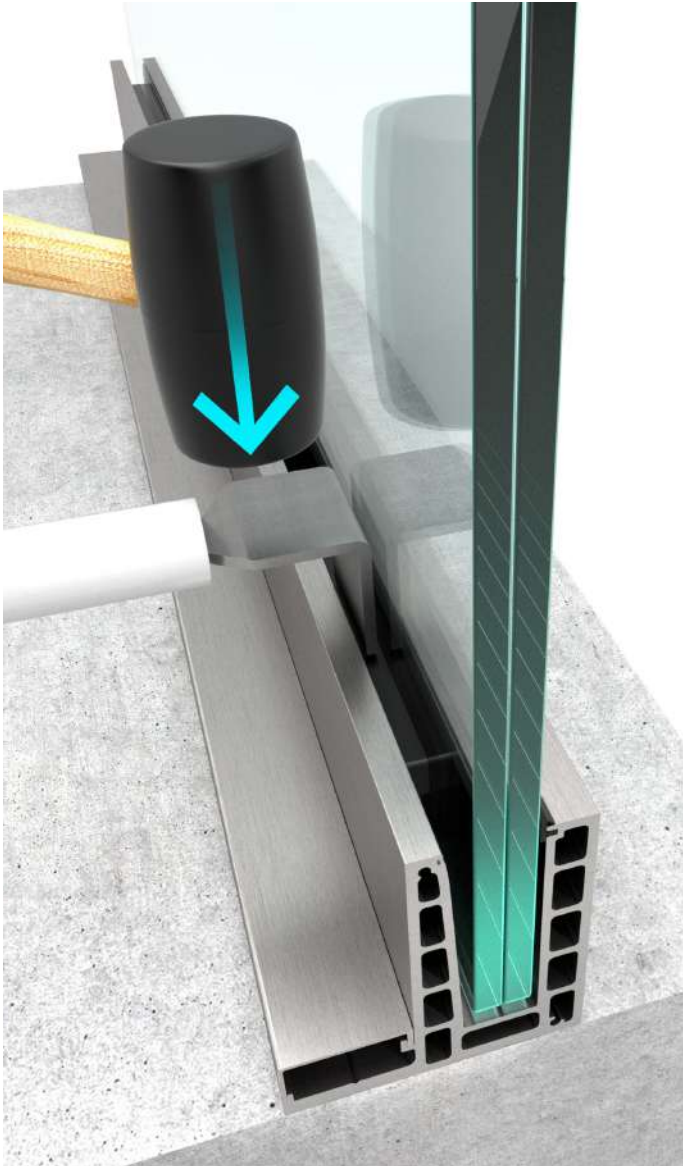
Aluminium: EN AW6063  
Color: Inox, Natural, Raw,  
Custom colour

Mounting anchors:  
M10 / Concrete screw

Glass thickness:  
6.62 / 6.64  
8.82 / 8.84  
10.10.2 / 10.10.4

Strength:  
8.8 – up to 3 kN  
10.10 – up to 3 kN

Maximum Height:  
8.8 – up to 1200 mm  
10.10 – up to 1200 mm



**TV6500L** is our L-shaped system that can be used as a glass canopy or glass railing. Specially designed by our engineers, this railing system has industrial strength, offers easy installation, and requires very little maintenance after it is mounted. The glass panels are secured in seconds using wedges and a wedge inserter.

Due to its unique L-shape and careful choice of materials, we have minimized the chance of breakage of the glass panel upon installation. The profile is fixed to the facade/wall, without the risk of breaking the concrete. The wedges and profile are ribbed, as this helps eliminate the possibility of loose wedges, something that can be a drawback in this type of design. You can rest assured that even after heavy use the system will keep its integrity.

Durability is the main priority for us as well as for our clients. This is the reason why the internal parts are manufactured using special plastic with added UV protection and the rubber seals are made of EPDM with excellent UV protection. The glass railing system **TV6500L** can be used for every meteorological condition. Every part of this glass balustrade has been planned to ease the installation and the associated risk factors.

Compatible with:

**WedgeFix L**  
Technology



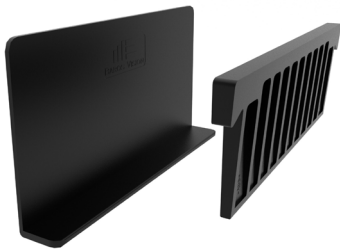
Full certification available on our website  
[www.tayskvision.com/en/](http://www.tayskvision.com/en/)

ASSEMBLED / DISASSEMBLED



To produce the TV6500L we use the highest quality series of aluminium EN AW 6063, it is well known for its extreme strength and elastic resistance designed to work with 12.76-21.52mm glass.

 **Components**



**WedgeFix L**

Plastic inserts  
Front and back

- WFL12** 6 + 6
- WFL16** 8 + 8
- WFL20** 10 + 10



**EPDM RUBBER SEAL**

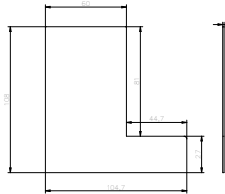
- RG-5F** Universal
- RG-5C** 6 + 6
- RG-5B** 8 + 8
- RG-5A** 10 + 10



**END COVER**

Anodized aluminium

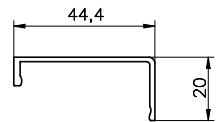
**Code: TV6501LK**



**SIDE COVER**

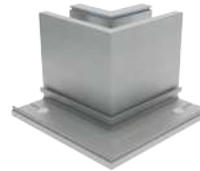
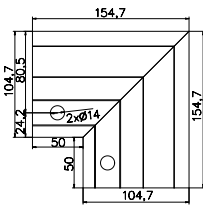
Anodized aluminium

**Code: TV6501L**



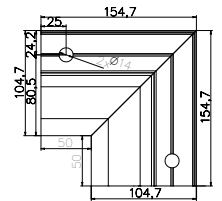
**TV6500L Corner 90°**

Anodized aluminium.  
**Code: TC6501L**



**TV6500 Corner 90°**

Anodized aluminium.  
**Code: TC6502L**



**WEDGE INSERTER**

Wedge inserter

**Code: TV20**



**WEDGE REMOVER**

Wedge remover

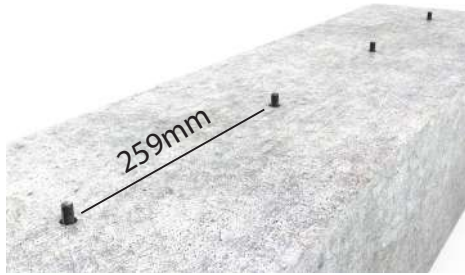
**Code: TV30**



**CONNECTOR PINS**

**Code: TV4**





1. Drill, vacuum, insert glue and chemical anchor.



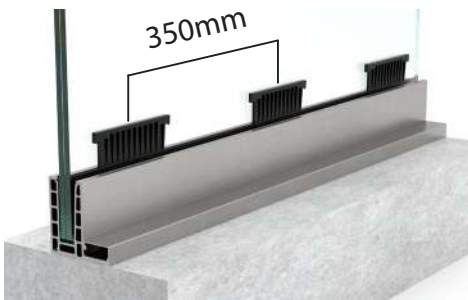
2. Place the profile and secure using a ratchet spanner.



3. Place out-facing lid.



4. Place back rubber seal, back plastic inserts and laminated glass.



5. Insert WedgeFix system and secure the glass as shown on bigger picture below.



6. Finished look.



Once all wedges are in place, use wedge inserter and a hammer to insert them until the glass is locked.

# BULGARIA

## WAVE RESORT

This Ultra All inclusive hotel situated in Aheloy has won the award Building of the year for Innovative design. Clear glass.

**BUILDING OF  
THE YEAR**

AWARD 2020

TV 4500





# TV 4500

BASE MOUNT



## KEY FEATURES



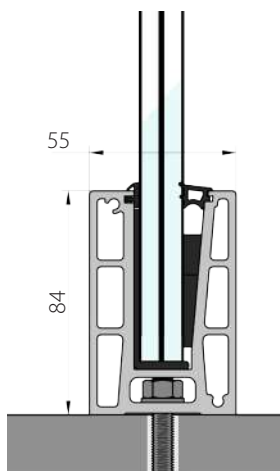
Continuous profile  
10.76-17.52mm glass,  
Simplified installation.



Uses a wedge to secure  
the glass



5+m channel  
4 anchors per meter



Length: 5000mm  
Height: 84mm  
Width: 55mm

Channel: 4.26 kg / meter  
Total: 4.76 kg / meter

Aluminium: EN AW6063  
Color: Inox, Natural, Raw,  
Custom colour

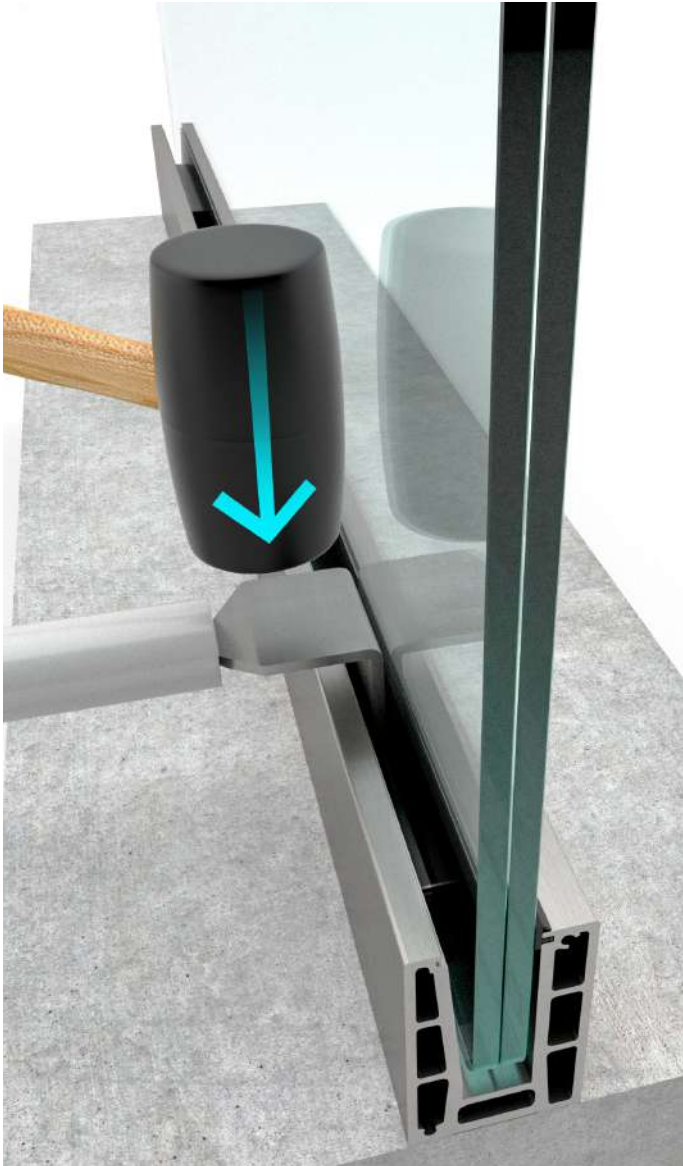
Mounting anchors:  
M8 Concrete screw

Glass thickness:  
5.5.2 / 5.5.4  
6.6.2 / 6.6.4  
8.8.2 / 8.8.4

Strength:  
6.6 – up to 1 kN  
8.8 – up to 2 kN

Maximum height:  
6.6 – up to 800 mm  
8.8 – up to 1100 mm





**TV4500** is our compact but extremely sturdy glass railing system. At a height of just 80mm this technical marvel of a system provides ease of installation, great strength, and requires minimum maintenance. The glass is secured in seconds using wedges and a wedge inserter. As with every glass railing system that we offer, the main factors here are strength and durability.

For the manufacturing of the internal parts of **TV4500**, we have used special plastic and rubber seals from EPDM. The design of the parts makes the system suitable for exposure to the sun thanks to its UV protection. **TV4500** can be used for all meteorological conditions. Thanks to our experience in the field we have designed the system in such a way that the installation is easy and all the technical obstacles that could arise during the process are eliminated.

**TV4500** successfully covers all residential and domestic applications while being small and barely noticeable. This system is certified at 2kN.

Compatible with:

**WedgeFix L**  
Technology



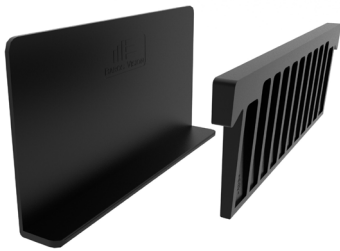
Full certification available on our website  
[www.tayskvision.com/en/](http://www.tayskvision.com/en/)

ASSEMBLED / DISASSEMBLED



To produce the TV4500 we use the highest quality series of aluminium EN AW 6063, it is well known for its extreme strength and elastic resistance designed to work with 10.76-17.52mm glass.

 **Components**



**WedgeFix S**

Plastic inserts  
Front and back

- WFL12** 5 + 5
- WFL16** 6 + 6
- WFL20** 8 + 8



**EPDM RUBBER SEAL**

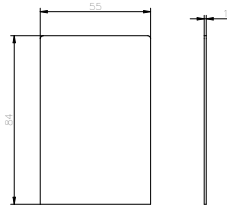
- RG-5F** Universal
- RG-5C** 5 + 5
- RG-5B** 6 + 6
- RG-5A** 8 + 8



**END COVER**

Anodized aluminium

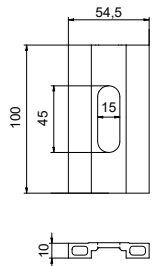
**Code: TV4501K**



**DRAINAGE PLATE**

Anodized aluminium

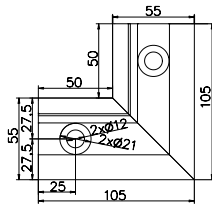
**Code: TV4500DP**



**TV4500 Corner 90°**

Anodized aluminium.

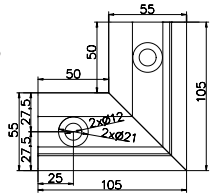
**Code: TC4501**



**TV4500 Corner 90°**

Anodized aluminium.

**Code: TC4502**



**WEDGE INSERTER**

Wedge inserter

**Code: TV20**



**WEDGE REMOVER**

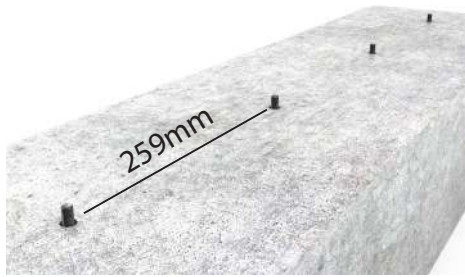
Wedge remover

**Code: TV30**



**CONNECTOR PINS**

**Code: TV4**



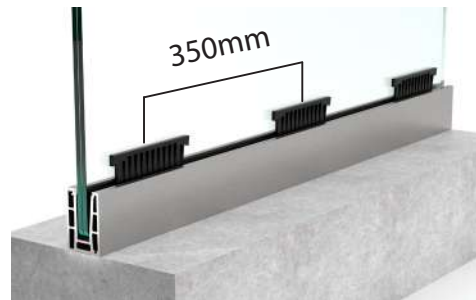
1. Drill, vacuum, insert glue and chemical anchor.



2. Place the profile and secure using a ratchet spanner.



3. Place back rubber seal, back plastic inserts and laminated glass.



4. Insert WedgeFix system and secure the glass as shown on bigger picture below.



5. Place front and end covers



6. Finished look.



Once all wedges are in place, use wedge inserter and a hammer to insert them until the glass is locked.



TV 3500RS





# TV 3500

SIDE MOUNT



## KEY FEATURES



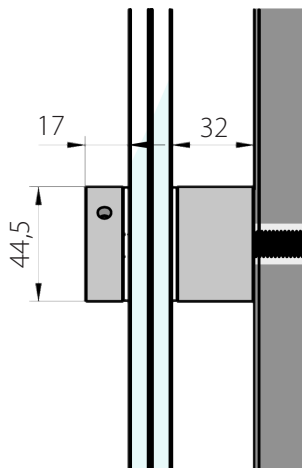
Solid stainless steel 304  
12-30mm glass



Handmade.



4-6 standoffs  
per meter



Width: 44,5mm  
Top part: 15mm

Base size: 30mm

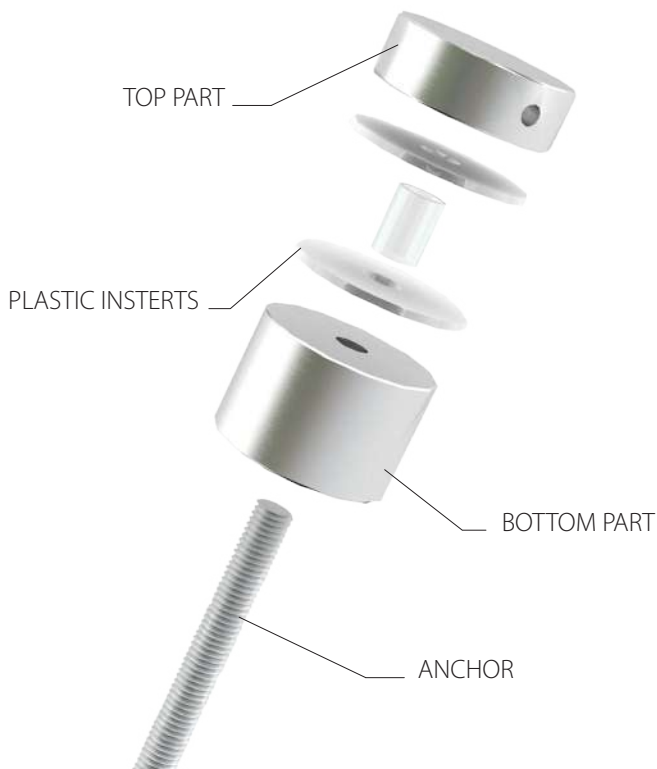
Material:Stainless steel  
304  
Surface:Matte

Weight: 624gr each

Glass thickness:  
6.6.2 / 6.6.4  
8.8.2 / 8.8.4

Strength:  
6.6 – up to 1 kN  
8.8 – up to 2 kN

Maximum Height:  
6.6 – up to 1100 mm  
8.8 – up to 1150 mm



TV3500 is our fixed glass adapter. Produced from solid 304 stainless steel it provides unrivaled strength great corrosion resistance and a clean design. This system comes with included spacer from 304SS.

TV3500 can hold triplex glass with a width of 12-30mm. The height of the glass can be from 1100 to 1400mm depending on the type of handrail used. The exceptional corrosion resistance makes this system a practical choice for different environments. For superior corrosion resistance the adapters can be made of 316 stainless steel upon request. The system can be finished with a decorative aluminium slimline handrail (TV6023) for limitless look or with a standard square (TV6024) or round handrails (TV6022).

TV3500 is an excellent choice for modern-looking Juliet balconies, staircases, and glass railings.

**/ INSTALATION GUIDE**



Full certification available on our website [www.tayskvision.com/en/](http://www.tayskvision.com/en/)



1. Drill, vacuum, insert glue and chemical anchor.



2. Place the base and the plastic protectors.



3. Place the glass.



4. Secure top of standoffs.

# TV3500RS

BASE MOUNT



## KEY FEATURES



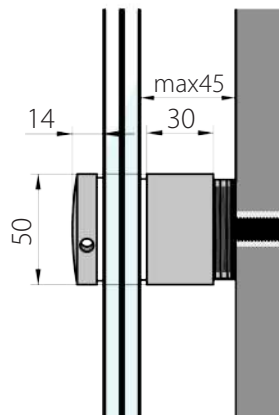
Solid stainless steel 304  
12-30mm glass



Handmade.



4-6 standoffs  
per meter



Width: 50mm  
Top part: 11mm

Base size: 30mm

Material: Stainless steel  
316

Finish: Brush

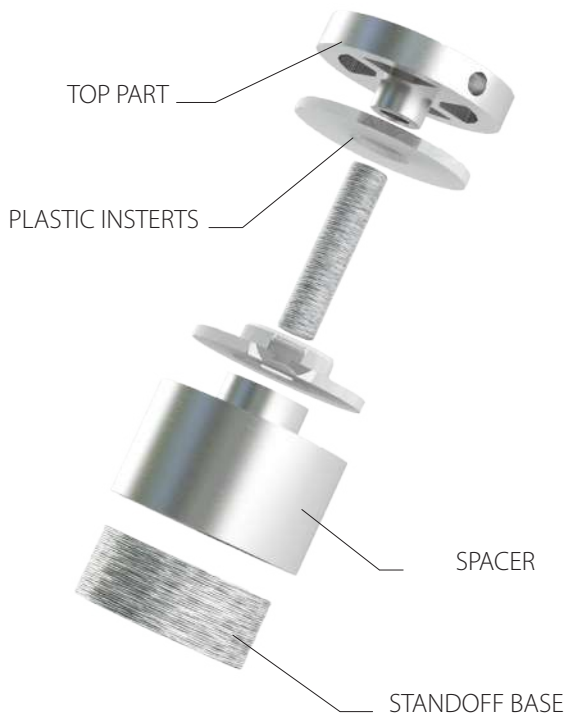
Weight: 409gr each

Glass thickness:  
6.6.2 / 6.6.4  
8.8.2 / 8.8.4

Strength:  
6.6 – up to 1 kN  
8.8 – up to 2 kN

Maximum Height:  
6.6 – up to 1100 mm  
8.8 – up to 1150 mm





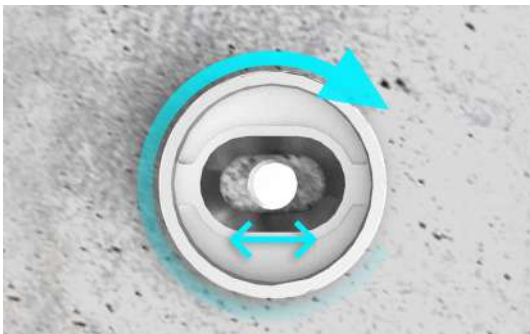
**TV3500RS** is our regulated glass adapter. Manufactured from 316 stainless steel, it makes the installation easy. The regulated adapter allows precise glass fixation with its 2-axis regulation. Left/Right, Up/Down, and Forward/Backward, a possibility to adjust in every direction. The 316 stainless steel is well known for its superior corrosion resistance and durability.

**TV3500RS** can be used on french balconies, staircases, and glass railings. It can support glass with thicknesses from 12 to 24mm.

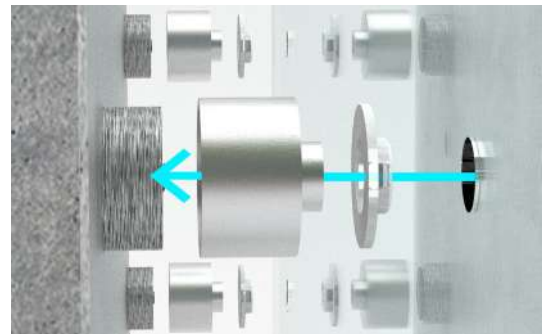
**/ INSTALATION GUIDE**



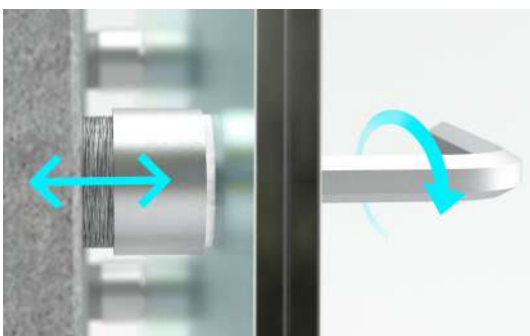
Full certification available on our website [www.tayskvision.com/en/](http://www.tayskvision.com/en/)



1. You can adjust standoff position.



2. Screw the spacer and add the plastic protectors. Place the glass.



3. You can move backwards or forwards to regulate the glass.



4. Once everything is in place screw on top part of the standoff. Finished look.

## TV 2500

BASE MOUNT



### KEY FEATURES



Solid stainless steel 304  
12-30mm glass



Precise alignment from the  
inside of the profile. Side  
mount



**HANDMADE**  
stainless steel parts

Height: 317,5mm  
Width: 50mm

Base size: 80mm

Material: SS304  
Surface: Matte

Weight: 2,7kg / each

Glass thickness:  
6.6.2 / 6.6.4  
8.8.2 / 8.8.4

Strength:  
6.6 – up to 1 kN  
8.8 – up to 2 kN

Maximum Height:  
6.6 – up to 1100 mm  
8.8 – up to 1150 mm



**TV2500** is our handmade stainless steel post for glass railings made of 304 stainless steel. Designed by our team of installers and manufactured by hand in our factory. We also offer a side-mounted variant.

**TV2500** is installed with chemical or mechanical anchors and it can hold a glass of 12mm-25.52mm. It provides the flexibility of installation as it can be used on balconies, stairs, and even for awnings and canopies as it is extremely durable. Securing the glass is achieved with custom-made standoffs / glass adapters. The exceptional corrosion resistance makes this system a practical choice for different environments. For superior corrosion resistance the adapters can be made of 316 stainless steel upon request. The system can be finished with a decorative aluminium slimline handrail (TV6023) for limitless look or with a standard square (TV6024) or round handrails (TV6022).

TV2500 is a good choice for staircases, glass railings, and balustrades.

**/ INSTALATION GUIDE**



Full certification available on our website [www.tayskvision.com/en/](http://www.tayskvision.com/en/)



1. Drill, vacuum, insert glue and chemical anchor.



2. Mount and secure the columns.



3. Place plastic protectors and insert the glass



4. Secure the glass with the top part of the standoffs.



# TV2500SM

SIDE MOUNT



## KEY FEATURES



Solid stainless steel 304  
12-30mm glass



Precise alignment from the  
inside of the profile. Side  
mount



5m channel, cover 9901S  
4 Anchors per meter

Height: 543mm  
Base size: 80mm

Width: 50mm  
Material: SS304 / SS316

Surface: Matte  
Handmade

Weight: 3,7 kg each

### Glass thickness:

6.6.2 / 6.6.4  
8.8.2 / 8.8.4

### Strength:

6.6 – up to 1 kN  
8.8 – up to 2 kN

### Maximum Height:

6.6 – up to 1100 mm  
8.8 – up to 1150 mm



TV2500SM is our handmade post from stainless steel 304, designed for side mount. It provides the flexibility of installation as it can be used on balconies, stairs, canopies, and awnings.

Securing the glass is achieved with custom-made standoffs / glass adapters. TV2500SM can also be made from 316 stainless steel upon request, thus further increasing the corrosion resistance. The side mount which TV2500SM offers means that you will have more space available as usually glass railing columns that use top mount take part of the space of the staircase or balcony. The system can be finished with a decorative aluminium slimline handrail (TV6023) for limitless look or with a standard square (TV6024) or round handrails (TV6022).

**/ INSTALATION GUIDE**



Full certification available on our website [www.tayskvision.com/en/](http://www.tayskvision.com/en/)



1. Drill, vacuum, insert glue and chemical anchor.



2. Mount and secure the columns.



3. Place plastic protector and insert the glass.



4. Secure the glass with the top part of the standoffs.



## Handrails & Accessories

# TV6024

SQUARE HANDRAIL



TV 6024 – is our square aluminium handrail with a rubber seal inside. It can be used on glass with a thickness of 10 to 20 mm.



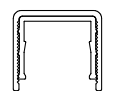
WX 6024/10



WX 6024/12



WX 6024/16



WX 6024/20

Available finish options :



## Accessories



TV 6024B/90



TV 6024B/135



TV 6024F



TV 6024S



TV 6024K

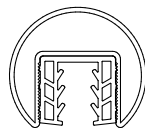


# TV6022

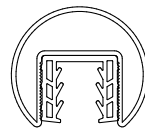
ROUND HANDRAIL



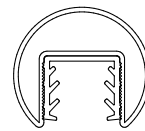
TV 6022 – is our round aluminium handrail with a rubber seal inside. It can be used on glass with a thickness of 10 to 20 mm.



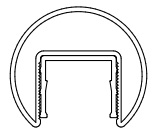
TV 6022/ 10



TV 6022/ 12



TV 6022/ 16



TV 6022/ 20

Available finish options :



## Accessories



TV 6022B/90



TV 6022B/135



TV 6022F



TV 6022S



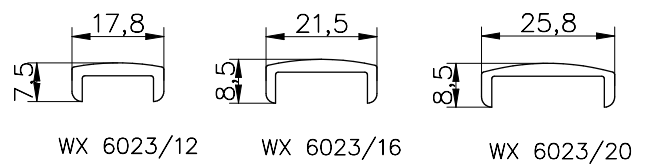
TV 6022K

# TV6023

SLIM HANDRAIL



TV 6023 – is our decorative aluminium handrail with slimline and no rubber seal. It can be used on glass with a thickness of 12 to 20 mm.



Available finish options :



## Accessories



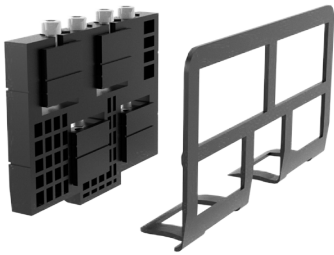
TV 6023B/90



TV 6023B/135



TV 6023F



**InstAlign+**

Adjustable kits for glass alignment

- K99-16** 8+8
- K99-20** 10+10
- K99-24** 12+12



**EPDM RUBBER SEAL**

- RG-0090F** Universal
- RG-0091** 8 + 8
- RG-0092** 10 + 10
- RG-0093** 12 + 12



**END COVER**

Anodised aluminium

**Code:** TV9900K



**DRAINAGE PLATE**

Anodised aluminium

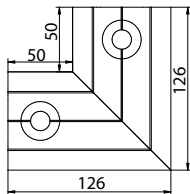
**Code:** TV9900DP



**TV9900 Corner 90°**

Anodised aluminium.

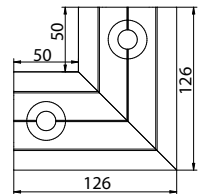
**Code:** TC9900



**TV9900 Corner 90°**

Anodised aluminium.

**Code:** TC9900



**TRIM**

Anodised aluminium

**Code:** TV9900I



**TRIM**

Anodised aluminium

**Code:** TV9900X3



**SCREW DRIVER BIT**

M5 hexagon ball end  
150mm bit

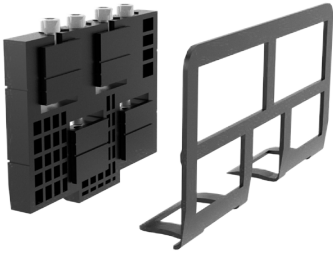
**Code:** TVM5



**CONNECTOR PINS**

**Code:** TV4

 **Components**



**InstAlign+**  
Adjustable kits for  
glass alignment  
**K99-16** 8+8  
**K99-20** 10+10  
**K99-24** 12+12



**EPDM RUBBER SEAL**  
**RG-0090F** Universal  
**RG-0091** 8 + 8  
**RG-0092** 10 + 10  
**RG-0093** 12 + 12



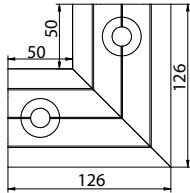
**END COVER**  
Anodised aluminium  
**Code: TV9900K**



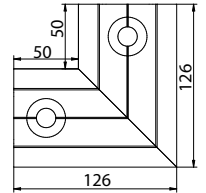
**DRAINAGE PLATE**  
Anodised aluminium  
**Code: TV9900DP**



**TV9900 Corner 90°**  
Anodised aluminium.  
**Code: TC9900**



**TV9900 Corner 90°**  
Anodised aluminium.  
**Code: TC9900**







Date:

## NOTES

---

